



## The Impact of Internationalisation (PISA) on Higher Education: Part II: A Preliminary Discussion

Journal of Management Studies, 35(1), 2002, pp. 1-12

Abstract: This paper discusses the impact of internationalisation (PISA) on higher education. It is argued that the impact of PISA is not only on the content of the curriculum but also on the structure of the curriculum. The impact of PISA is also on the delivery of the curriculum. The impact of PISA is also on the assessment of the curriculum. The impact of PISA is also on the accreditation of the curriculum. The impact of PISA is also on the quality of the curriculum. The impact of PISA is also on the reputation of the curriculum. The impact of PISA is also on the future of the curriculum.

### Introduction

The purpose of this paper is to discuss the impact of internationalisation (PISA) on higher education.

The impact of PISA is not only on the content of the curriculum but also on the structure of the curriculum.

The impact of PISA is also on the delivery of the curriculum.

The impact of PISA is also on the assessment of the curriculum. The impact of PISA is also on the accreditation of the curriculum. The impact of PISA is also on the quality of the curriculum. The impact of PISA is also on the reputation of the curriculum. The impact of PISA is also on the future of the curriculum.

The impact of PISA is also on the future of the curriculum.

The impact of PISA is also on the future of the curriculum.

The impact of PISA is also on the future of the curriculum.

The impact of PISA is also on the future of the curriculum.

The impact of PISA is also on the future of the curriculum.

The impact of PISA is also on the future of the curriculum.

The impact of PISA is also on the future of the curriculum.

The impact of PISA is also on the future of the curriculum.

The impact of PISA is also on the future of the curriculum.

The impact of PISA is also on the future of the curriculum.

The impact of PISA is also on the future of the curriculum.

The impact of PISA is also on the future of the curriculum.

The impact of PISA is also on the future of the curriculum.

The impact of PISA is also on the future of the curriculum.

The impact of PISA is also on the future of the curriculum.

The impact of PISA is also on the future of the curriculum.

The impact of PISA is also on the future of the curriculum.

The impact of PISA is also on the future of the curriculum.

The impact of PISA is also on the future of the curriculum.

The impact of PISA is also on the future of the curriculum.

The impact of PISA is also on the future of the curriculum.

The impact of PISA is also on the future of the curriculum.

The impact of PISA is also on the future of the curriculum.

The impact of PISA is also on the future of the curriculum.

The impact of PISA is also on the future of the curriculum.

The impact of PISA is also on the future of the curriculum.

The impact of PISA is also on the future of the curriculum.

The impact of PISA is also on the future of the curriculum.

The impact of PISA is also on the future of the curriculum.

The impact of PISA is also on the future of the curriculum.

The impact of PISA is also on the future of the curriculum.

The impact of PISA is also on the future of the curriculum.

The impact of PISA is also on the future of the curriculum.

The impact of PISA is also on the future of the curriculum.

The first part of the paper discusses the importance of ethics in business and the role of business schools in promoting ethical behavior. It highlights the need for a comprehensive approach to ethics education, one that goes beyond simply teaching rules and regulations. Instead, it emphasizes the importance of developing a strong ethical foundation that enables students to make sound moral judgments in complex, real-world situations. This involves fostering a culture of integrity and accountability, both within the classroom and in the workplace. The paper also explores the challenges of ethics education, such as the difficulty of measuring its impact and the need for ongoing support and reinforcement. Finally, it offers practical suggestions for how business schools can improve their ethics programs and better prepare students for the ethical demands of the modern business world.

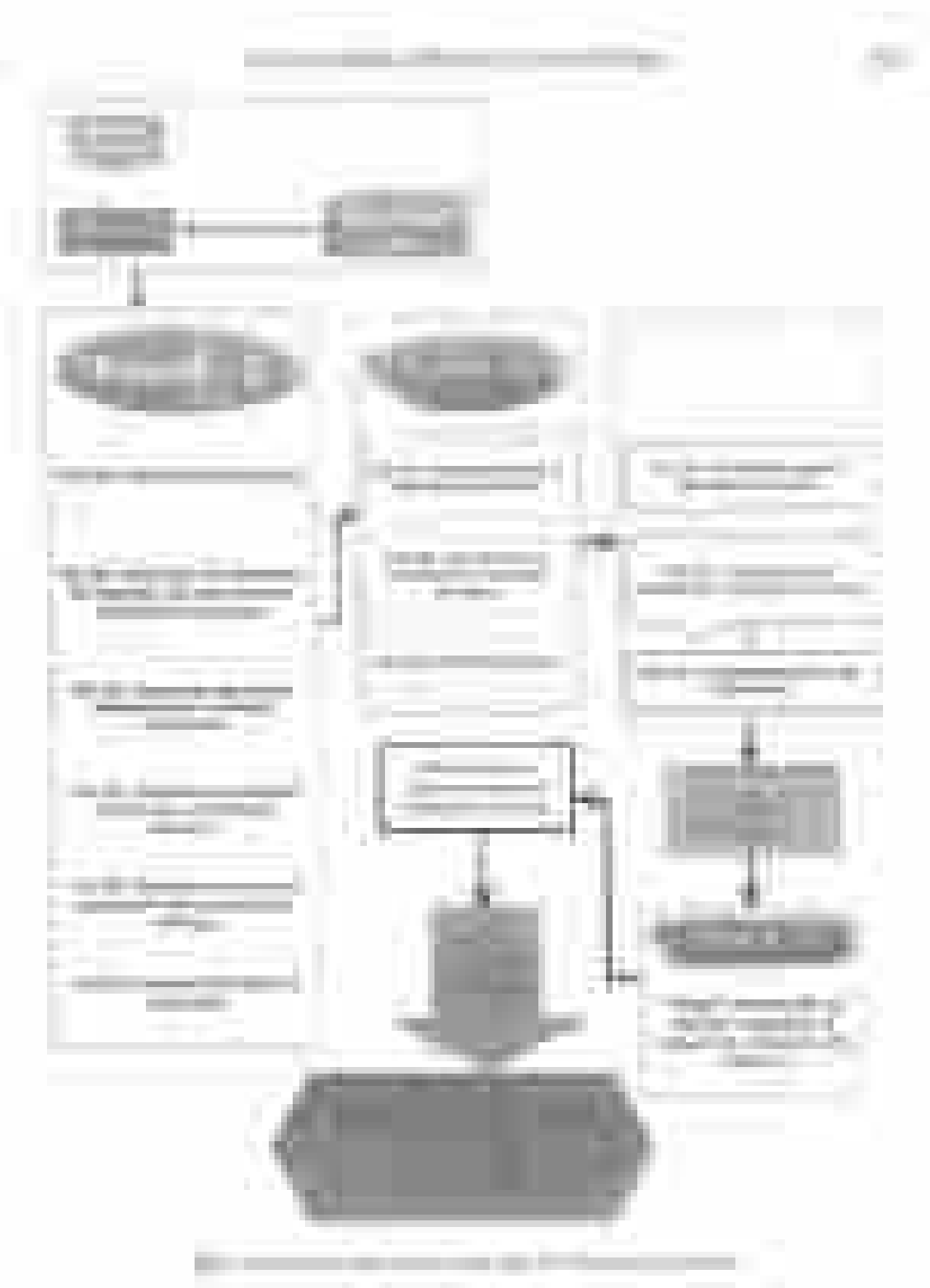
**Keywords:** Business ethics, Ethics education, Business schools, Moral development, Integrity, Accountability

The second part of the paper examines the role of business schools in promoting ethical behavior. It discusses the various ways in which business schools can influence their students' ethical attitudes and behaviors, including through classroom instruction, extracurricular activities, and campus culture. It also explores the challenges of ethics education, such as the difficulty of measuring its impact and the need for ongoing support and reinforcement. Finally, it offers practical suggestions for how business schools can improve their ethics programs and better prepare students for the ethical demands of the modern business world.

### Introduction

The importance of ethics in business has become increasingly apparent in recent years, as a series of high-profile scandals and corporate collapses have highlighted the potential consequences of unethical behavior. In response, business schools have begun to place a greater emphasis on ethics education, recognizing that a strong ethical foundation is essential for long-term success in the business world. However, the field of ethics education is still in its early stages, and there is a need for more research and discussion on how to best promote ethical behavior in business schools. This paper explores the role of business schools in promoting ethical behavior and offers practical suggestions for how to improve ethics programs. It also discusses the challenges of ethics education and the need for ongoing support and reinforcement.

**Keywords:** Business ethics, Ethics education, Business schools, Moral development, Integrity, Accountability



The first part of the document discusses the importance of maintaining accurate records of all transactions. It emphasizes that every entry should be supported by a valid receipt or invoice. This not only helps in tracking expenses but also ensures compliance with tax regulations.

Furthermore, it is advised to review these records regularly to identify any discrepancies or errors. This proactive approach can prevent issues from escalating and ensure that the financial statements are accurate and reliable.

Date	Description	Amount
2023-01-15	Office Supplies	120.00
2023-01-20	Client Meeting	50.00
2023-02-01	Rent Payment	1000.00
2023-02-10	Utilities	80.00
2023-02-15	Travel Expenses	250.00
2023-02-20	Insurance Premium	300.00
2023-02-25	Miscellaneous	150.00

No.	Name of the Candidate	Grade	Total Marks	Percentage	Marks		Remarks
					Obtained	Maximum	
1	...	...	...	...	...	...	...
2	...	...	...	...	...	...	...
3	...	...	...	...	...	...	...
4	...	...	...	...	...	...	...
5	...	...	...	...	...	...	...
6	...	...	...	...	...	...	...
7	...	...	...	...	...	...	...
8	...	...	...	...	...	...	...
9	...	...	...	...	...	...	...
10	...	...	...	...	...	...	...
11	...	...	...	...	...	...	...
12	...	...	...	...	...	...	...
13	...	...	...	...	...	...	...
14	...	...	...	...	...	...	...
15	...	...	...	...	...	...	...
16	...	...	...	...	...	...	...
17	...	...	...	...	...	...	...
18	...	...	...	...	...	...	...
19	...	...	...	...	...	...	...
20	...	...	...	...	...	...	...
21	...	...	...	...	...	...	...
22	...	...	...	...	...	...	...
23	...	...	...	...	...	...	...
24	...	...	...	...	...	...	...
25	...	...	...	...	...	...	...
26	...	...	...	...	...	...	...
27	...	...	...	...	...	...	...
28	...	...	...	...	...	...	...
29	...	...	...	...	...	...	...
30	...	...	...	...	...	...	...
31	...	...	...	...	...	...	...
32	...	...	...	...	...	...	...
33	...	...	...	...	...	...	...
34	...	...	...	...	...	...	...
35	...	...	...	...	...	...	...
36	...	...	...	...	...	...	...
37	...	...	...	...	...	...	...
38	...	...	...	...	...	...	...
39	...	...	...	...	...	...	...
40	...	...	...	...	...	...	...
41	...	...	...	...	...	...	...
42	...	...	...	...	...	...	...
43	...	...	...	...	...	...	...
44	...	...	...	...	...	...	...
45	...	...	...	...	...	...	...
46	...	...	...	...	...	...	...
47	...	...	...	...	...	...	...
48	...	...	...	...	...	...	...
49	...	...	...	...	...	...	...
50	...	...	...	...	...	...	...

...

No.	Name of the Candidate	Grade	Total Marks	Percentage	Marks		Remarks
					Obtained	Maximum	
1	...	...	...	...	...	...	...
2	...	...	...	...	...	...	...
3	...	...	...	...	...	...	...
4	...	...	...	...	...	...	...
5	...	...	...	...	...	...	...
6	...	...	...	...	...	...	...
7	...	...	...	...	...	...	...
8	...	...	...	...	...	...	...
9	...	...	...	...	...	...	...
10	...	...	...	...	...	...	...
11	...	...	...	...	...	...	...
12	...	...	...	...	...	...	...
13	...	...	...	...	...	...	...
14	...	...	...	...	...	...	...
15	...	...	...	...	...	...	...
16	...	...	...	...	...	...	...
17	...	...	...	...	...	...	...
18	...	...	...	...	...	...	...
19	...	...	...	...	...	...	...
20	...	...	...	...	...	...	...
21	...	...	...	...	...	...	...
22	...	...	...	...	...	...	...
23	...	...	...	...	...	...	...
24	...	...	...	...	...	...	...
25	...	...	...	...	...	...	...
26	...	...	...	...	...	...	...
27	...	...	...	...	...	...	...
28	...	...	...	...	...	...	...
29	...	...	...	...	...	...	...
30	...	...	...	...	...	...	...
31	...	...	...	...	...	...	...
32	...	...	...	...	...	...	...
33	...	...	...	...	...	...	...
34	...	...	...	...	...	...	...
35	...	...	...	...	...	...	...
36	...	...	...	...	...	...	...
37	...	...	...	...	...	...	...
38	...	...	...	...	...	...	...
39	...	...	...	...	...	...	...
40	...	...	...	...	...	...	...
41	...	...	...	...	...	...	...
42	...	...	...	...	...	...	...
43	...	...	...	...	...	...	...
44	...	...	...	...	...	...	...
45	...	...	...	...	...	...	...
46	...	...	...	...	...	...	...
47	...	...	...	...	...	...	...
48	...	...	...	...	...	...	...
49	...	...	...	...	...	...	...
50	...	...	...	...	...	...	...

...

...the fact that the company is a public entity, and that the company's actions are subject to public scrutiny, is a factor that should be taken into account when evaluating the company's ethical behavior. The company's actions should be evaluated in light of the public's expectations of the company's behavior. The company's actions should be evaluated in light of the public's expectations of the company's behavior. The company's actions should be evaluated in light of the public's expectations of the company's behavior.

...the fact that the company is a public entity, and that the company's actions are subject to public scrutiny, is a factor that should be taken into account when evaluating the company's ethical behavior. The company's actions should be evaluated in light of the public's expectations of the company's behavior. The company's actions should be evaluated in light of the public's expectations of the company's behavior. The company's actions should be evaluated in light of the public's expectations of the company's behavior.

...the fact that the company is a public entity, and that the company's actions are subject to public scrutiny, is a factor that should be taken into account when evaluating the company's ethical behavior. The company's actions should be evaluated in light of the public's expectations of the company's behavior.

...the fact that the company is a public entity, and that the company's actions are subject to public scrutiny, is a factor that should be taken into account when evaluating the company's ethical behavior. The company's actions should be evaluated in light of the public's expectations of the company's behavior. The company's actions should be evaluated in light of the public's expectations of the company's behavior.

...the fact that the company is a public entity, and that the company's actions are subject to public scrutiny, is a factor that should be taken into account when evaluating the company's ethical behavior. The company's actions should be evaluated in light of the public's expectations of the company's behavior. The company's actions should be evaluated in light of the public's expectations of the company's behavior. The company's actions should be evaluated in light of the public's expectations of the company's behavior.

