



BOARD OF TECHNICAL EDUCATION U.P.

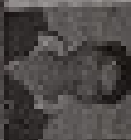
STATEMENT OF MARKS
FINAL YEAR - 2020

22030157

REGISTRATION NO. 13403
EXAMINATION NAME: (1st) Final Year Diploma Course in Technical Education (Part 1)
PROJECT NAME: (2) Final Year Project (Part 1)

(1st) Final Year Diploma Course in Technical Education (Part 1)
PROJECT NAME: (2) Final Year Project (Part 1)

REGISTRATION NO. ET148824105001



PAPER CODE		PAPER NAME		MARKS		PAPER CODE		PAPER NAME		MARKS	
.. THEORY PRACTICAL THEORY PRACTICAL THEORY PRACTICAL ..	
24101	INDUSTRIAL MANAGEMENT & PERSONNEL MANAGEMENT	24101	INDUSTRIAL MANAGEMENT & PERSONNEL MANAGEMENT	50	50	24101	INDUSTRIAL, OFFICE & SAFETY	50	50	24101	INDUSTRIAL, OFFICE & SAFETY
24102	ENGINEERING DRAWINGS	24102	ENGINEERING DRAWINGS	50	50	24102	MECHANICAL & ELECTRICAL INSTRUMENTS	50	50	24102	MECHANICAL & ELECTRICAL INSTRUMENTS
24103	REPAIRING TOOL, TECHNOLOGY & MAINTENANCE	24103	REPAIRING TOOL, TECHNOLOGY & MAINTENANCE	50	50	24103	AUTOMOBILE TECHNOLOGY	50	50	24103	AUTOMOBILE TECHNOLOGY
24104	DESIGN & ESTIMATION	24104	DESIGN & ESTIMATION	50	50	24104	AGRICULTURE, FORESTRY & ANIMAL HUSBANDRY	50	50	24104	AGRICULTURE, FORESTRY & ANIMAL HUSBANDRY
24105	AUTOMOBILE ENGINE	24105	AUTOMOBILE ENGINE	50	50	24105	PERSONNEL EDUCATION & QUALITY MANAGEMENT	50	50	24105	PERSONNEL EDUCATION & QUALITY MANAGEMENT
.. PRACTICAL ..											
24101	INDUSTRIAL MANAGEMENT & PERSONNEL MANAGEMENT	100	40	15	50	24101	INDUSTRIAL, OFFICE & SAFETY	100	40	15	50
24102	ENGINEERING DRAWINGS	40	14	20	50	24102	MECHANICAL & ELECTRICAL INSTRUMENTS	40	14	20	50
.. REPAIRING TOOL, TECHNOLOGY & MAINTENANCE ..											
24103	REPAIRING TOOL, TECHNOLOGY & MAINTENANCE	100	50	50	50	24103	AUTOMOBILE TECHNOLOGY	100	50	50	50
24104	DESIGN & ESTIMATION	50	19	31	50	24104	AGRICULTURE, FORESTRY & ANIMAL HUSBANDRY	50	19	31	50
24105	AUTOMOBILE ENGINE	50	19	31	50	24105	PERSONNEL EDUCATION & QUALITY MANAGEMENT	50	19	31	50
.. DESIGN & ESTIMATION ..											
24104	DESIGN & ESTIMATION	100	40	60	50	24104	AGRICULTURE, FORESTRY & ANIMAL HUSBANDRY	100	40	60	50
24105	AUTOMOBILE ENGINE	50	19	31	50	24105	PERSONNEL EDUCATION & QUALITY MANAGEMENT	50	19	31	50
.. AUTOMOBILE ENGINE ..											
24105	AUTOMOBILE ENGINE	100	40	60	50	24105	PERSONNEL EDUCATION & QUALITY MANAGEMENT	100	40	60	50
.. PERSONNEL EDUCATION & QUALITY MANAGEMENT ..											
24105	AUTOMOBILE ENGINE	100	40	60	50	24105	PERSONNEL EDUCATION & QUALITY MANAGEMENT	100	40	60	50
.. PERSONNEL EDUCATION & QUALITY MANAGEMENT ..											
24105	AUTOMOBILE ENGINE	100	40	60	50	24105	PERSONNEL EDUCATION & QUALITY MANAGEMENT	100	40	60	50
.. PERSONNEL EDUCATION & QUALITY MANAGEMENT ..											
24105	AUTOMOBILE ENGINE	100	40	60	50	24105	PERSONNEL EDUCATION & QUALITY MANAGEMENT	100	40	60	50

GRAND TOTAL : 1793 / 2342 RESULT PASS DIVISION FIRST

CHECKED BY:

RESULT DECLARED ON 24/1/2021

