

1532000

VISHAL KUMAR TIWARI

NANDANI DEVI RAJESHI KUMAR TIWARI
16104/2001 16TH APRIL TWO THOUSAND ONE
54517-DRIJ NANDANI CON SCH HINGUTAK RD GILANDALI UP

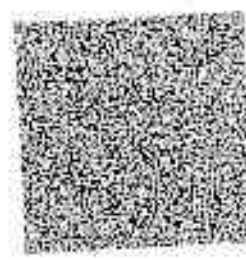
Registration No

R615/54517/0285



5034753

Sl. No.	Subject	Grade	Score	Grade	Score	Grade	Score
002	HINDI COURSE A	A3	B1	A2	08	B1	B1
104	ENGLISH LANG & LIT.	A2	A2	A2	09	A2	B1
041	MATHEMATICS	A2	B1	A2	10	A2	B1
008	SCIENCE	A2	B2	B1	08	A2	B1
007	SOCIAL SCIENCE	A2	B1	B1	09	B1	B1



Class 8
 Daily identifies personal strengths and weaknesses and uses them to arrive at meaningful decisions, raises questions. Capable of independent thinking, has exceptional problem-solving and decision-making skills.
 Empathetic. Displays sensitivity towards differently-abled, possesses good interpersonal skills and appreciates other's opinions, accepts feedback from teachers, peers and peers for self-improvement.
 Self-confident and optimistic, manages various situations and works effectively. Expresses emotions appropriately.

Class 8
 Facilitates personal strengths and weaknesses, evaluates information and chooses appropriate alternatives, makes an informed and constructive opinion to problems.
 Interpersonal and communicative skills are satisfactory and equally gives feedback and criticism positively.
 Identifies the causes of stress and manages personal situations effectively. Expresses emotions appropriately.

Innovative with excellent grasp of any assignment, very punctual in the completion of any assigned task, self-motivated, empathetic, inspires others and an excellent team worker.

Very cooperative with excellent grasp of any assignment and is very punctual in the completion of any assigned task, self-motivated, empathetic, inspires others and an excellent team worker. Ready shoulders responsibility.

Participates actively in extra-curricular activities at different levels, initiates, plans and conducts creative events, very observant, displays an original, innovative approach to the appreciation and understanding of different art forms.

Participates in artistic activities, quite creative, interested, spontaneous and judgemental. Shows an interest.

Very courteous towards teachers, observes school norms, ready to help, communicates and confides in them.

Very courteous to teachers and elders, has a positive attitude towards learning and adheres to school and class norms, communicates effectively with teachers and takes feedback and criticism with positivity.

Expresses ideas and opinions with clarity, is sensitive and supportive towards peers and differently-abled schoolmates, receptive to new ideas and suggestions, involves others and manages diversity well.

Sensitive and supportive towards peers and differently-abled schoolmates, expresses ideas and opinions with clarity in a group, receptive to new opinions and suggestions, displays sensitivity to differences.

Enthusiastic, shoulders responsibility readily and is a keen participant in various school programmes, possesses leadership qualities, involves others, concerned about the environment, Participates in related events.

Punctual and takes part in school programmes regularly, possesses leadership qualities and displays team spirit, motivates and inspires others to participate, Respects school property and takes pride in the school.

Understands value systems, abides by rules and regulations, Ethical and always courteous towards peers and elders, respects the national flag and symbols, sensitive to diversity and shows empathy towards the disadvantaged.

Abides by rules and understands value systems, honest, courteous towards peers and elders, and has leadership qualities, Respects the national flag and symbols, sensitive to diversity, is empathetic towards the disadvantaged.

Actively plans and participates in literary and creative events such as debates, creative writing, dramatization etc. on different levels, has excellent literary skills, an avid reader, creative and collaborative team with peers.

Plans, organizes and actively participates in literary and creative events at various levels, writes short stories, literary criticism and composes poems, an avid reader and displays a high level of interpretative skills.

Represents the school in various scientific forums at national and international events, shows keen interest in scientific schemes, investigative, has excellent laboratory and observation skills.

Displays scientific temperament in everyday life, very observant, plans and participates in scientific activities at different levels, displays precision and observation during laboratory work.

Understands and demonstrates the mechanisms and processes correctly, safe and healthy, good at health regulation exercises, shows keen interest.

Understands and demonstrates the mechanisms and processes correctly, safe and healthy, good at health regulation exercises, shows keen interest.

Shows interest and attitude for administering first aid, trained in procedures and techniques, displays tenacity while handling emergencies, displays patience and commitment.

Well trained in first aid procedures, demonstrates aptitude and tenacity during difficult situations, can handle emergencies, shows commitment to health and safety.

QUALIFIED FOR ADMISSION TO HIGHER CLASSES

Principal
 Nandanani Convent School

Principal of Education