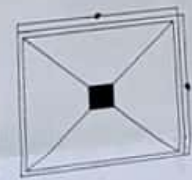
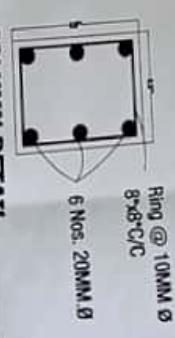
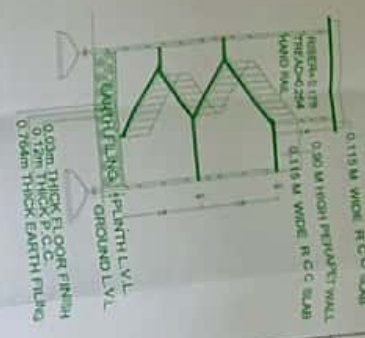
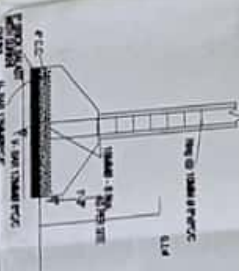


SL. NO.	NAME OF ITEM	SIZE	AREA
1	PRINCIPAL OFFICE	4.8777 SQM	49.42 SQM
2	STAFF ROOM	4.8777 SQM	49.42 SQM
3	OFFICE	4.8777 SQM	49.42 SQM
4	STORAGE ROOM	3.8827 SQM	39.47 SQM
5	STORAGE ROOM	3.8827 SQM	39.47 SQM
6	BOOTH COMMON ROOM	12.1807 SQM	123.88 SQM
7	SMALL COMMON ROOM	12.1807 SQM	123.88 SQM
8	CHITNEY	12.1807 SQM	123.88 SQM
9	FRUIT & GUM ROOM	12.1807 SQM	123.88 SQM
10	MATERIAL	12.1807 SQM	123.88 SQM
11	ASSEMBLY ROOM	12.1807 SQM	123.88 SQM
12	COMPUTER CENTER	12.1807 SQM	123.88 SQM
13	LABORATORY	12.1807 SQM	123.88 SQM
14	WASHING ROOM	12.1807 SQM	123.88 SQM
15	CLASS ROOM	12.1807 SQM	123.88 SQM
16	CLASS ROOM	12.1807 SQM	123.88 SQM
17	CLASS ROOM	12.1807 SQM	123.88 SQM
18	LAB-1	12.1807 SQM	123.88 SQM
19	LAB-2	12.1807 SQM	123.88 SQM
20	LAB-3	12.1807 SQM	123.88 SQM
21	LAB-4	12.1807 SQM	123.88 SQM
22	LAB-5	12.1807 SQM	123.88 SQM

SECTION AT AT-XX



SECTIONAL DETAIL



TOTAL PLOT AREA	=10320.00 Sqmt
COVERED AREA ON GROUND FLOOR	=1160.00 Sqmt
COVERED AREA ON FIRST FLOOR	=1160.00 Sqmt
COVERED AREA ON SECOND FLOOR	=520.00 Sqmt
TOTAL COVERED AREA	=2840.00 Sqmt
OPEN AREA	=9160.00 Sqmt

NAME OF TRUST

BALAJI COLLEGE BHABHAURA  
AURIHAR, DISTRICT-GHAZIAPUR,  
(U.P.), 233221

NAME OF INSTITUTE

BALAJI NURSING & PARAMEDICAL  
PHARMACY COLLEGE BHABHAURA  
AURIHAR, DISTRICT-GHAZIAPUR,  
(U.P.), 233221

COURSE NAME-

DIPLOMA IN PHARMACY

GATA NO- PLOT-NO.-377.

OWNERS SIGNATURE

*Signature*  
आचार्य राजेश  
प्रति, अधिकारी-आचार्य, कानपुर

ARCHITECT-

*Signature*  
Shalendra Singh (B.Arc)  
CA-2002129333  
SHALENDRA SINGH ASSOC  
Enr-23, Gopesh, Noida, 201301