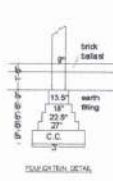
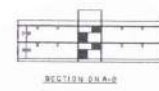
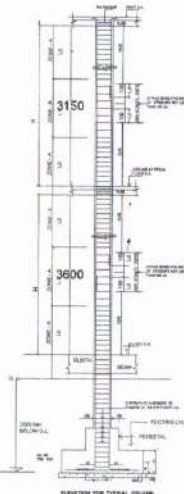
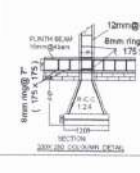
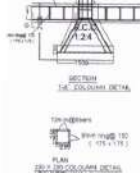
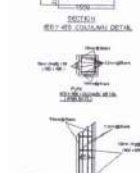
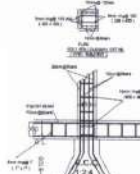
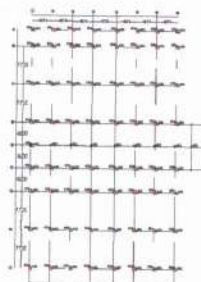
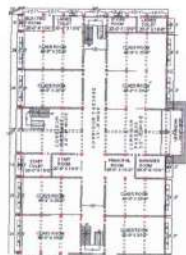


JOINT REINFORCEMENT
 JOINTS WITH 45 DEG. ANGLES TO FACE LESS THAN 100MM SHALL BE REINFORCED BY THE CORNER CORRELATION-REINFORCEMENT AS SHOWN IN EACH SET OF COLUMN AND AT CORNER JOINTS OF BEAM.



PROPOSED BUILDING PLAN FOR "DR. RAM SAHAJUR SINGH MEMORIAL DEGREE COLLEGE" BILASPUR ROAD, MILAK RAMPUR

AREA SCHEDULE

TOTAL PLOT AREA = 88872.00 sq. ft. / 8246.28 SQ. MT.

PROPOSED COVERED AREA

ON G. FLOOR = 18702.00 sq. ft. = 1732.32 SQ. MT.

ON F. FLOOR = 18702.00 sq. ft. = 1732.32 SQ. MT.

TOTAL COVERED AREA = 37404.00 sq. ft. = 3464.64 SQ. MT.

OPENING SCHEDULE

DOOR 4'-0" X 7'-0"

WINDOW 4'-0" X 2'-0"

APPLICANT SIGN

SCHEDULE OF R.C.C. COLUMN BRANDS/LEVELS TO FORM 18 LEVEL

TYPE	NO.	BRAND	LEVEL	NO.	BRAND	LEVEL
COL	1
COL	2



REFERENCE

PROJ. COND. NO. 0

PARK

PLOT LINE

DRAWN BY

Er. S. K. Rizvi
 B.Sc. Engg. (Civil)
 Registered Civil Engineer
 Rampur Development Authority
 RAMU, R.P.