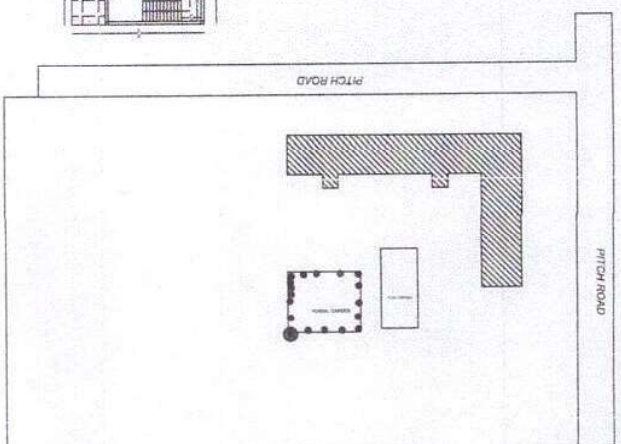


ENGINEERING LEGEND:

- REVISIONS
- DATE
- BY
- FOR
- APPROVED
- DATE
- BY
- FOR
- APPROVED



STAMP OF APPROVAL

अभिप्रायः

EXISTING BUILDING PLAN OF
R.K. INSTITUTE OF MEDICAL
SCIENCES VILL & POST
MAHESH PUR TAH-SAGR
DISTRICT-AZAMGARH
TOTAL PLOT AREA-823050
GATA NO-79880

AREA STATEMENT OF GROUND FLOOR PLAN

ROOM TYPE	AREA	PERCENTAGE
RECEPTION	11.25 SQ.M	0.13%
LABORATORY	11.25 SQ.M	0.13%
OFFICE	11.25 SQ.M	0.13%
STORAGE	11.25 SQ.M	0.13%
ENTRANCE	11.25 SQ.M	0.13%
TOILET	11.25 SQ.M	0.13%
WATER TOWER	11.25 SQ.M	0.13%
STAIR	11.25 SQ.M	0.13%
COVERED VERANDAH	11.25 SQ.M	0.13%
OPEN VERANDAH	11.25 SQ.M	0.13%
UNUTILIZED AREA	11.25 SQ.M	0.13%
LANDSCAPE	11.25 SQ.M	0.13%
ROAD	11.25 SQ.M	0.13%
WATER TOWER	11.25 SQ.M	0.13%
STAIR	11.25 SQ.M	0.13%
COVERED VERANDAH	11.25 SQ.M	0.13%
OPEN VERANDAH	11.25 SQ.M	0.13%
UNUTILIZED AREA	11.25 SQ.M	0.13%
LANDSCAPE	11.25 SQ.M	0.13%
ROAD	11.25 SQ.M	0.13%
TOTAL	823050 SQ.M	100%

AREA STATEMENT OF FIRST FLOOR PLAN

ROOM TYPE	AREA	PERCENTAGE
RECEPTION	11.25 SQ.M	0.13%
LABORATORY	11.25 SQ.M	0.13%
OFFICE	11.25 SQ.M	0.13%
STORAGE	11.25 SQ.M	0.13%
ENTRANCE	11.25 SQ.M	0.13%
TOILET	11.25 SQ.M	0.13%
WATER TOWER	11.25 SQ.M	0.13%
STAIR	11.25 SQ.M	0.13%
COVERED VERANDAH	11.25 SQ.M	0.13%
OPEN VERANDAH	11.25 SQ.M	0.13%
UNUTILIZED AREA	11.25 SQ.M	0.13%
LANDSCAPE	11.25 SQ.M	0.13%
ROAD	11.25 SQ.M	0.13%
TOTAL	823050 SQ.M	100%

AREA STATEMENT OF SECOND FLOOR PLAN

ROOM TYPE	AREA	PERCENTAGE
RECEPTION	11.25 SQ.M	0.13%
LABORATORY	11.25 SQ.M	0.13%
OFFICE	11.25 SQ.M	0.13%
STORAGE	11.25 SQ.M	0.13%
ENTRANCE	11.25 SQ.M	0.13%
TOILET	11.25 SQ.M	0.13%
WATER TOWER	11.25 SQ.M	0.13%
STAIR	11.25 SQ.M	0.13%
COVERED VERANDAH	11.25 SQ.M	0.13%
OPEN VERANDAH	11.25 SQ.M	0.13%
UNUTILIZED AREA	11.25 SQ.M	0.13%
LANDSCAPE	11.25 SQ.M	0.13%
ROAD	11.25 SQ.M	0.13%
TOTAL	823050 SQ.M	100%

अभिप्रायः

AR. ANIL KUMAR MAURVA
Reg No- CA/2018/5765
Plot No- 37 Saketpuri Res Circle
Azamgarh

CON. AREA AT G.F.
CON. AREA AT F.F.
TOTAL CON. AREA
GROUND COVERGE - 13.92%
AGREED PART - 248

1155.96SQM
1155.96SQM
629.23SQM
2941.39SQM

कैलाशी देवी विश्वामल देव
ग्राम-देवाराकदोम पोस्ट-महाराजगंज
तहसील-सगड़ी, जनपद आजमगढ़