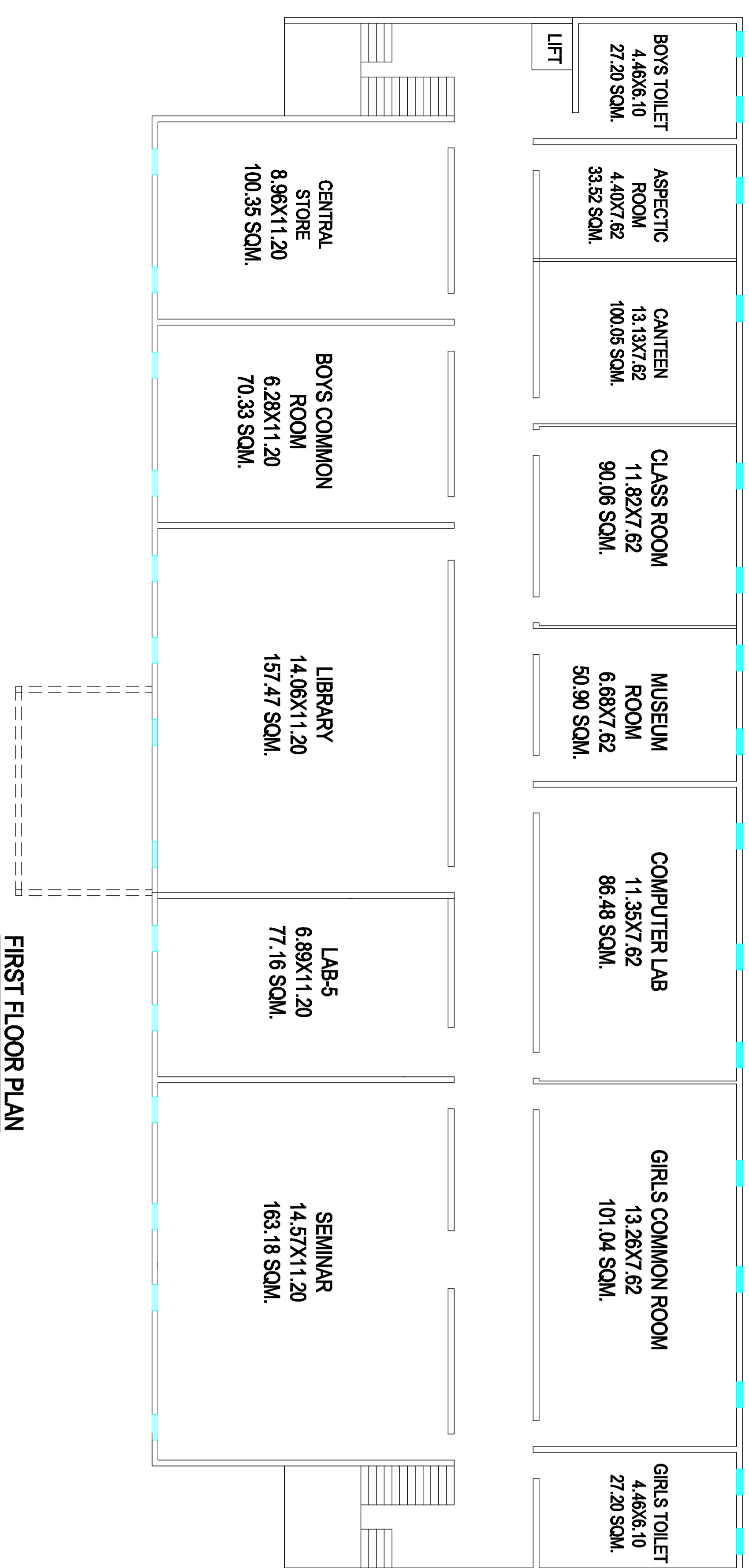
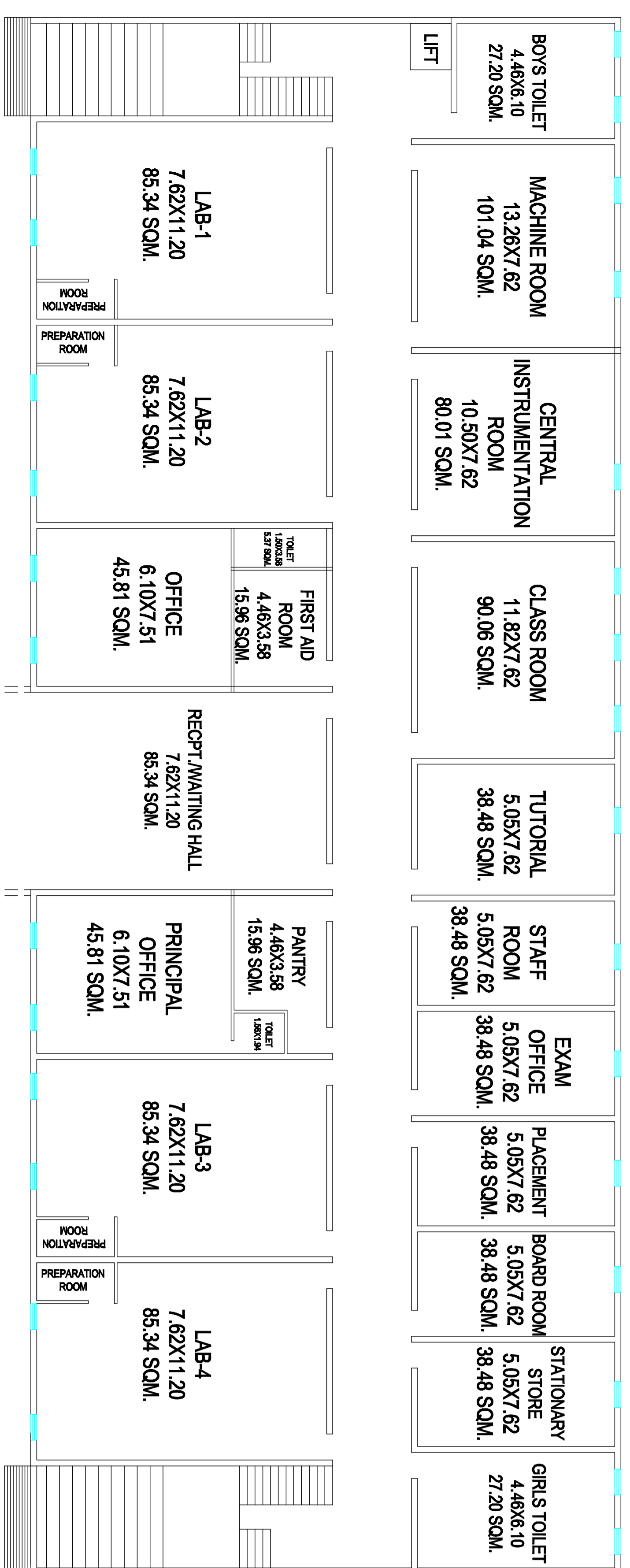


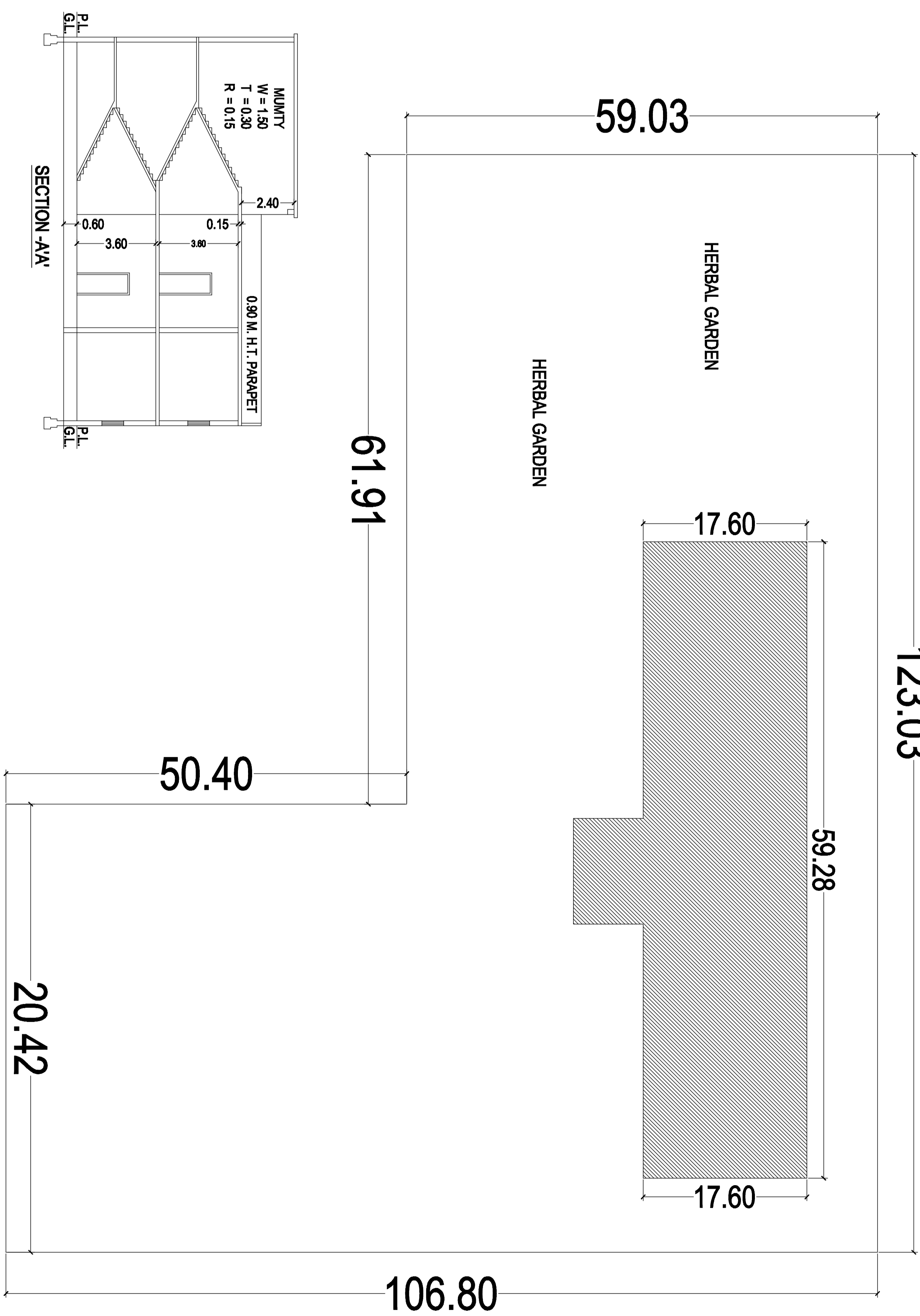
FRONT ELEVATION



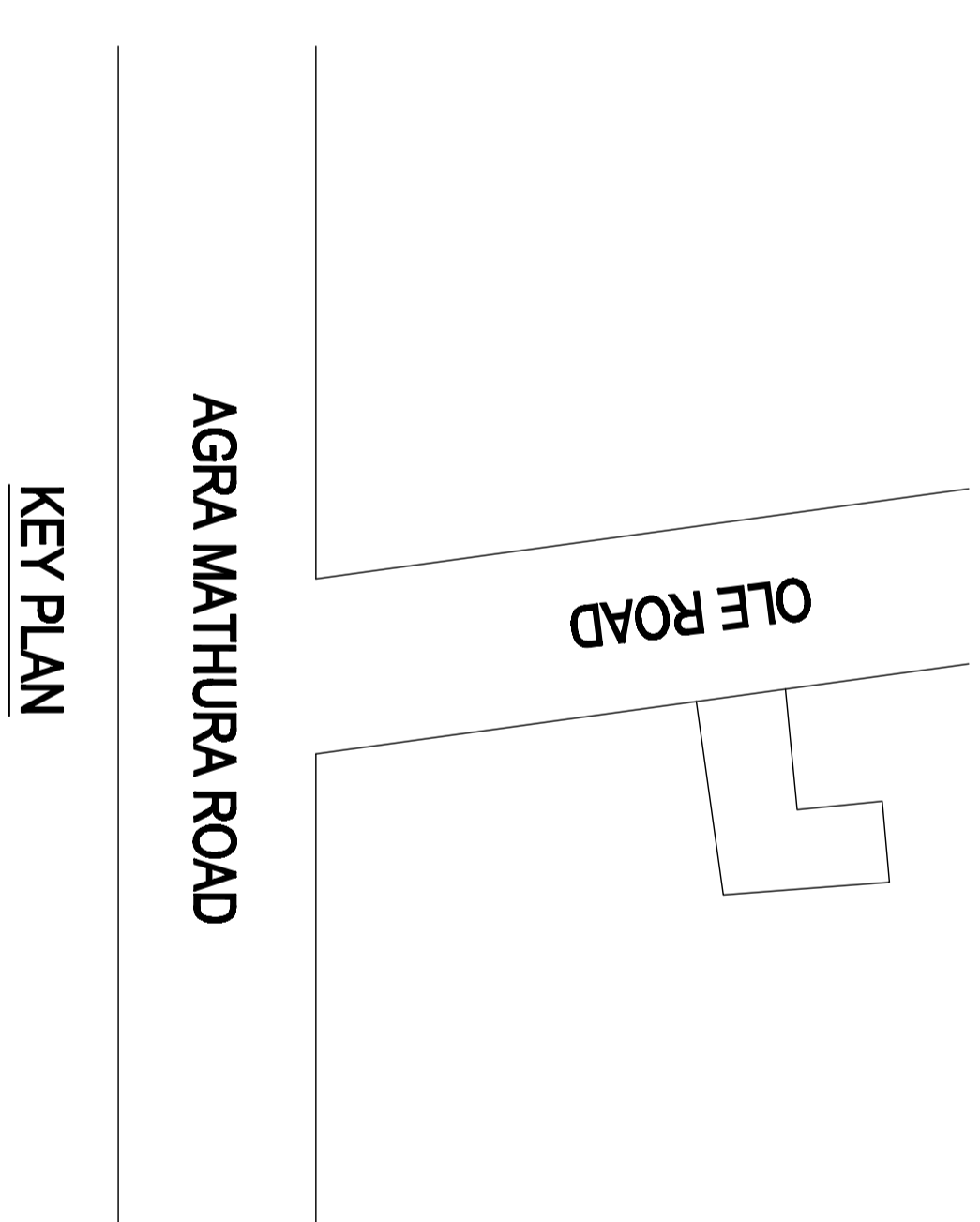
FIRST FLOOR PLAN



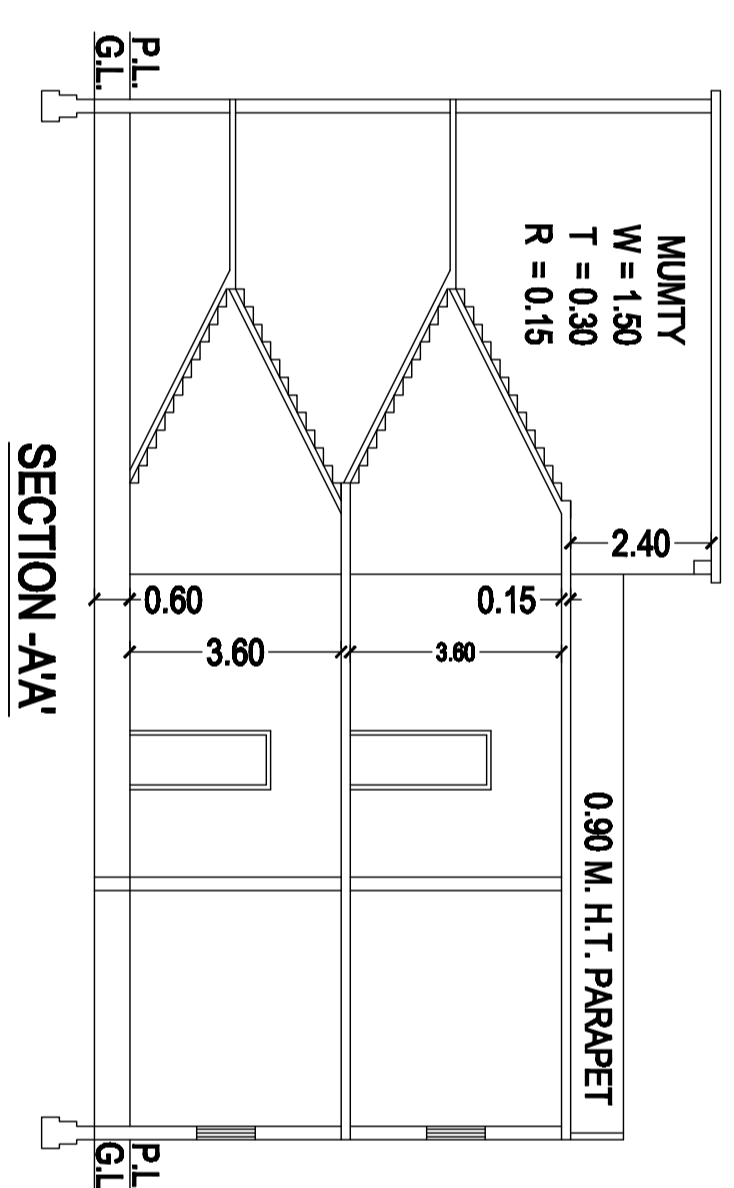
GROUND FLOOR PLAN



SITE PLAN



KEY PLAN



SECTION -A-A-

Area Chart :-
Administrative Area :-

| | |
|-------------------------------|-------------|
| 01. PRINCIPAL ROOM = | 45.81 SQM. |
| 02. BOARD ROOM = | 38.48 SQM. |
| 03. FACULTY = | 27.73 SQM. |
| 04. CENTRAL STORE = | 100.35 SQM. |
| 05. PANTRY = | 15.96 SQM. |
| 06. EXAM CONTROL OFFICE = | 38.48 SQM. |
| 07. PLACEMENT OFFICE = | 38.48 SQM. |
| 08. STATIONARY STORE = | 38.48 SQM. |
| 09. FIRST AID ROOM = | 15.96 SQM. |
| 10. GIRLS COMMON ROOM = | 101.04 SQM. |
| 11. BOYS COMMON ROOM = | 70.33 SQM. |
| 12. TOILET = | 150.00 SQM. |
| 13. CANTINEEN = | 100.00 SQM. |
| Instructional Area :- | |
| 14. CLASS ROOM = | 90.06 SQM. |
| 15. CLASS ROOM = | 90.06 SQM. |
| 16. LIBRARY = | 157.47 SQM. |
| 17. COMPUTER LAB = | 86.48 SQM. |
| 18. TUTORIAL ROOM = | 38.48 SQM. |
| 19. SEMINAR HALL = | 183.18 SQM. |
| 20. ALL LAB = | 418.52 SQM. |
| 21. MACHINE ROOM = | 101.04 SQM. |
| 22. MUSELIUM = | 50.90 SQM. |
| 23. ASPECTIC ROOM = | 32.52 SQM. |
| 24. STAFF ROOM = | 38.48 SQM. |
| 25. CENTRAL INSTRUMENTATION = | 80.00 SQM. |

SPECIFICATION :-

| | |
|-------------------------|--------------------------|
| FOUNDATION :- | CEMENT & CONC. 1:4:8 |
| WALLS :- | 8" CLASS BRICKS IN WALLS |
| DOORS/WINDOWS :- | IRON FRAMES & WOODEN |
| ROOF :- | R.C.C. SLAB |
| PLASTER :- | CEMENT & SAND MORTAR. |
| FINISHING :- | WHITE & COLOUR WASHING |
| AREA STATEMENT :- | SQ.M. |
| TOTAL LAND AREA OF | 8100.00 |
| EXISTING BLDG. AREA FF. | 1472.87 |
| OPEN AREA FF. | 6627.13 |
| F.A.R. | 0.38 |

SCHEDULED OF DOORS/WINDOWS :-

| | | |
|------|-----|--------------|
| GATE | --- | (3.90x2.90M) |
| W1 | --- | (2.00x2.00M) |
| W2 | --- | (2.00x2.00M) |
| D1 | --- | (1.00x2.00M) |
| D2 | --- | (1.00x2.00M) |
| D3 | --- | (1.00x2.00M) |
| D4 | --- | (1.00x2.00M) |
| D5 | --- | (1.00x2.00M) |
| D6 | --- | (1.00x2.00M) |
| D7 | --- | (1.00x2.00M) |
| D8 | --- | (1.00x2.00M) |
| D9 | --- | (1.00x2.00M) |
| D10 | --- | (1.00x2.00M) |
| D11 | --- | (1.00x2.00M) |
| D12 | --- | (1.00x2.00M) |
| D13 | --- | (1.00x2.00M) |
| D14 | --- | (1.00x2.00M) |
| D15 | --- | (1.00x2.00M) |
| D16 | --- | (1.00x2.00M) |
| D17 | --- | (1.00x2.00M) |
| D18 | --- | (1.00x2.00M) |
| D19 | --- | (1.00x2.00M) |
| D20 | --- | (1.00x2.00M) |
| D21 | --- | (1.00x2.00M) |
| D22 | --- | (1.00x2.00M) |
| D23 | --- | (1.00x2.00M) |
| D24 | --- | (1.00x2.00M) |
| D25 | --- | (1.00x2.00M) |
| D26 | --- | (1.00x2.00M) |
| D27 | --- | (1.00x2.00M) |
| D28 | --- | (1.00x2.00M) |
| D29 | --- | (1.00x2.00M) |
| D30 | --- | (1.00x2.00M) |
| D31 | --- | (1.00x2.00M) |
| D32 | --- | (1.00x2.00M) |
| D33 | --- | (1.00x2.00M) |
| D34 | --- | (1.00x2.00M) |
| D35 | --- | (1.00x2.00M) |
| D36 | --- | (1.00x2.00M) |
| D37 | --- | (1.00x2.00M) |
| D38 | --- | (1.00x2.00M) |
| D39 | --- | (1.00x2.00M) |
| D40 | --- | (1.00x2.00M) |
| D41 | --- | (1.00x2.00M) |
| D42 | --- | (1.00x2.00M) |
| D43 | --- | (1.00x2.00M) |
| D44 | --- | (1.00x2.00M) |
| D45 | --- | (1.00x2.00M) |
| D46 | --- | (1.00x2.00M) |
| D47 | --- | (1.00x2.00M) |
| D48 | --- | (1.00x2.00M) |
| D49 | --- | (1.00x2.00M) |
| D50 | --- | (1.00x2.00M) |
| D51 | --- | (1.00x2.00M) |
| D52 | --- | (1.00x2.00M) |
| D53 | --- | (1.00x2.00M) |
| D54 | --- | (1.00x2.00M) |
| D55 | --- | (1.00x2.00M) |
| D56 | --- | (1.00x2.00M) |
| D57 | --- | (1.00x2.00M) |
| D58 | --- | (1.00x2.00M) |
| D59 | --- | (1.00x2.00M) |
| D60 | --- | (1.00x2.00M) |
| D61 | --- | (1.00x2.00M) |
| D62 | --- | (1.00x2.00M) |
| D63 | --- | (1.00x2.00M) |
| D64 | --- | (1.00x2.00M) |
| D65 | --- | (1.00x2.00M) |
| D66 | --- | (1.00x2.00M) |
| D67 | --- | (1.00x2.00M) |
| D68 | --- | (1.00x2.00M) |
| D69 | --- | (1.00x2.00M) |
| D70 | --- | (1.00x2.00M) |
| D71 | --- | (1.00x2.00M) |
| D72 | --- | (1.00x2.00M) |
| D73 | --- | (1.00x2.00M) |
| D74 | --- | (1.00x2.00M) |
| D75 | --- | (1.00x2.00M) |
| D76 | --- | (1.00x2.00M) |
| D77 | --- | (1.00x2.00M) |
| D78 | --- | (1.00x2.00M) |
| D79 | --- | (1.00x2.00M) |
| D80 | --- | (1.00x2.00M) |
| D81 | --- | (1.00x2.00M) |
| D82 | --- | (1.00x2.00M) |
| D83 | --- | (1.00x2.00M) |
| D84 | --- | (1.00x2.00M) |
| D85 | --- | (1.00x2.00M) |
| D86 | --- | (1.00x2.00M) |
| D87 | --- | (1.00x2.00M) |
| D88 | --- | (1.00x2.00M) |
| D89 | --- | (1.00x2.00M) |
| D90 | --- | (1.00x2.00M) |
| D91 | --- | (1.00x2.00M) |
| D92 | --- | (1.00x2.00M) |
| D93 | --- | (1.00x2.00M) |
| D94 | --- | (1.00x2.00M) |
| D95 | --- | (1.00x2.00M) |
| D96 | --- | (1.00x2.00M) |
| D97 | --- | (1.00x2.00M) |
| D98 | --- | (1.00x2.00M) |
| D99 | --- | (1.00x2.00M) |
| D100 | --- | (1.00x2.00M) |

REFERENCE :-
EXISTING CONSTRUCTION
OTHERS PROPERTY
DRAWING

TITLE :-
EXISTING PLAN OF A PHARMACY BUILDING
NAMED "NANDABABA TRUST COLLEGE OF
PHARMACY"
OLE ROAD MATHURA
DISTT. MATHURA
SECRETARY :-

NORTH :-

SCALE :-
FILE NAME :-
DRN BY :-

ARCHITECTS :-
PRESIDENTS SIGN
MOHIT KUMAR SHARMA