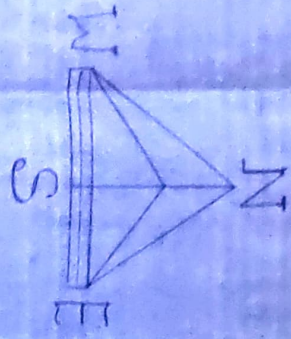
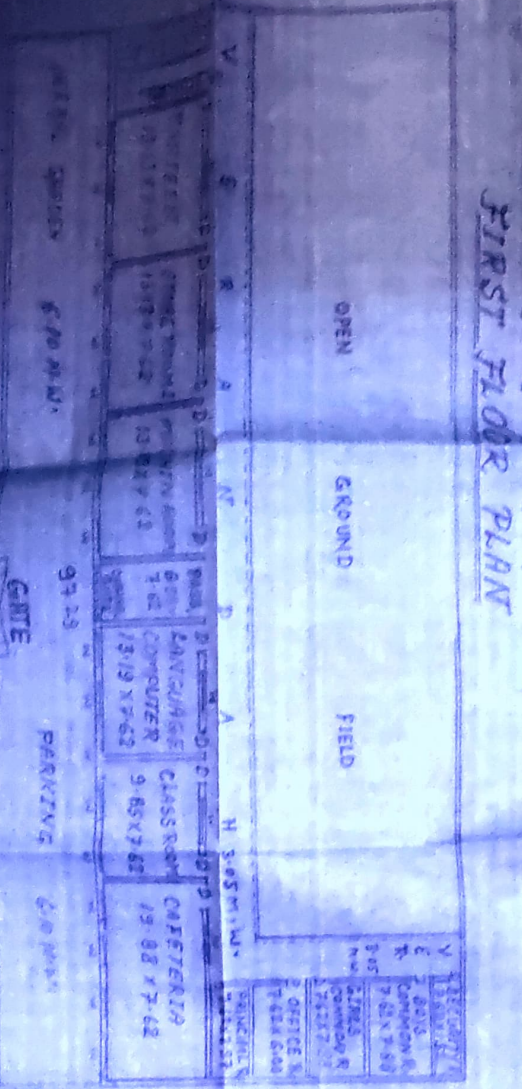
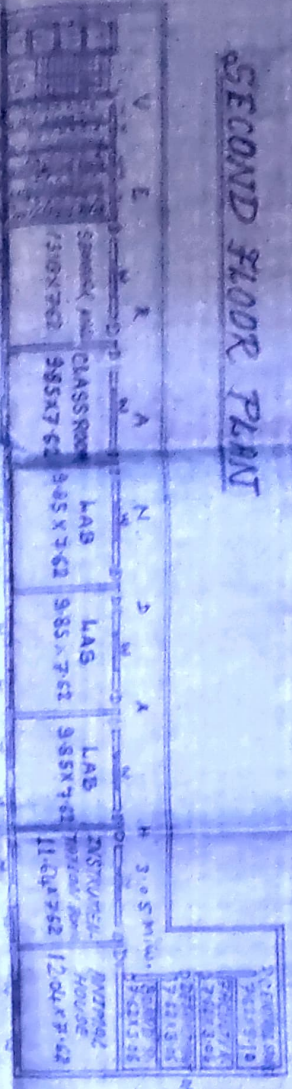
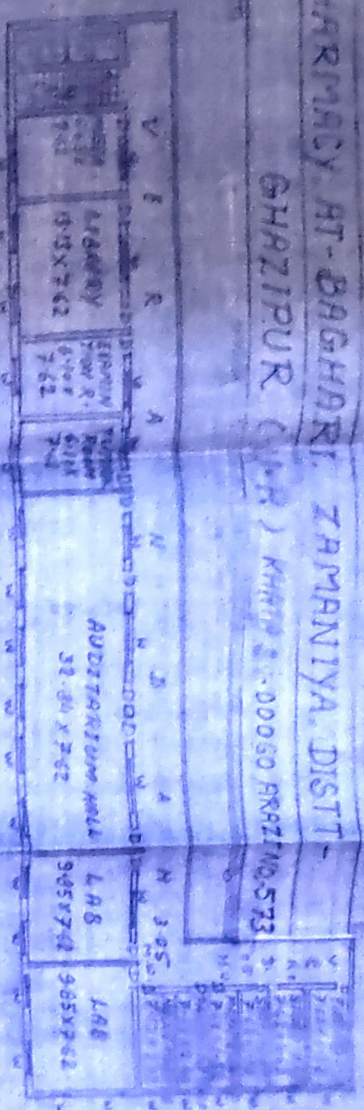


**BUILDING PLAN OF SURVEILLANCE WASHINGTON COLLEGE OF PHARMACY AT-BAGHARI, ZAMANIYA, DIST- GHAZIPUR (M.P.) PIN CODE 476006 BRZ/NO.573**



SIGN OF APPLICANT

ARCHITECT (CAR)



No	DESCRIPTION	Area
1	CROSS AREA	1573.00
2	LABORATORY	77.28
3	SEMINAR ROOM	46.74
4	AUDITORIUM HALL	244.16
5	L.H.B. ROOM	177.76
6	CLASS ROOM	75.36
7	LABORATORY	87.48
8	LABORATORY	87.48
9	LABORATORY	87.48
10	LABORATORY	87.48
11	LABORATORY	87.48
12	LABORATORY	87.48
13	LABORATORY	87.48
14	LABORATORY	87.48
15	LABORATORY	87.48
16	LABORATORY	87.48
17	LABORATORY	87.48
18	LABORATORY	87.48
19	LABORATORY	87.48
20	LABORATORY	87.48
21	LABORATORY	87.48
22	LABORATORY	87.48
23	LABORATORY	87.48
24	LABORATORY	87.48
25	LABORATORY	87.48
26	LABORATORY	87.48
27	LABORATORY	87.48
28	LABORATORY	87.48
29	LABORATORY	87.48
30	LABORATORY	87.48
31	LABORATORY	87.48
32	LABORATORY	87.48
33	LABORATORY	87.48
34	LABORATORY	87.48
35	LABORATORY	87.48
36	LABORATORY	87.48
37	LABORATORY	87.48
38	LABORATORY	87.48
39	LABORATORY	87.48
40	LABORATORY	87.48
41	LABORATORY	87.48
42	LABORATORY	87.48
43	LABORATORY	87.48
44	LABORATORY	87.48
45	LABORATORY	87.48
46	LABORATORY	87.48
47	LABORATORY	87.48
48	LABORATORY	87.48
49	LABORATORY	87.48
50	LABORATORY	87.48
51	LABORATORY	87.48
52	LABORATORY	87.48
53	LABORATORY	87.48
54	LABORATORY	87.48
55	LABORATORY	87.48
56	LABORATORY	87.48
57	LABORATORY	87.48
58	LABORATORY	87.48
59	LABORATORY	87.48
60	LABORATORY	87.48
61	LABORATORY	87.48
62	LABORATORY	87.48
63	LABORATORY	87.48
64	LABORATORY	87.48
65	LABORATORY	87.48
66	LABORATORY	87.48
67	LABORATORY	87.48
68	LABORATORY	87.48
69	LABORATORY	87.48
70	LABORATORY	87.48
71	LABORATORY	87.48
72	LABORATORY	87.48
73	LABORATORY	87.48
74	LABORATORY	87.48
75	LABORATORY	87.48
76	LABORATORY	87.48
77	LABORATORY	87.48
78	LABORATORY	87.48
79	LABORATORY	87.48
80	LABORATORY	87.48
81	LABORATORY	87.48
82	LABORATORY	87.48
83	LABORATORY	87.48
84	LABORATORY	87.48
85	LABORATORY	87.48
86	LABORATORY	87.48
87	LABORATORY	87.48
88	LABORATORY	87.48
89	LABORATORY	87.48
90	LABORATORY	87.48
91	LABORATORY	87.48
92	LABORATORY	87.48
93	LABORATORY	87.48
94	LABORATORY	87.48
95	LABORATORY	87.48
96	LABORATORY	87.48
97	LABORATORY	87.48
98	LABORATORY	87.48
99	LABORATORY	87.48
100	LABORATORY	87.48
101	LABORATORY	87.48
102	LABORATORY	87.48
103	LABORATORY	87.48
104	LABORATORY	87.48
105	LABORATORY	87.48
106	LABORATORY	87.48
107	LABORATORY	87.48
108	LABORATORY	87.48
109	LABORATORY	87.48
110	LABORATORY	87.48
111	LABORATORY	87.48
112	LABORATORY	87.48
113	LABORATORY	87.48
114	LABORATORY	87.48
115	LABORATORY	87.48
116	LABORATORY	87.48
117	LABORATORY	87.48
118	LABORATORY	87.48
119	LABORATORY	87.48
120	LABORATORY	87.48
121	LABORATORY	87.48
122	LABORATORY	87.48
123	LABORATORY	87.48
124	LABORATORY	87.48
125	LABORATORY	87.48
126	LABORATORY	87.48
127	LABORATORY	87.48
128	LABORATORY	87.48
129	LABORATORY	87.48
130	LABORATORY	87.48
131	LABORATORY	87.48
132	LABORATORY	87.48
133	LABORATORY	87.48
134	LABORATORY	87.48
135	LABORATORY	87.48
136	LABORATORY	87.48
137	LABORATORY	87.48
138	LABORATORY	87.48
139	LABORATORY	87.48
140	LABORATORY	87.48
141	LABORATORY	87.48
142	LABORATORY	87.48
143	LABORATORY	87.48
144	LABORATORY	87.48
145	LABORATORY	87.48
146	LABORATORY	87.48
147	LABORATORY	87.48
148	LABORATORY	87.48
149	LABORATORY	87.48
150	LABORATORY	87.48
151	LABORATORY	87.48
152	LABORATORY	87.48
153	LABORATORY	87.48
154	LABORATORY	87.48
155	LABORATORY	87.48
156	LABORATORY	87.48
157	LABORATORY	87.48
158	LABORATORY	87.48
159	LABORATORY	87.48
160	LABORATORY	87.48
161	LABORATORY	87.48
162	LABORATORY	87.48
163	LABORATORY	87.48
164	LABORATORY	87.48
165	LABORATORY	87.48
166	LABORATORY	87.48
167	LABORATORY	87.48
168	LABORATORY	87.48
169	LABORATORY	87.48
170	LABORATORY	87.48
171	LABORATORY	87.48
172	LABORATORY	87.48
173	LABORATORY	87.48
174	LABORATORY	87.48
175	LABORATORY	87.48
176	LABORATORY	87.48
177	LABORATORY	87.48
178	LABORATORY	87.48
179	LABORATORY	87.48
180	LABORATORY	87.48
181	LABORATORY	87.48
182	LABORATORY	87.48
183	LABORATORY	87.48
184	LABORATORY	87.48
185	LABORATORY	87.48
186	LABORATORY	87.48
187	LABORATORY	87.48
188	LABORATORY	87.48
189	LABORATORY	87.48
190	LABORATORY	87.48
191	LABORATORY	87.48
192	LABORATORY	87.48
193	LABORATORY	87.48
194	LABORATORY	87.48
195	LABORATORY	87.48
196	LABORATORY	87.48
197	LABORATORY	87.48
198	LABORATORY	87.48
199	LABORATORY	87.48
200	LABORATORY	87.48

1. TOTAL PLOT AREA = 8100000

2. COVERED AREA = 1573000

3. COVERED AREA = 1573000

4. COVERED AREA = 1573000

5. TOTAL COVERED AREA = 3146000

6. OPEN AREA = 4954000