

EXISTING BUILDING OF SHRI RAM
JANKI COLLEGE OF PHARMACY
VILL & POST ANAWA SUFI TEHSIL
MILKIPUR DIST. AYODHYA
GATA NO. 2666, 2871, 2869, 2862, 2861, 2873,
2859

AREA STATEMENT
PLOT AREA = 8100.00 SQ. M.
COVID. AREA ON G.F BLOCK(A+B) = 624.31 SQ.M.
COVID. AREA ON F.F BLOCK(A+B) = 624.31 SQ.M.
COVID. AREA ON S.F BLOCK(A+B) = 388.47 SQ.M.
TOTAL COVID AREA = 1637.09 SQ.M.
MUNITY AREA = 44.84 SQ.M.

AREA ON F.F. OF FACILITY

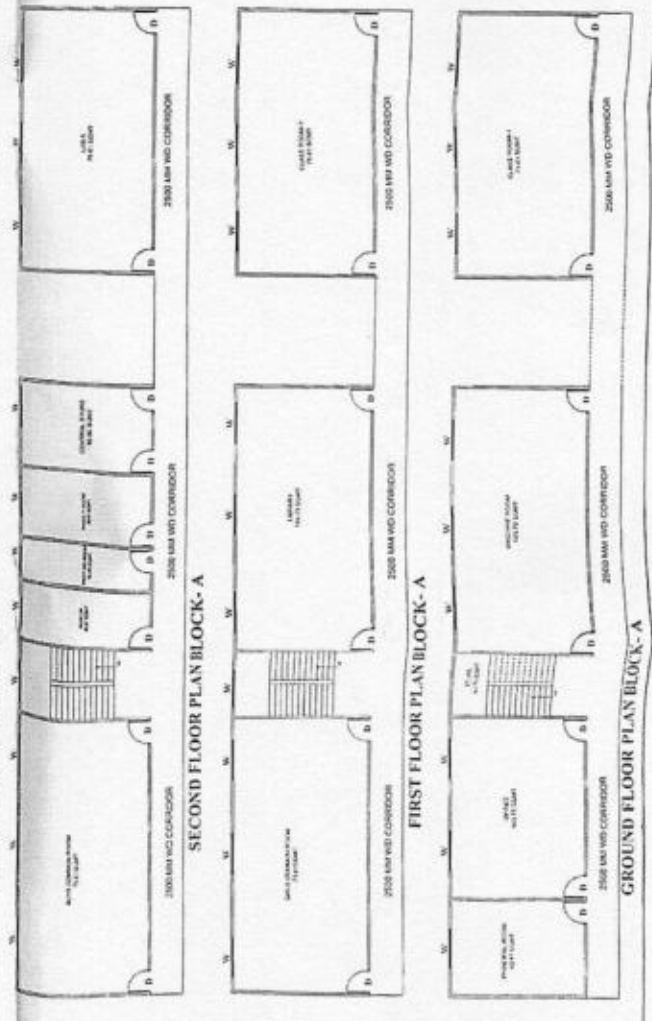
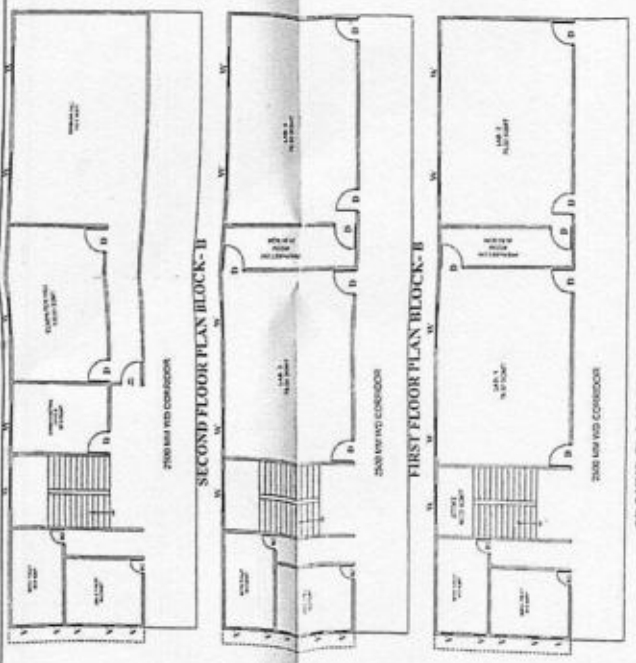
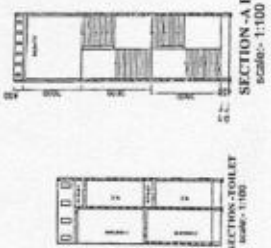
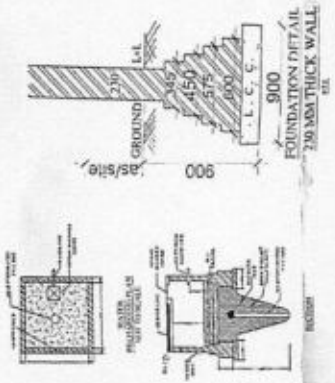
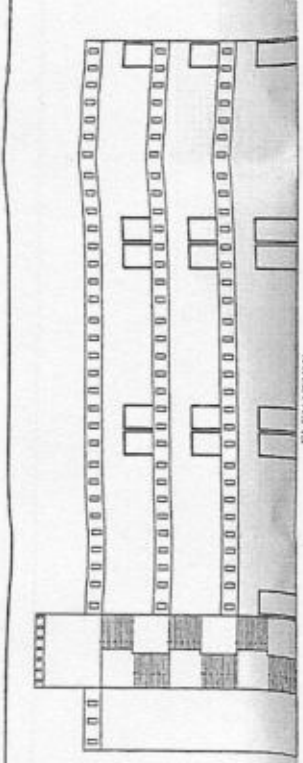
S.NO	TYPE OF ROOM	NO. OF ROOMS	AREA (SQ.M)
1	PHARMACY DISPENSARY	20	42.47
2	PHARMACY STORE	20	42.47
3	PHARMACY W.C.	20	42.47
4	STORAGE	20	42.47
5	CLASS ROOM	20	42.47
6	PHARMACEUTICAL LAB	20	42.47
7	COMPUTER CENTER	20	42.47
8	RECEPTION HALL	20	42.47
9	LABORATORY	20	42.47
10	RECEPTION HALL	20	42.47
11	RECEPTION HALL	20	42.47
12	RECEPTION HALL	20	42.47
13	RECEPTION HALL	20	42.47
14	RECEPTION HALL	20	42.47
15	BOYS COMMON ROOM	20	42.47
16	GIRLS COMMON ROOM	20	42.47
17	W.C.	20	42.47
18	W.C.	20	42.47
19	W.C.	20	42.47
20	W.C.	20	42.47

SCHEDULE OF OPENINGS

S.NO	TYPE	WIDTH	SILL LVL.	UNTEL LVL.
1.	D	1200	0.00	2550
2.	D1	1000	0.00	2550
3.	D2	750	0.00	2550
4.	W	2000	900	2550
5.	W1	1800	900	2550
6.	W2	1500	900	2550
7.	V1	900	2100	2550

NOTES:-
ALL DIMENSION ARE IN MM.

OWNER'S SIGN. _____
ARCHITECT SIGN. _____
DATE: _____



Handwritten notes in Hindi regarding the project and site conditions.