

1. [Illegible text]

2. [Illegible text]

3. [Illegible text]

4. [Illegible text]

5. [Illegible text]

6. [Illegible text]

7. [Illegible text]

8. [Illegible text]

9. [Illegible text]

10. [Illegible text]

11. [Illegible text]

12. [Illegible text]

13. [Illegible text]

14. [Illegible text]

15. [Illegible text]

16. [Illegible text]

17. [Illegible text]

18. [Illegible text]

19. [Illegible text]

20. [Illegible text]



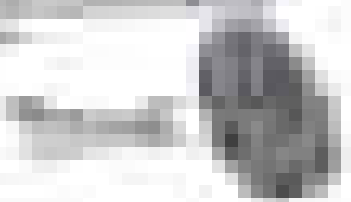
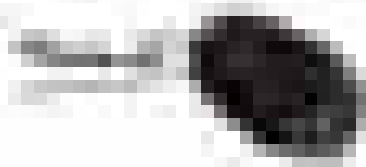


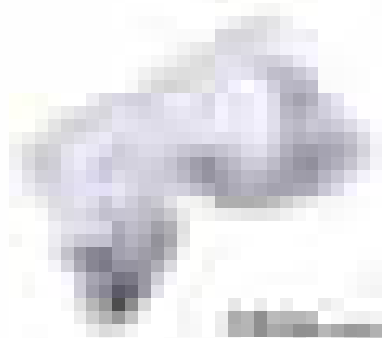
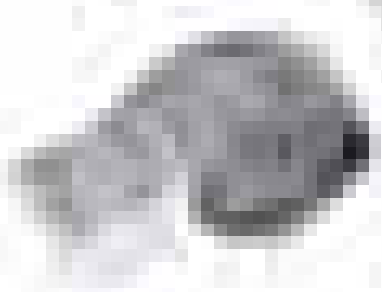
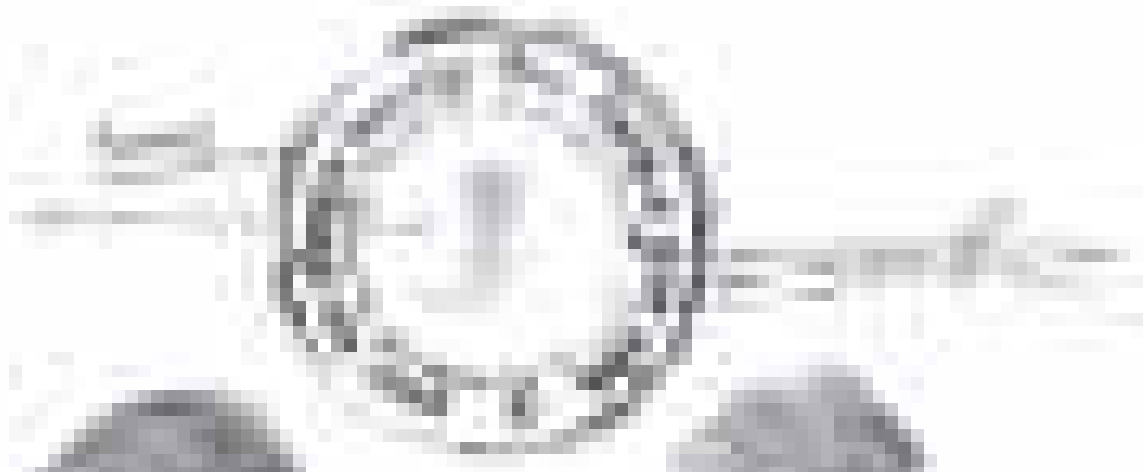






Several lines of text, possibly a list or a series of entries, located below the table. The text is mostly illegible due to the low resolution of the scan.









# REPORT ON THE PROGRESS OF THE WORK

FOR THE YEAR 1900

1900

1900

1900

1900

1900





# THE UNIVERSITY OF CHICAGO



THE UNIVERSITY OF CHICAGO PRESS

[The main body of the page contains several lines of text that are extremely blurry and illegible. The text appears to be organized into paragraphs, but the individual words and sentences cannot be discerned.]





# WORLDWIDE TRAVEL

WORLDWIDE TRAVEL is a leading travel agency offering a wide range of services to our clients.

WORLDWIDE TRAVEL is a leading travel agency offering a wide range of services to our clients.

WORLDWIDE TRAVEL is a leading travel agency offering a wide range of services to our clients.

WORLDWIDE TRAVEL is a leading travel agency offering a wide range of services to our clients.

WORLDWIDE TRAVEL is a leading travel agency offering a wide range of services to our clients.

## WORLDWIDE TRAVEL

WORLDWIDE TRAVEL is a leading travel agency offering a wide range of services to our clients.

WORLDWIDE TRAVEL is a leading travel agency offering a wide range of services to our clients.

WORLDWIDE TRAVEL is a leading travel agency offering a wide range of services to our clients.

WORLDWIDE TRAVEL is a leading travel agency offering a wide range of services to our clients.

















# THE UNIVERSITY OF CHICAGO

THE UNIVERSITY OF CHICAGO  
1100 EAST 58TH STREET  
CHICAGO, ILLINOIS 60637  
TEL: (773) 936-3000  
WWW.CHICAGO.EDU

THE UNIVERSITY OF CHICAGO  
1100 EAST 58TH STREET  
CHICAGO, ILLINOIS 60637

THE UNIVERSITY OF CHICAGO | 1100 EAST 58TH STREET | CHICAGO, ILLINOIS 60637 | TEL: (773) 936-3000 | WWW.CHICAGO.EDU

[REDACTED]

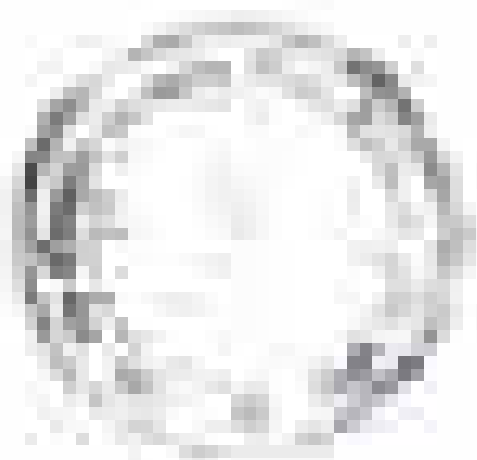


1. The first part of the document discusses the importance of maintaining accurate records of all transactions and activities. It emphasizes the need for transparency and accountability in financial reporting.

2. The second part of the document outlines the various methods and techniques used to collect and analyze data. It includes a detailed description of the experimental procedures and the tools used for data collection.

3. The third part of the document presents the results of the study, including a comparison of the different methods and techniques used. It discusses the strengths and weaknesses of each method and provides a summary of the findings.

4. The final part of the document concludes the study and provides recommendations for future research. It highlights the need for further investigation into the effectiveness of the different methods and techniques used.



# THE UNIVERSITY OF CHICAGO

THE UNIVERSITY OF CHICAGO  
1100 SOUTH EAST ASIAN AVENUE  
CHICAGO, ILLINOIS 60607  
TEL: (773) 835-3100  
WWW.CHICAGO.EDU

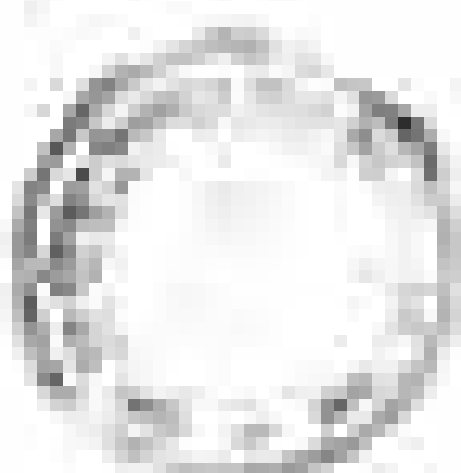
## ADMISSIONS

For more information, visit [www.chicago.edu/admissions](http://www.chicago.edu/admissions)

- 1. Apply by the deadline.
- 2. Submit transcripts from all schools attended.
- 3. Take the SAT or ACT.
- 4. Write an essay.
- 5. Get letters of recommendation.
- 6. Interview with an admissions officer.
- 7. Receive an offer of admission.
- 8. Accept the offer and pay the deposit.
- 9. Complete financial aid forms.
- 10. Register for classes.

For more information, visit [www.chicago.edu/admissions](http://www.chicago.edu/admissions)

Handwritten text at the top of the page, possibly a title or header, which is mostly illegible due to blurring.



Handwritten text at the bottom of the page, likely a signature or footer, which is mostly illegible due to blurring.