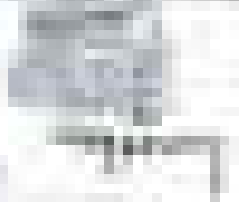
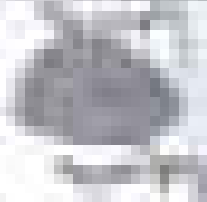
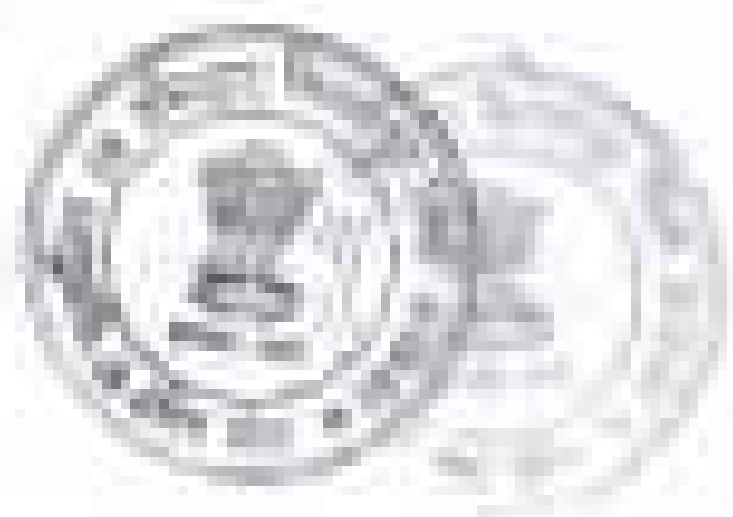


Several lines of text, possibly a list or a series of short paragraphs, located in the middle section of the page. The text is mostly illegible due to low resolution.



Two lines of text at the bottom center of the page, possibly a signature or a date.

Handwritten text, possibly a list or notes, located in the upper left quadrant of the page. The text is illegible due to extreme blurriness and low resolution.

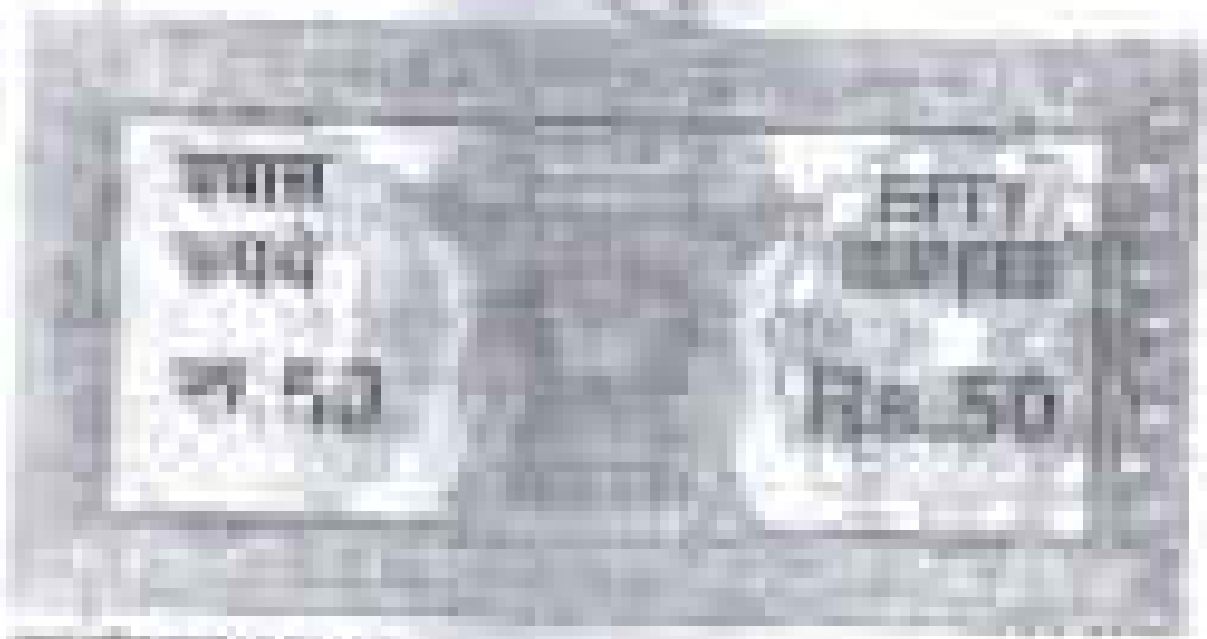




THE UNIVERSITY OF CHICAGO

PHILOSOPHY DEPARTMENT
1100 EAST 58TH STREET
CHICAGO, ILLINOIS 60637
TEL: (773) 936-3300
WWW.CHICAGOEDU.EDU

PHILOSOPHY DEPARTMENT
1100 EAST 58TH STREET
CHICAGO, ILLINOIS 60637
TEL: (773) 936-3300
WWW.CHICAGOEDU.EDU



The following is a list of the names of the members of the committee who were appointed to investigate the charges against the members of the Legislative Assembly in the case of the Jharkhand State. The names are given in the order in which they were appointed. The names of the members who were appointed to the committee are given in the order in which they were appointed. The names of the members who were appointed to the committee are given in the order in which they were appointed. The names of the members who were appointed to the committee are given in the order in which they were appointed.

The names of the members who were appointed to the committee are given in the order in which they were appointed. The names of the members who were appointed to the committee are given in the order in which they were appointed. The names of the members who were appointed to the committee are given in the order in which they were appointed. The names of the members who were appointed to the committee are given in the order in which they were appointed.

1998-1999



1998-1999

1998-1999



1. The first part of the document discusses the general situation of the country and the progress of the work. It mentions the importance of the work and the need for a systematic approach. The text is somewhat blurry but appears to be a formal report or a set of instructions.

2. The second part of the document describes the specific tasks and responsibilities of the various departments. It outlines the scope of the work and the expected results. The text is organized into several paragraphs, each detailing a different aspect of the project.

3. The third part of the document provides a summary of the work done so far and the results achieved. It highlights the achievements and the challenges faced. The text is concise and to the point, providing a clear overview of the progress.

4. The fourth part of the document discusses the future plans and the steps to be taken. It outlines the objectives and the strategies for the coming period. The text is forward-looking and provides a clear direction for the work.

5. The fifth part of the document contains the conclusions and the recommendations. It summarizes the main findings and provides suggestions for improvement. The text is clear and easy to understand, providing a solid basis for decision-making.

6. The sixth part of the document is a list of references and sources. It includes the names of the authors, the titles of the works, and the publishers. The list is comprehensive and covers all the relevant literature on the subject.

7. The seventh part of the document is a list of appendices and supplementary materials. It includes the names of the documents, the dates, and the locations. The list is detailed and provides a complete record of the work.

8. The eighth part of the document is a list of the authors and the contributors. It includes the names, titles, and affiliations of all the individuals who have contributed to the work. The list is alphabetical and provides a clear acknowledgment of their contributions.



1877
1878
1879

1880
1881
1882



1000

1000



1000

1000



UNITED STATES POSTAGE

THE UNITED STATES POSTAGE OFFICE HAS THE HONOR TO ANNOUNCE THAT IT IS NOW OFFERING FOR SALE TO THE PUBLIC THE FOLLOWING POSTAGE STAMPS:

UNITED STATES POSTAGE
FIFTY CENTS

UNITED STATES POSTAGE
FIFTY CENTS



UNITED STATES POSTAGE
FIFTY CENTS

111
112
113
114
115
116
117
118
119
120
121
122
123
124
125
126
127
128
129
130
131
132
133
134
135
136
137
138
139
140
141
142
143
144
145
146
147
148
149
150
151
152
153
154
155
156
157
158
159
160
161
162
163
164
165
166
167
168
169
170
171
172
173
174
175
176
177
178
179
180
181
182
183
184
185
186
187
188
189
190
191
192
193
194
195
196
197
198
199
200





THE UNIVERSITY OF CHICAGO PRESS

THE UNIVERSITY OF CHICAGO PRESS
54 EAST LAKE STREET
CHICAGO, ILLINOIS 60607
TEL: 773-936-3700
WWW.UCHICAGO.PRESS.EDU



Handwritten text, possibly a signature or date, located in the upper left corner of the page.

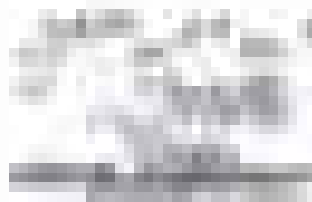


Handwritten text or a signature located in the lower right area of the page.



[The text in this section is extremely faint and illegible due to heavy noise and low resolution. It appears to be several lines of a letter or document.]

[The text in this section is also illegible due to the same quality issues. It appears to be the bottom portion of a document, possibly including a signature or footer.]

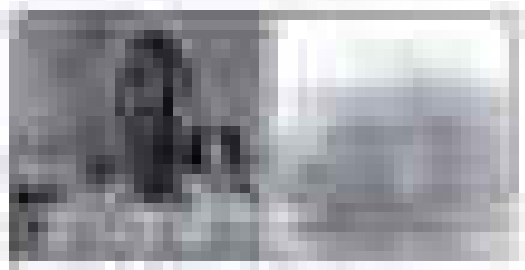


May 2011

Working Paper

Author: [Name] **Department:** [Department] **Title:** [Title]

Abstract: [Abstract text]



Keywords: [Keywords]

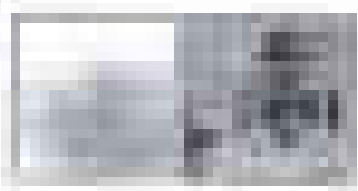


Publication Information:
[Publication details]

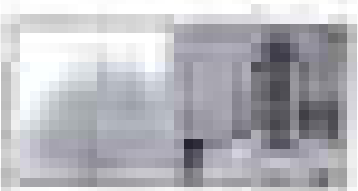
DATE: _____ TIME: _____

NAME: _____

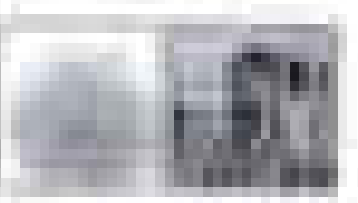
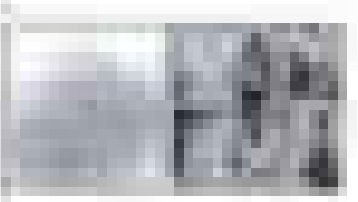
1. Write the name of the country shown in the picture.



2. Write the name of the country shown in the picture.



3. Write the name of the country shown in the picture.



4. Write the name of the country shown in the picture.

5. Write the name of the country shown in the picture.

6. Write the name of the country shown in the picture.



THE UNIVERSITY OF CHICAGO PRESS



