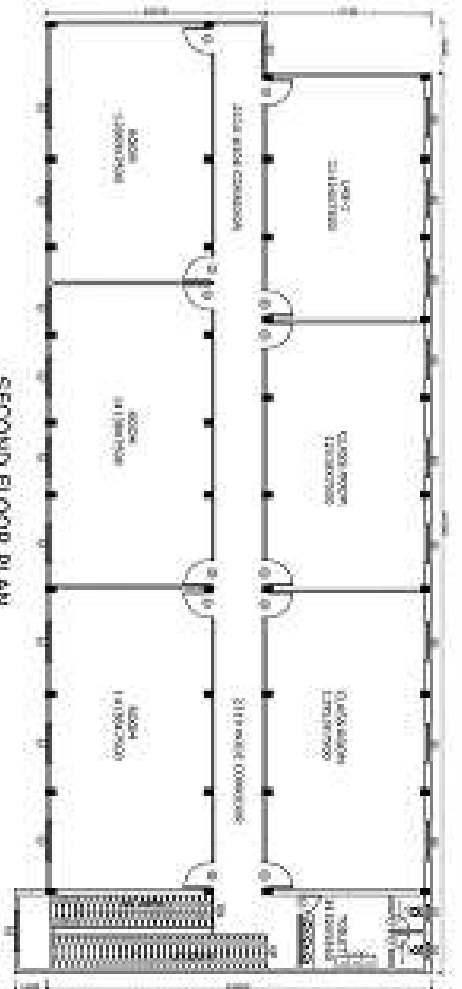
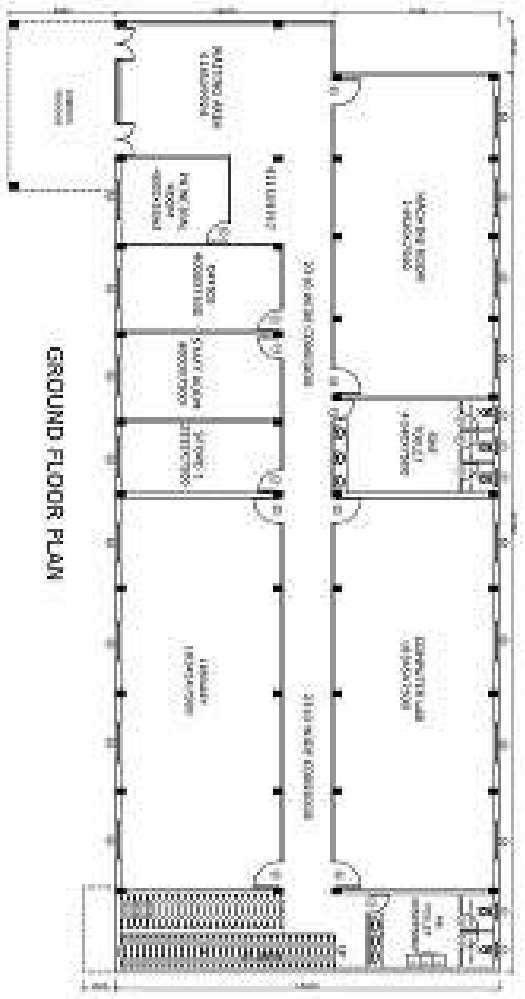


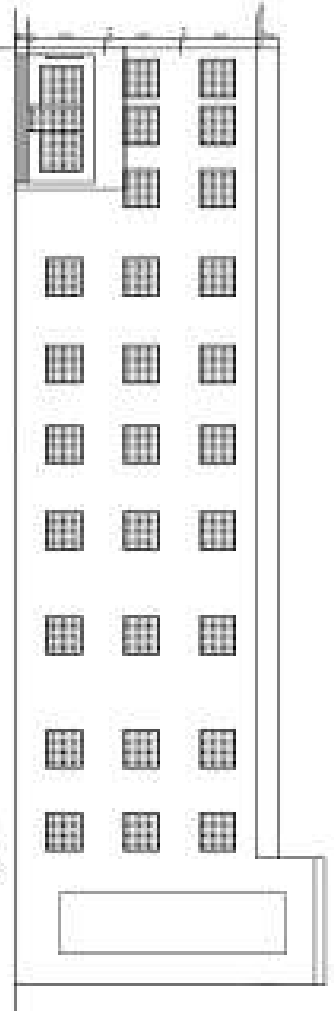
FIRST FLOOR PLAN



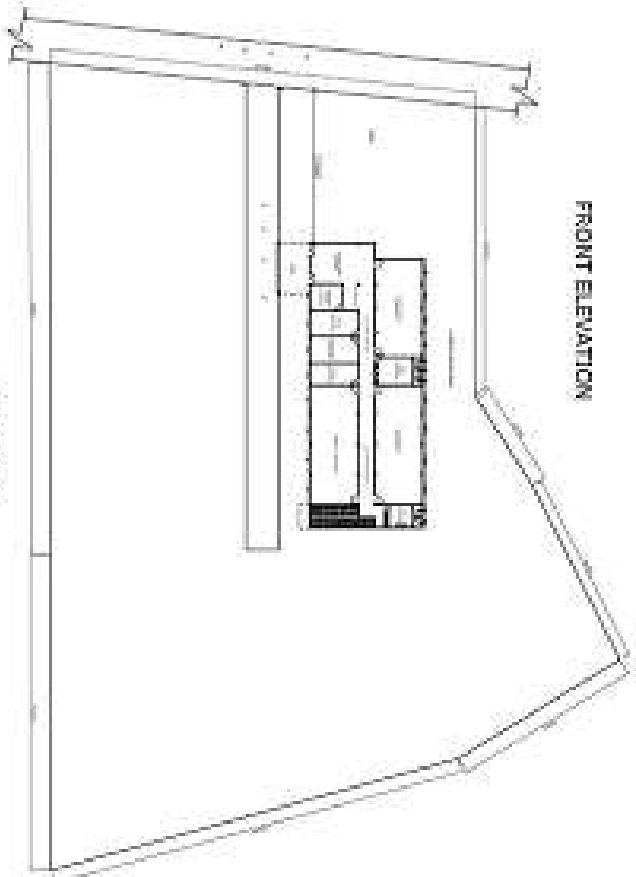
SECOND FLOOR PLAN



GROUND FLOOR PLAN



FRONT ELEVATION



SITE PLAN

ALL DIMENSION ARE IN MM.

BUILDING PLAN FOR DEV PARAMEDICAL
 INSTITUTE OF MEDICAL SCIENCE ON GATA
 NO 301, AT SARAI BHINSEN, MANDHATA,
 DISTRICT PRATAPGAH (U.P.)

AREA STATEMENT
 TOTAL LAND AREA = 7836.43 SQM
 COVERED GROUND FLOOR PLAN = 830.74 SQM
 COVERED FIRST FLOOR PLAN = 791.25 SQM
 COVERED SECOND FLOOR PLAN = 791.25 SQM
 UNITS AREA = 53.86 SQM



SCALE
 1:1.5

OWNER

ARCHITECT