

**OWNER'S DETAIL**

PROPOSED DRAWING FOR "BACHELOR LAL JASWAL MAHA VIDYALAYA, COLLEGE OF PHARMACY" SITUATED AT VILLAGE - SAHERGA, VISHWANATH GANJ, PARLIANNA & THISEL - SAODAK, DIST. PRATAPGARH (U.P.) PLOT NO. - 41, 42, 43, 44, 45, 46, 47, 48.

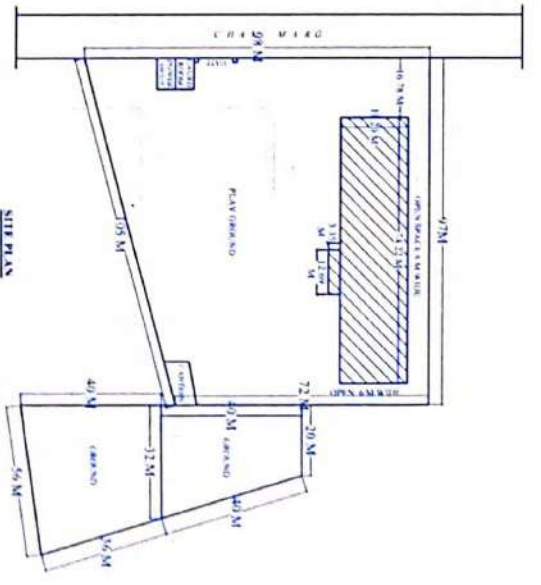
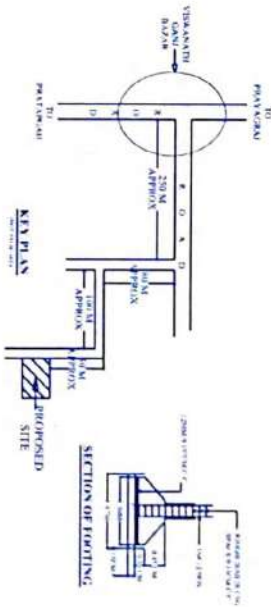
**FIRE FITTINGS**

**FIRE EXTINGUISHER (E)**

**HOSE REEL**

**WATER TANK (10000 LTR)**

Sl	Model	Capacity	Pressure	Material	Remarks
1	4.5"	4000	4000	SS	For fire fighting
2	4.5"	4000	4000	SS	For fire fighting
3	4.5"	4000	4000	SS	For fire fighting



**FOR OFFICE USE ONLY**

Sl	Model	Capacity	Pressure	Material	Remarks
1	4.5"	4000	4000	SS	For fire fighting
2	4.5"	4000	4000	SS	For fire fighting
3	4.5"	4000	4000	SS	For fire fighting

**AREA DETAIL**

TOTAL AREA OF PLOT = 10940.00 Sqm

OPEN AREA OF PLOT = 956.96 Sqm

COVERED AREA OF GROUND FLOOR = 1407.53 Sqm

COVERED AREA OF FIRST FLOOR = 1407.53 Sqm

COVERED AREA OF SECOND FLOOR = 1407.53 Sqm

TOTAL COVERED AREA = 4223.02 Sqm

**SCALE**

SCALE OF DOOR/WINDOW = 1:10

SCALE OF WALL = 1:20

SCALE OF SITE PLAN = 1:50

**OWNER'S SIGN**

**ER. S. P. Tripathi**  
 Chartered Engineer  
 (R. No. 435705531210)  
 Member of Institution of Engineer's  
 (R. No. A-12876)  
 Govt. Approved Valuers  
 (R. No. 2993)

Bachelor Lal Jaiswal Mahavidyalaya  
 (A College of Pharmacy)  
 Saharna, Vidhansabha, Prayagraj