

AMAN COLLEGE OF PHARMACY

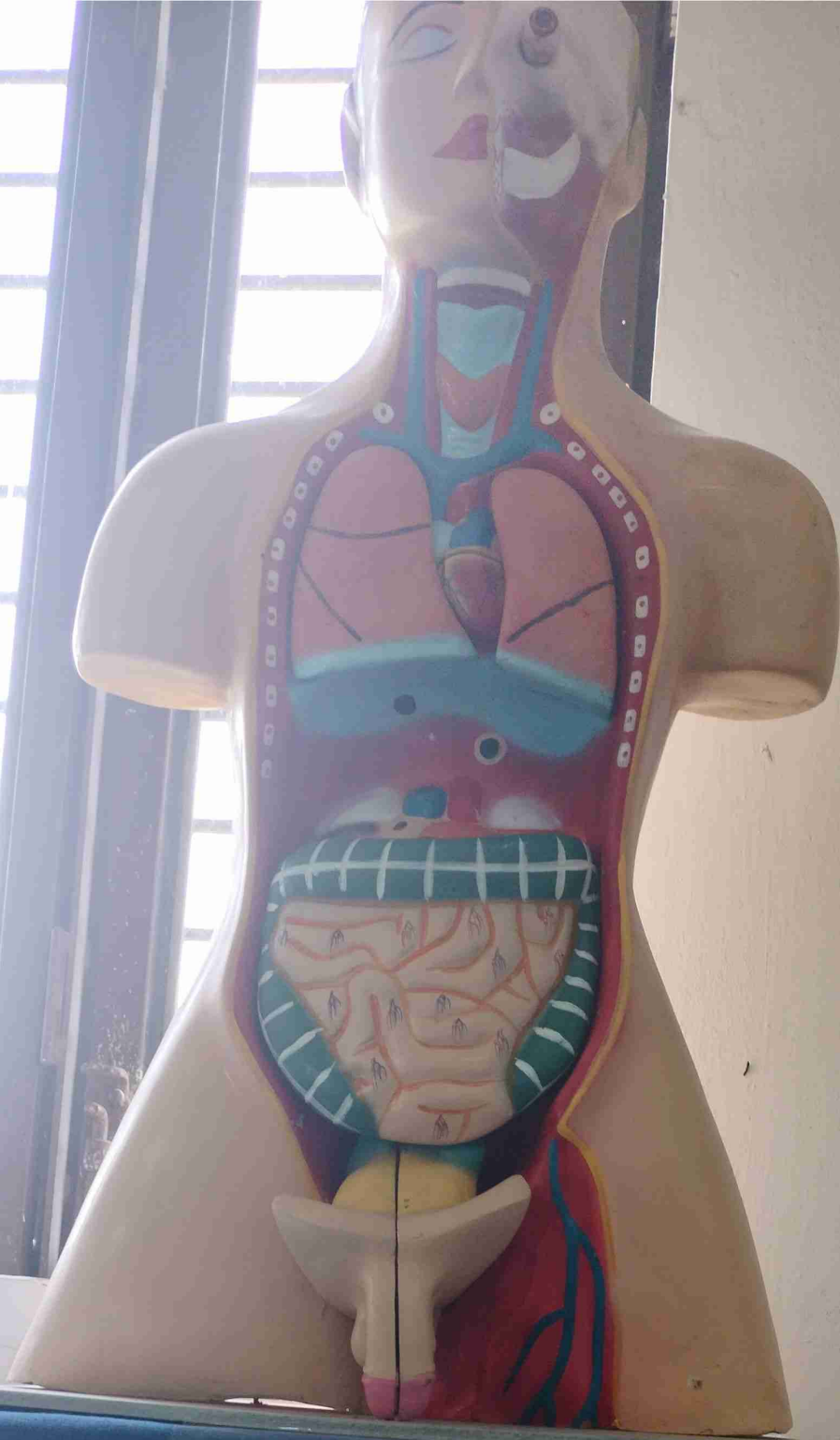




Centrifuge



Magnetic Stirrer



Male Torso Half

SOP FOR OPERATION AND CLEANING OF COATING PAN

SOP FOR OPERATION AND CLEANING OF COATING PAN

- 1.0 **OBJECTIVE:-** To lay down a Procedure for operation and cleaning of Coating Pan.
- 2.0 **SCOPE:-** This SOP is applicable for operation and cleaning of Coating Pan.
- 3.0 **RESPONSIBILITY:-** Production Chemist
- 4.0 **ACCOUNTABILITY:-** Production Manager

5.0 **PROCEDURE:**

5.1 **OPERATIONAL PROCEDURE:-**

- 5.1.1 Load weighted quantity of uncoated tablets from the container into the coating pan.
- 5.1.2 Switch on the mains of Coating pan, Exhaust system and Hot air blowers.
- 5.1.3 Ensure the Work and effectiveness of exhaust system and hot air blowers.
- 5.1.4 Arrange the position of hot air blowers and exhaust pipes.
- 5.1.5 Carry out coating operation as per the standard procedure laid down in the product BMR
Following parameters must be strictly adhered to :
- Required temperature of the bed.
 - Compressed air pressure.
 - Rate of atomizing air pressure.
 - Exhaust system.
 - Spray pattern
- 5.1.6 After completion of coating, check laid down physical parameters of coated tablets as per the laid down procedure in the product BMR
- 5.1.7 Remove the coated tablets from the pan into polythene lined containers with appropriate label affixed on them.

5.2 **DISMANTLING**

- 5.2.1 Switch off the mains of Hot air blowers, Exhaust system and Coating pan.
- 5.2.2 Remove Hot air blower pipes and Exhaust pipes.

5.3 **CLEANING PROCEDURE:**

5.3.1 **Materials required:-**

- coating pan
- SLS (0.1 % solution)
- Water (tap/ d.m.)

- 5.3.2 As soon as the coating operation is over, transfer the coated tablets in suitable containers; transfer the dry powder from the pan, if any.
- 5.3.3 Pour sufficient potable water into the pan and allow the pan to rotate for about 10 minutes. Remove this turbid water and transfer it into a container. Clean the inner surface of the pan with lint free cloth.
- 5.3.2 Again add sufficient amount of potable water and add 10 ml SLS solution into the pan and allow the pan to rotate for about 10 minutes. Remove this turbid water and transfer it into a container. Clean the inner surface of the pan with lint free cloth.
- 5.3.3 Place about sufficient amount of potable water into the pan. Allow the pan to rotate and continue to clean the inner surface of the pan till the washings are not soapy to hands.
- 5.3.4 Remove the water and rinse with fresh DM water and dry it by using lint free cloth.
- 5.3.5 Affix "cleaned" status label to the coating pan.
- 5.3.6 Record the cleaning data in Machine Log Book.
- 5.3.7 Intimate QA to collect rinse water/ wash water for analysis.
- 5.3.8 Do not proceed until QA gives clearance for production.

MUSEUM

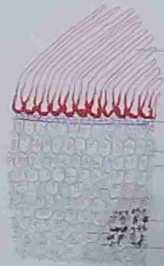
T.S. OF NUX-VOMICA SEED



Nuxvomica Plant



Seed



Lignified Trichomes

Paracortical

Endosperm

Aleurone

Plasma

Oil Cell

T.S. OF NUX-VOMICA SEED

T.S. OF MERICARP FENNEL FRUIT



Fennel Plant

Primary Ridge

Epicarp

Vascular Bundle

Mesocarp

Endosperm

A wooden shelving unit containing various items:

- Top shelf: Several boxes of medicine, including 'CLADUS', 'NOVA', and 'SURGICARE'.
- Second shelf: Three glass jars containing dried plant material, a yellow and black striped container, and a blue box with a syringe illustration.
- Third shelf: Four pink plastic containers, several bottles, and a large blue box labeled 'NOVA'.
- Bottom shelf: A blue plastic case, several boxes, and bottles.



DISINTEGRATION TEST APPARATUS (Single Test)



MAINS

HEATER ON

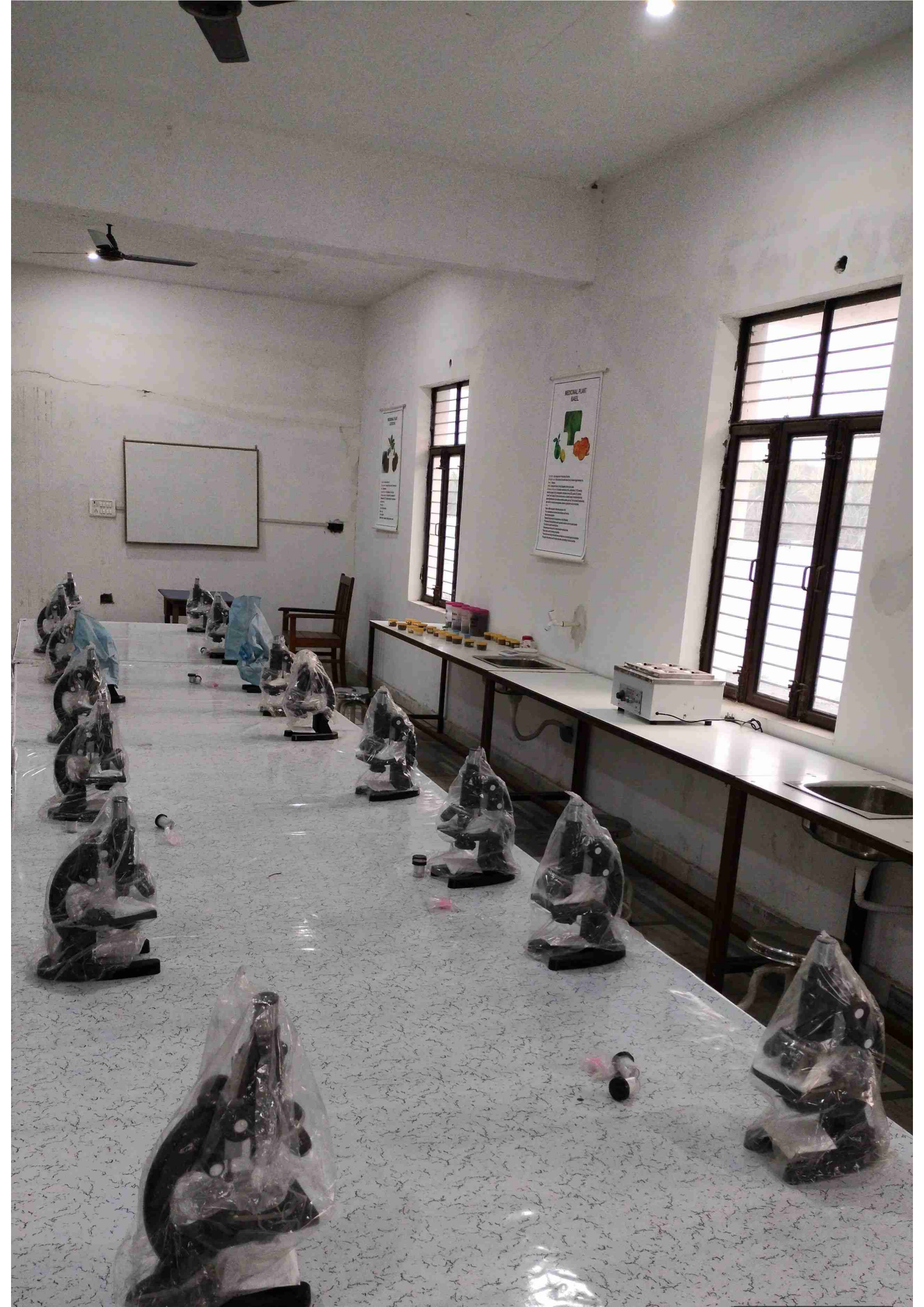


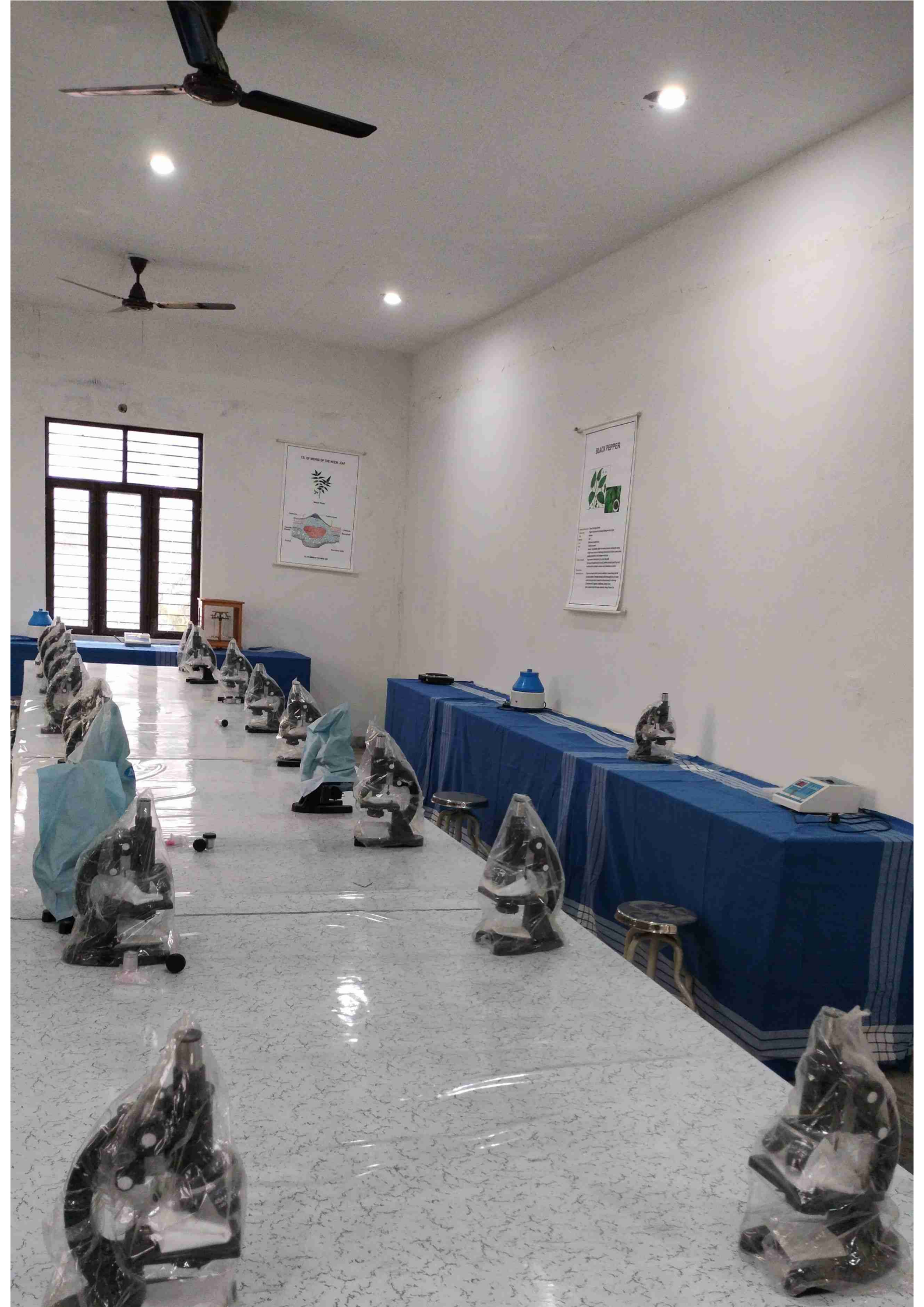
TEMPERATURE CONTROLLER



MOTOR

DISINTEGRATION
TEST
APPARATUS





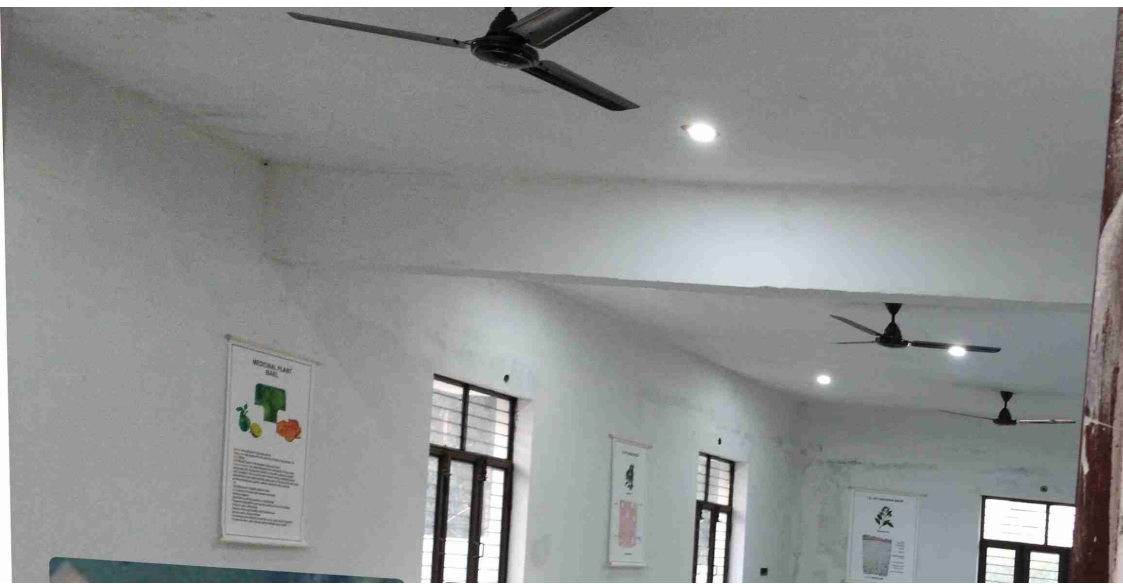


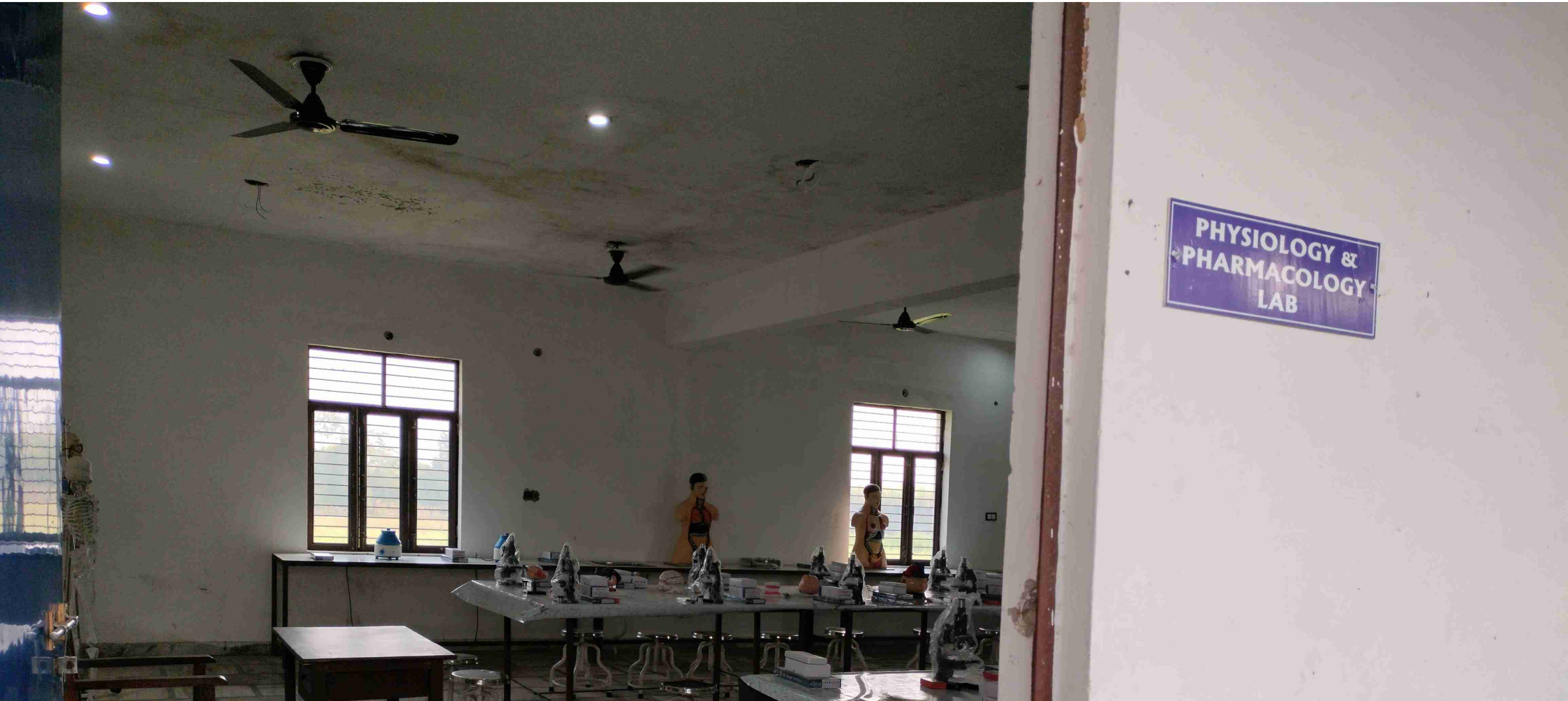


**PHARMACY
PRACTICE LAB**



**PHARMACOGNOSY
LAB**





PHYSIOLOGY &
PHARMACOLOGY
LAB

**PHARMACEUTICS
LAB**



PHARMACEUTICAL
CHEMISTRY LAB



MACHINE ROOM



BOTTLE FILLING MACHINE

Operation and Cleaning of Bottle Filling Machine.

- 1) **PURPOSE** To lay down a Procedure for Operation and Cleaning of Bottle Filling Machine
- 2) **RESPONSIBILITY** Q/C Manager
- 3) **ACCOUNTABILITY** Production Manager/ Q.A. Manager
- 4) **SCOPE** The procedure of this SOP shall be applicable to production Department of Herbal Biotek Pvt. Ltd, Karur.

5) **PROCEDURE**

MACHINE NAME	Bottle Filling Machine	M/C No.
--------------	------------------------	---------

The entire Machine Operation & Cleaning procedure is divided in three stages

- 1) Pre-operative Cleaning & Setting
- 2) Operation
- 3) Post Operation Cleaning and equipment preparation

STAGE - I

- 1) The exterior of the machine is cleaned with dry cloth
- 2) The electrical connections are checked by pulling the plug top into the socket.
- 3) The "MACHINE READY FOR USE" sticker is removed and attached the cleaning product Wash No. also to put on the top cover of the machine.
- 4) The filling syringe (from upper stand) with the filling medium is cleaned by 2 M.L water
- 5) Empty glass bottle kept near the filling machine



COATING PAN

MAIN [Dial: 0 1 2 3 4 5 6 7 8 9 10] BLOWER

ELCOP

SOP FOR OPERATION AND CLEANING OF COATING PAN

SOP FOR OPERATION AND CLEANING OF COATING PAN

1.0 OBJECTIVE: To lay down a procedure for operation and cleaning of Coating Pan.

2.0 SCOPE: This SOP is applicable for operation and cleaning of Coating Pan.

3.0 RESPONSIBILITY: Production Operator

4.0 ACCOUNTABILITY: Production Manager

5.0 PROCEDURE

5.1 PRELIMINARY PROCEDURE:

5.1.1 Check the level of material in the Coating Pan.

5.1.2 Check the level of material in the Coating Pan.

5.1.3 Check the level of material in the Coating Pan.

5.1.4 Check the level of material in the Coating Pan.

5.1.5 Check the level of material in the Coating Pan.

5.1.6 Check the level of material in the Coating Pan.

5.1.7 Check the level of material in the Coating Pan.

5.1.8 Check the level of material in the Coating Pan.

5.1.9 Check the level of material in the Coating Pan.

5.1.10 Check the level of material in the Coating Pan.

5.2 CLEANING PROCEDURE:

5.2.1 Turn off the main power switch.

5.2.2 Turn off the blower power switch.

5.2.3 Turn off the main power switch.

5.2.4 Turn off the blower power switch.

5.2.5 Turn off the main power switch.

5.2.6 Turn off the blower power switch.

5.2.7 Turn off the main power switch.

5.2.8 Turn off the blower power switch.

5.2.9 Turn off the main power switch.

5.2.10 Turn off the blower power switch.