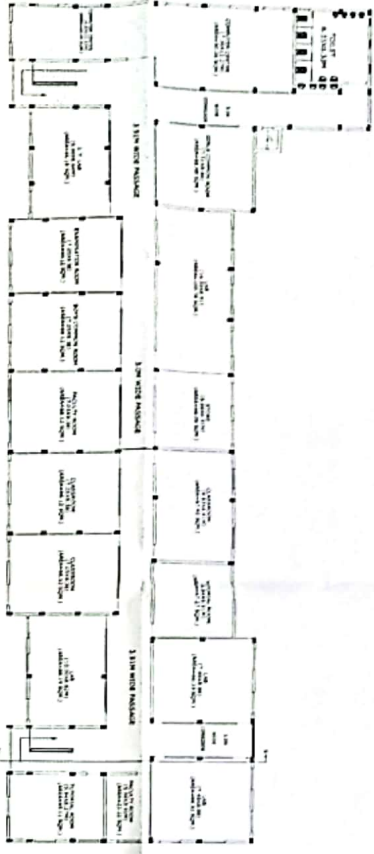
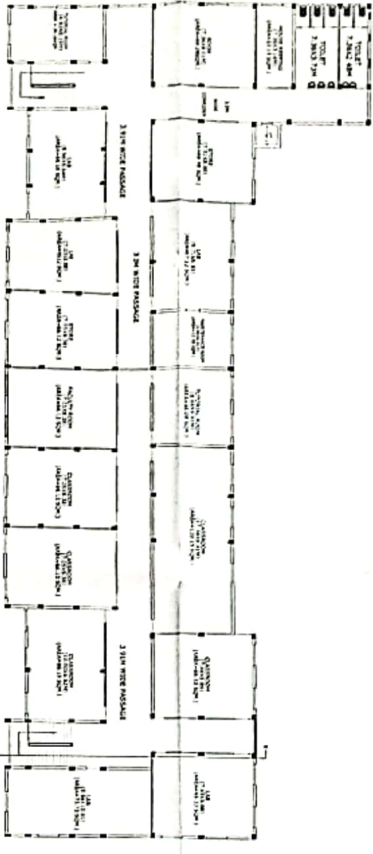


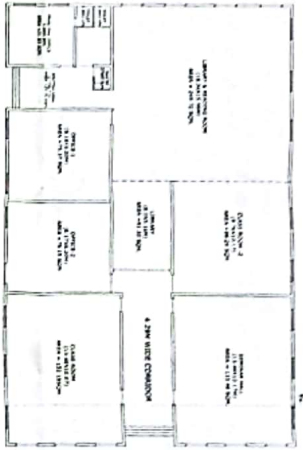
GROUND FLOOR PLAN
BLOCK A - (SCALE :- 1:100)



FIRST FLOOR PLAN
BLOCK A - (SCALE :- 1:100)



SECOND FLOOR PLAN
BLOCK A - (SCALE :- 1:100)



GROUND FLOOR PLAN
BLOCK B - (SCALE :- 1:100)

PLAN OF BANARAS INSTITUTE
OF PHARMACY EDUCATION
BUILDING OVER
ARAZI NO. - 625
VILLAGE- GAJOKHAR
PARGANA- KOLASLA
POST- PARSARA,
DIST.- VARANASI

DRAWING TITLE:-

FLOOR PLANS

OWNER:-

PURWANCHAL EDUCATIONAL
TRUST

OWNER SIGN. ARCHITECT SIGN.



Professional Engineer's
Signature

Professional Engineer's
Signature



DRG.NO. :-

DATE

SCALE

1:100, 1:200