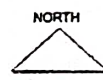
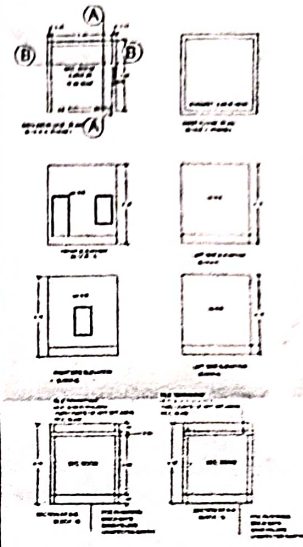


ENGINEER'S PROPOSED BUILDING PLAN ON
 PLOT NO. 107, PHASE II, 107TH LAND
 MEASURED UP TO 231 ACRES 11 1/2 SQ. MTS.
 SITUATED IN VILLAGE 2076, 75th, 107th
 DISTRICT, PHOENIX, AZ 85018
 BY ENGINEER TO
 DEFEND THE INTERESTS OF PROPRIETOR

OWNER BY
 PHOENIX TRUST COMPANY, PHOENIX, ARIZONA
 VILLAGE 2076, DISTRICT 75th, 107th



DETAIL OF AREA
 TOTAL FLOOR AREA = 88,000 SQ. FT. (8,000 SQ. MTS.)
 PERM. F.A. @ 10% = 8,800 SQ. FT. (800 SQ. MTS.)
 PERM. COVD AREA @ 13% AT G FLOOR = 11,440 SQ. FT. (1,050 SQ. MTS.)
 EXISTING COVD AREA AT G FLOOR (A-B-C) = 11,440 SQ. FT. (1,050 SQ. MTS.)
 % COVD = 13%

BLOCK-B	= 8,000 SQ. FT. (740 SQ. MTS.)	= 800 SQ. FT. (74 SQ. MTS.)
BLOCK-C	= 2,000 SQ. FT. (185 SQ. MTS.)	= 200 SQ. FT. (18.5 SQ. MTS.)
TOTAL EXISTING COVD AREA AT G FLOOR (A-B-C)	= 10,000 SQ. FT. (925 SQ. MTS.)	= 1,000 SQ. FT. (92.5 SQ. MTS.)
PERM. COVD AREA AT G FLOOR (BLOCK-A-B)	= 1,440 SQ. FT. (133 SQ. MTS.)	= 133 SQ. FT. (12.3 SQ. MTS.)
EXISTING COVD AREA AT G FLOOR (BLOCK-A-B)	= 1,440 SQ. FT. (133 SQ. MTS.)	= 133 SQ. FT. (12.3 SQ. MTS.)
BLOCK-A SAME AS G F	= 11,000 SQ. FT. (1,015 SQ. MTS.)	= 1,100 SQ. FT. (101.5 SQ. MTS.)
TOTAL EXISTING COVD AREA AT G FLOOR	= 21,000 SQ. FT. (1,935 SQ. MTS.)	= 2,100 SQ. FT. (193.5 SQ. MTS.)
PROP. COVD AREA AT G FLOOR (BLOCK-A)	= 11,440 SQ. FT. (1,050 SQ. MTS.)	= 1,050 SQ. FT. (96.5 SQ. MTS.)
TOTAL PROP. COVD AREA AT G FLOOR	= 11,440 SQ. FT. (1,050 SQ. MTS.)	= 1,050 SQ. FT. (96.5 SQ. MTS.)
TOTAL COVD AREA AT G FLOOR (EXIST + PROP)	= 22,440 SQ. FT. (2,085 SQ. MTS.)	= 2,085 SQ. FT. (192.5 SQ. MTS.)
PERM. COVD AREA AT G FLOOR (BLOCK-A)	= 11,440 SQ. FT. (1,050 SQ. MTS.)	= 1,050 SQ. FT. (96.5 SQ. MTS.)
PERM. COVD AREA AT G FLOOR (BLOCK-B)	= 11,440 SQ. FT. (1,050 SQ. MTS.)	= 1,050 SQ. FT. (96.5 SQ. MTS.)
BLOCK-A	= 11,000 SQ. FT. (1,015 SQ. MTS.)	= 1,100 SQ. FT. (101.5 SQ. MTS.)
TOTAL EXISTING COVD AREA AT ALL FLOORS	= 32,440 SQ. FT. (2,995 SQ. MTS.)	= 2,995 SQ. FT. (276.5 SQ. MTS.)
TOTAL PROP. COVD AREA AT ALL FLOORS	= 11,440 SQ. FT. (1,050 SQ. MTS.)	= 1,050 SQ. FT. (96.5 SQ. MTS.)
TOTAL COVD AREA AT ALL FLOORS (EXIST + PROP)	= 43,880 SQ. FT. (4,045 SQ. MTS.)	= 4,045 SQ. FT. (373.5 SQ. MTS.)
ACHIEVED P.A.R.	= 7101 SQ. FT. (653 SQ. MTS.)	= 653 SQ. FT. (60.3 SQ. MTS.)

DETAIL OF AREA	
PERM. F.A. @ 10%	= 8,800 SQ. FT. (800 SQ. MTS.)
PERM. COVD AREA @ 13%	= 11,440 SQ. FT. (1,050 SQ. MTS.)
EXISTING COVD AREA @ 13%	= 11,440 SQ. FT. (1,050 SQ. MTS.)
TOTAL COVD AREA @ 13%	= 22,880 SQ. FT. (2,100 SQ. MTS.)
ACHIEVED P.A.R.	= 7101 SQ. FT. (653 SQ. MTS.)

Handwritten notes and signatures in the bottom right corner, including a date of 12/1/18 and a signature that appears to be 'A. K. ...'. There is also a circular stamp with the number '17' and the text 'SHEET NO.'.

SECRETARY
 Phoenix Trust Company
 107th Land

Handwritten notes and signatures at the very bottom right, including a signature and the text 'SHEET NO.'.

