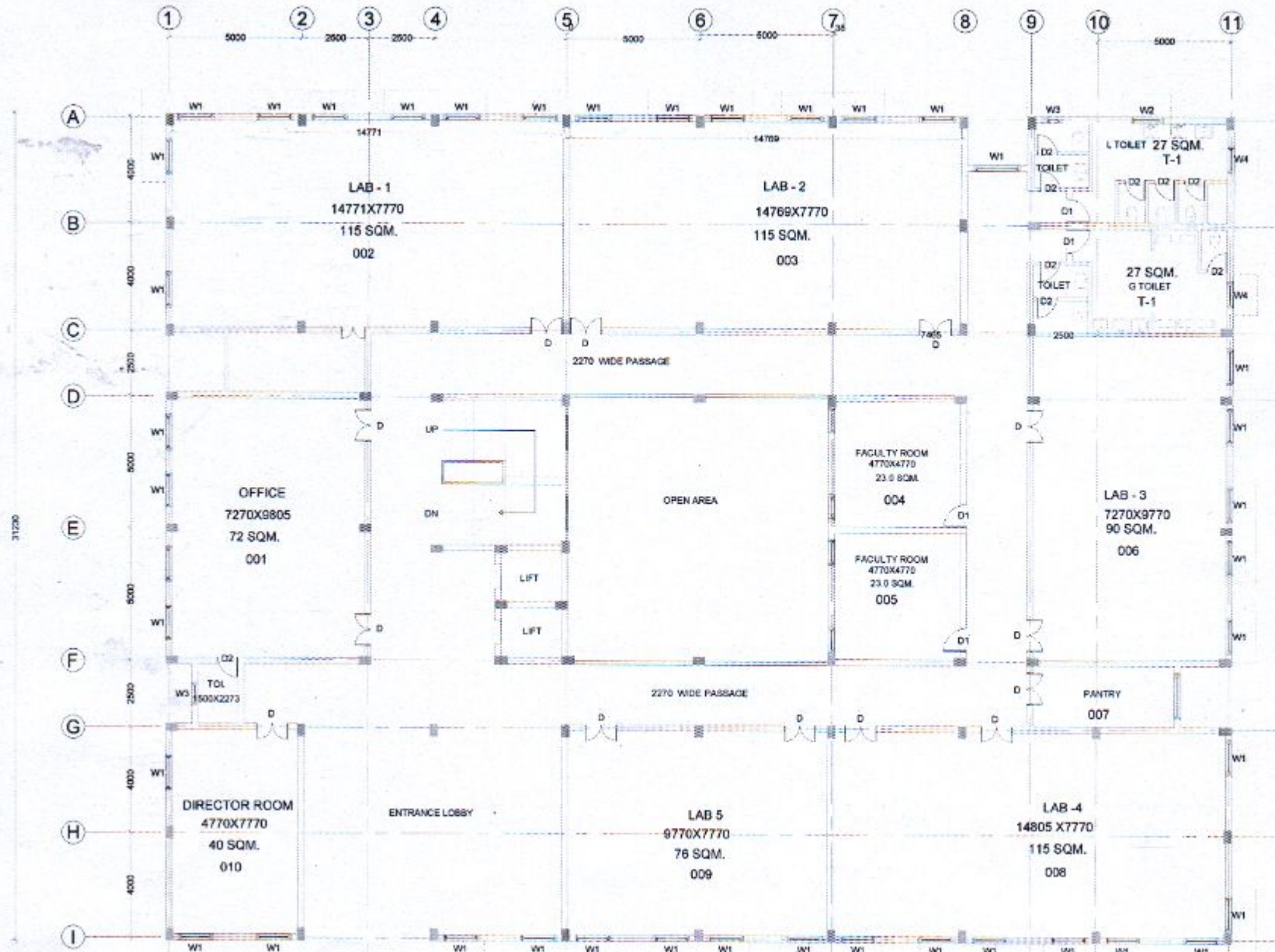


**SHRI GANPATI
EDUCATIONAL SOCIETY
GHAZIABAD**

PROJECT

SHRI GANPATI INSTITUTE OF
TECHNOLOGY
VILL. PARSON 1 KM. FROM
MASURI KANAL
OPP. JINDAL PIPES LTD.
SITUATED ON N.H.-24,
DISTRICT- GHAZIABAD (UP)



*AR KUMAR ABHISHEK
CA/2010/49581*

TOTAL AREA	: 1145.03 SQ M.
DRG NO.	: MSA420/01
SCALE	: NTS
DATE	: 13-07-2013
DRAWN BY	: R KANDAR

**TITLE:
GROUND FLOOR PLAN**

SUB TITLE:
PHARMACY BLOCK LAYOUT PLAN

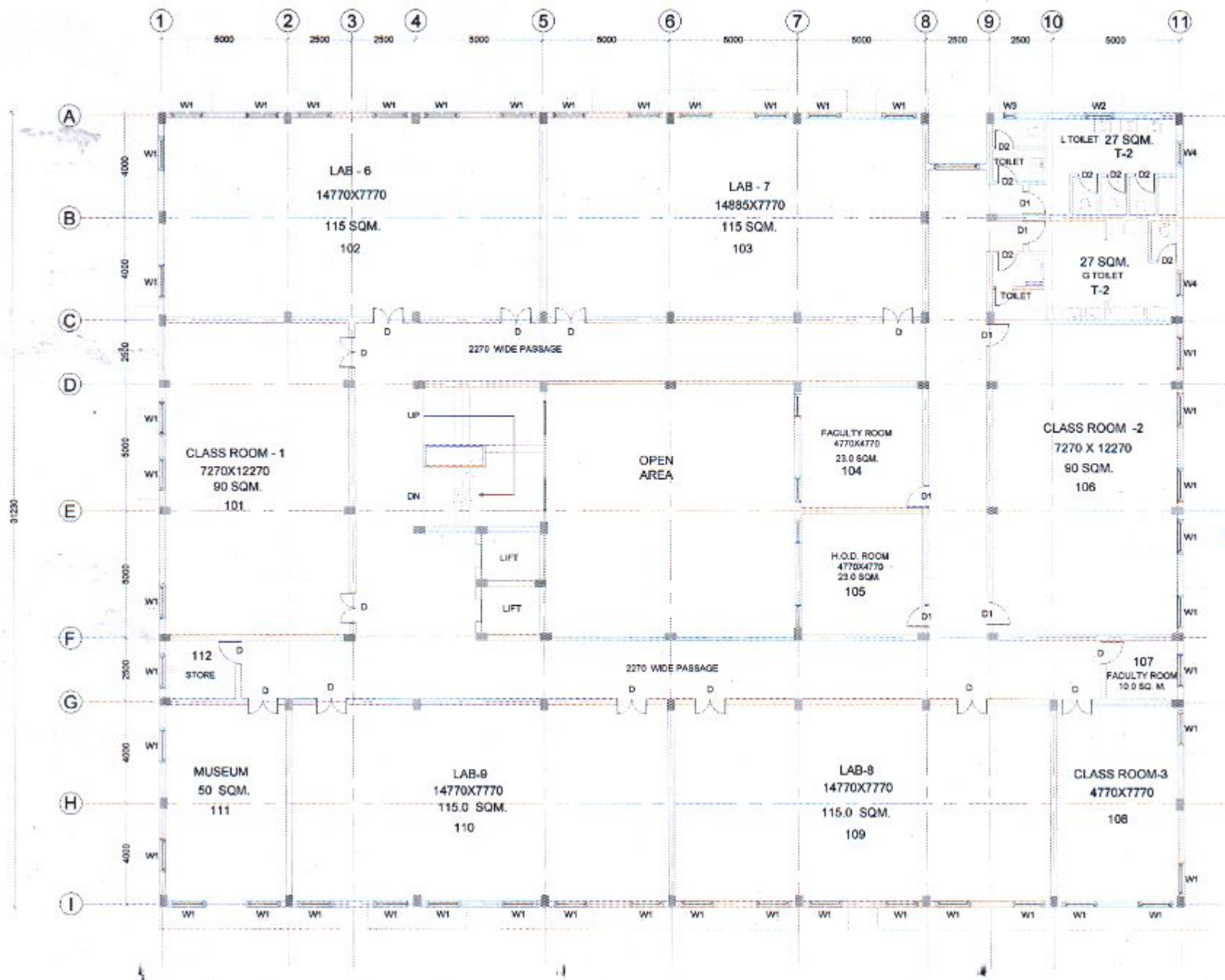
ARCHITECTS:
LINE & FORM
ARCHITECTS SERVICES (P) LTD.
B-43, Soami Nagar (Basement),
opposite Panchsheel Park
New Delhi - 110 017, India
Tel: +91 11 - 29014814,
Fax: +91 11 - 41745059

Mail: line_form@yahoo.com
www.lineandform.co.in

**SHRI GANPATI
EDUCATIONAL SOCIETY
GHAZIABAD**

PROJECT

SHRI GANPATI INSTITUTE OF
TECHNOLOGY
VILL. PARSON 1 KM. FROM
MASURI KANAL
OPP. JINDAL PIPES LTD.
SITUATED ON N.H.-24,
DISTRICT- GHAZIABAD (UP)



AR KUMAR ABHISHEK
CA/2010/49581

TOTAL AREA : 1145.03 SQ. M.

DRG. NO. : MBAA20.02

SCALE : NTS

DATE : 13-07-2013

DRAWN BY : R KANDARI

TITLE :

FIRST FLOOR PLAN

SUB TITLE :
PHARMACY BLOCK LAYOUT PLAN

ARCHITECTS :

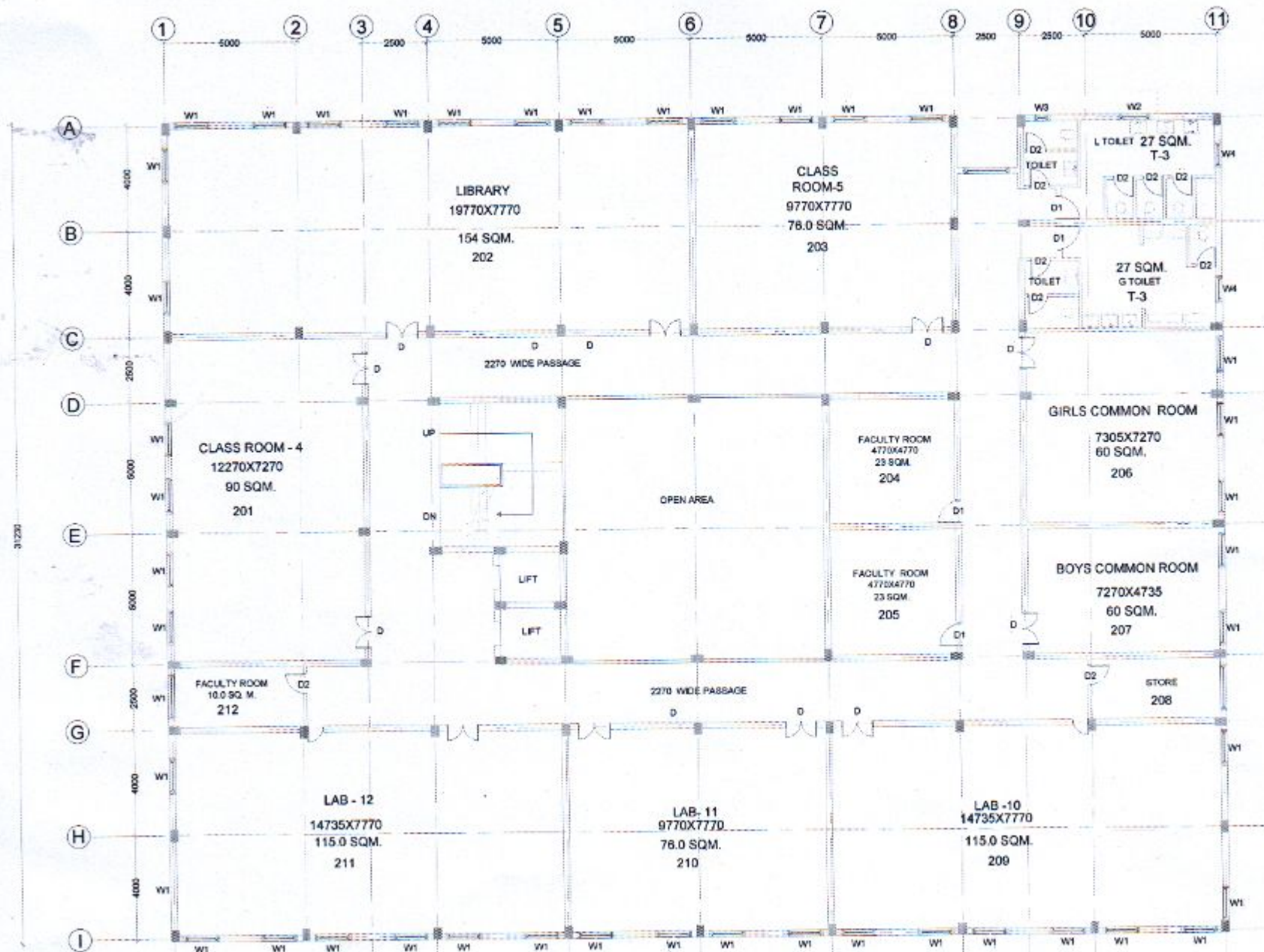
LINE & FORM
ARCHITECTS SERVICES (P) LTD.
B-43, Soami Nagar (Basement),
opposite Panchsheel Park
New Delhi - 110 017, India
Tel : +91 11 - 26014814,
Fax: +91 11 - 41745059

Mail : line_form@yahoo.com
www.lineandform.co.in

**SHRI GANPATI
EDUCATIONAL SOCIETY
GHAZIABAD**

PROJECT

SHRI GANPATI INSTITUTE OF
TECHNOLOGY
VILL. PARSON 1 KM. FROM
MASURI KANAL
OPP. JINDAL PIPES LTD.
SITUATED ON N.H.-24,
DISTRICT- GHAZIABAD (UP)



AR KUMAR ABHISHEK
CA/2010/49581

TOTAL AREA	: 1145.03 SQ. M.
DRG. NO. :	MSAA20.05
SCALE :	NTS
DATE :	15-07-2013

DRAWN BY : R KANDARI

TITLE:
SECOND FLOOR PLAN

SUB TITLE:
PHARMACY BLOCK LAYOUT PLAN

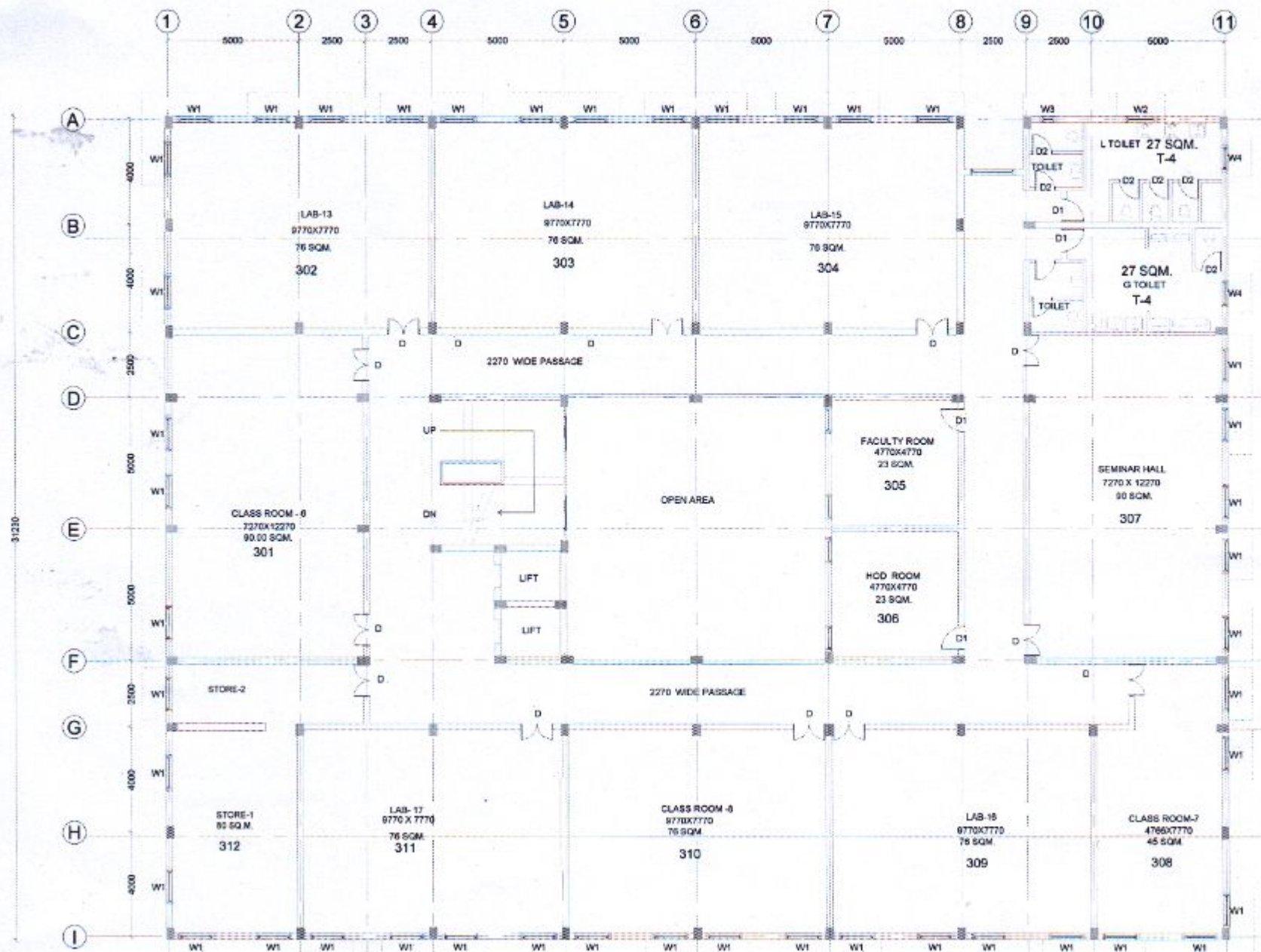
ARCHITECTS:
LINE & FORM
ARCHITECTS SERVICES (P) LTD.
B-43, Soami Nagar (Basement),
opposite Panchsheel Park
New Delhi - 110 017, India
Tel : +91 11 - 26014814,
Fax: +91 11 - 41745059

Mail : line_form@yahoo.com
www.lineandform.co.in

**SHRI GANPATI
EDUCATIONAL SOCIETY
GHAZIABAD**

PROJECT

SHRI GANPATI INSTITUTE OF
TECHNOLOGY
VILL. PARSON 1 KM. FROM
MASURI KANAL
OPP. JINDAL PIPES LTD.
SITUATED ON N.H.-24,
DISTRICT- GHAZIABAD (UP)



AR KUMAR ABHISHEK
CA/2010/49581

TOTAL AREA : 1145.03 SQ. M.

DRG. NO. : MBA/20.04

SCALE : NTS

DATE : 13-07-2013

DRAWN BY : R. KANDARI

TITLE :

THIRD FLOOR PLAN

SUB TITLE :

PHARMACY BLOCK LAYOUT PLAN

ARCHITECTS :



ARCHITECTS SERVICES (P) LTD.
B-43, Soami Nagar (Basement),
opposite Panchsheel Park
New Delhi - 110 017, India
Tel : +91 11 - 26014614,
Fax : +91 11 - 41745059

Mail : line_form@yahoo.com
www.lineandform.co.in