

कार्यालय जिला पंचायत, इलाहाबाद ।

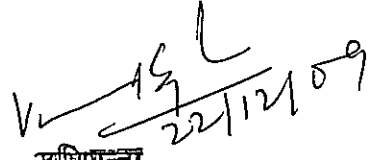
पत्रांक: 264 /निर्माण/2009-10

दिनांक:- 22-12-09

श्री विकास सिंह,
सचिव, विप्रज्ञान सेवा समिति,
459 सी पूरा दलेल अल्लापुर
इलाहाबाद ।

विषय:- प्रस्तावित ग्राम बेन्दौ तहसील करछना, जिला इलाहाबाद में प्रयाग इन्स्टीट्यूट ऑफ टेक्नॉलाजी एण्ड मैनेजमेन्ट मानचित्र स्वीकृति के सम्बन्ध में।

उपर्युक्त विषयक श्री विकास सिंह सचिव, विप्रज्ञान सेवा समिति द्वारा प्रस्तुत प्रार्थना पत्र व दिये गये प्रमाण पत्र पर भवन मानचित्र की स्वीकृति इस प्रतिबंध के साथ प्रदान की जाती है कि यदि आप द्वारा दिया गया प्रमाण पत्र असत्य पाया जाता है तो स्वीकृति स्वतः निरस्त हो जायेगी।


अभिष्यन्ता,
जिला पंचायत, इलाहाबाद ।

SCHEDULE OF COVERED AREA
A) ENGINEERING BUILDING BLOCK

- 1- COVERED AREA ON GROUND FLOOR = 1632.73Sq.m.
- 2- COVERED AREA ON FIRST FLOOR = 1572.05sq.m.
- 3- COVERED AREA ON SECOND FLOOR = 1572.05sq.m.
- 4- COVERED AREA ON THIRD FLOOR = 1572.05sq.m.

B) WORKSHOP BUILDING BLOCK

- 1- COVERED AREA ON GROUND FLOOR = 1337.99Sq.m.

C) M.B.A BUILDING BLOCK

- 1- COVERED AREA ON GROUND FLOOR = 1012.70Sq.m.

- 2- COVERED AREA ON FIRST FLOOR = 1012.70Sq.m.

- 3- COVERED AREA ON SECOND FLOOR = 1012.70Sq.m.

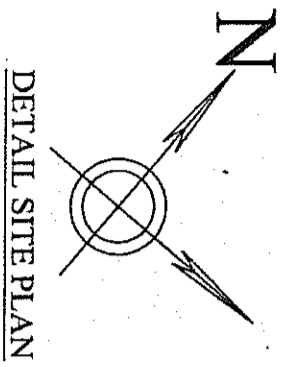
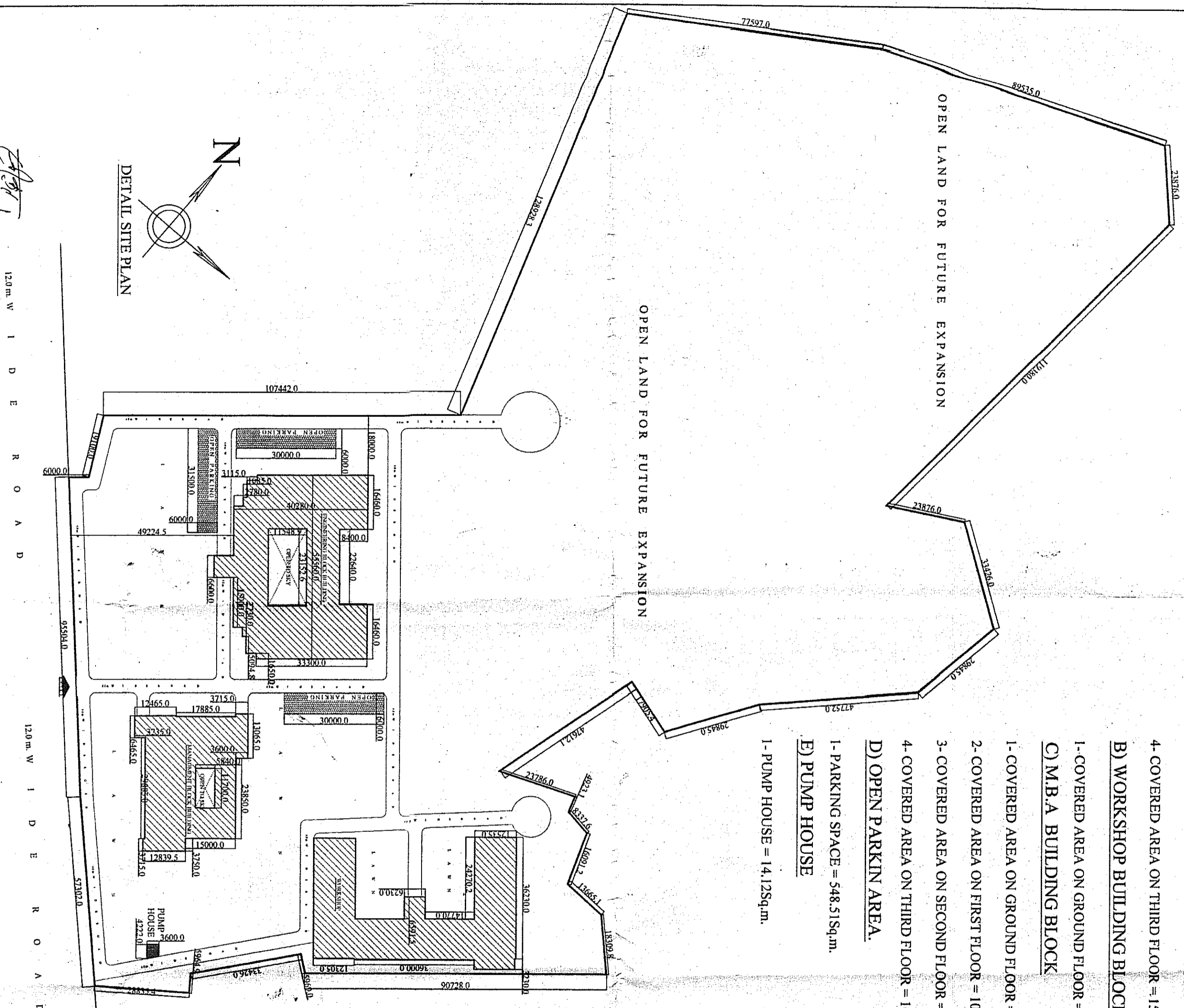
- 4- COVERED AREA ON THIRD FLOOR = 1012.70Sq.m.

D) OPEN PARKIN AREA.

- 1- PARKING SPACE = 548.51Sq.m.

E) PUMP HOUSE

- 1- PUMP HOUSE = 14.12Sq.m.



DETAIL SITE PLAN

विवाहा प्रचारक, काशीवाहा
 11/12/2019

ARCHITECT
PRATAP SINGH
 ARCHITECT
 PRAKASH SINGH ARCHITECTS
 CO.A.
 11/12/2019

ARCHITECT	PROJECT
SITE PLAN	ALL DIMENSIONS ARE IN MILLIMETER.
SCALE	1:100
PAPER	1kg m. 40

PROPOSED PRAVAG INSTITUTE OF TECHNOLOGY AND MANAGEMENT ON LAND PART- PORTION OF KHASERA BRINDAVI, KARCHHANA, ALLAHABAD, UTTAR PRADESH.
 VIRAGVYAN SEWA SAMITHI, 450-G, RAJRA DALEI, ALLAHAPUR, ALLAHABAD, UP.

CONSULTANCY
DESIGNER DESK
 ARCHITECT: **Pratap Singh**
 H. K. SINGH

