

**AREA STATEMENT**

PLOT AREA = 10380.00 SQ.M (111937.96 SQ.FT)  
 PERMISSIBLE GROUND COVERAGE(85%) = 8823.00 SQ.M (95129.82 SQ.FT)  
 PERMISSIBLE F.A.R (2.0) = 20760.00 SQ.M (22875.92 SQ.FT)  
 1. COVERED AREA ON GROUND FLOOR = 2079.77 SQ.M (22866.64 SQ.FT)  
 2. COVERED AREA ON FIRST FLOOR = 2018.56 SQ.M (21777.50 SQ.FT)  
 3. COVERED AREA ON SECOND FLOOR = 2018.56 SQ.M (21777.50 SQ.FT)  
 4. COVERED AREA ON THIRD FLOOR = 2018.56 SQ.M (21777.50 SQ.FT)  
 5. TOTAL COVERED AREA FOR F.A.R. = 8135.45 SQ.M (87868.15 SQ.FT)  
 6. TOTAL COVERED AREA FOR F.A.R. = 8228.29 SQ.M (89888.75 SQ.FT)  
 COVERED AREA ON GROUND FLOOR OF PHARMACY BLOCK (22386.64 SQ.FT)  
 WHICH IS LESS THAN PERMISSIBLE GROUND COVERAGE

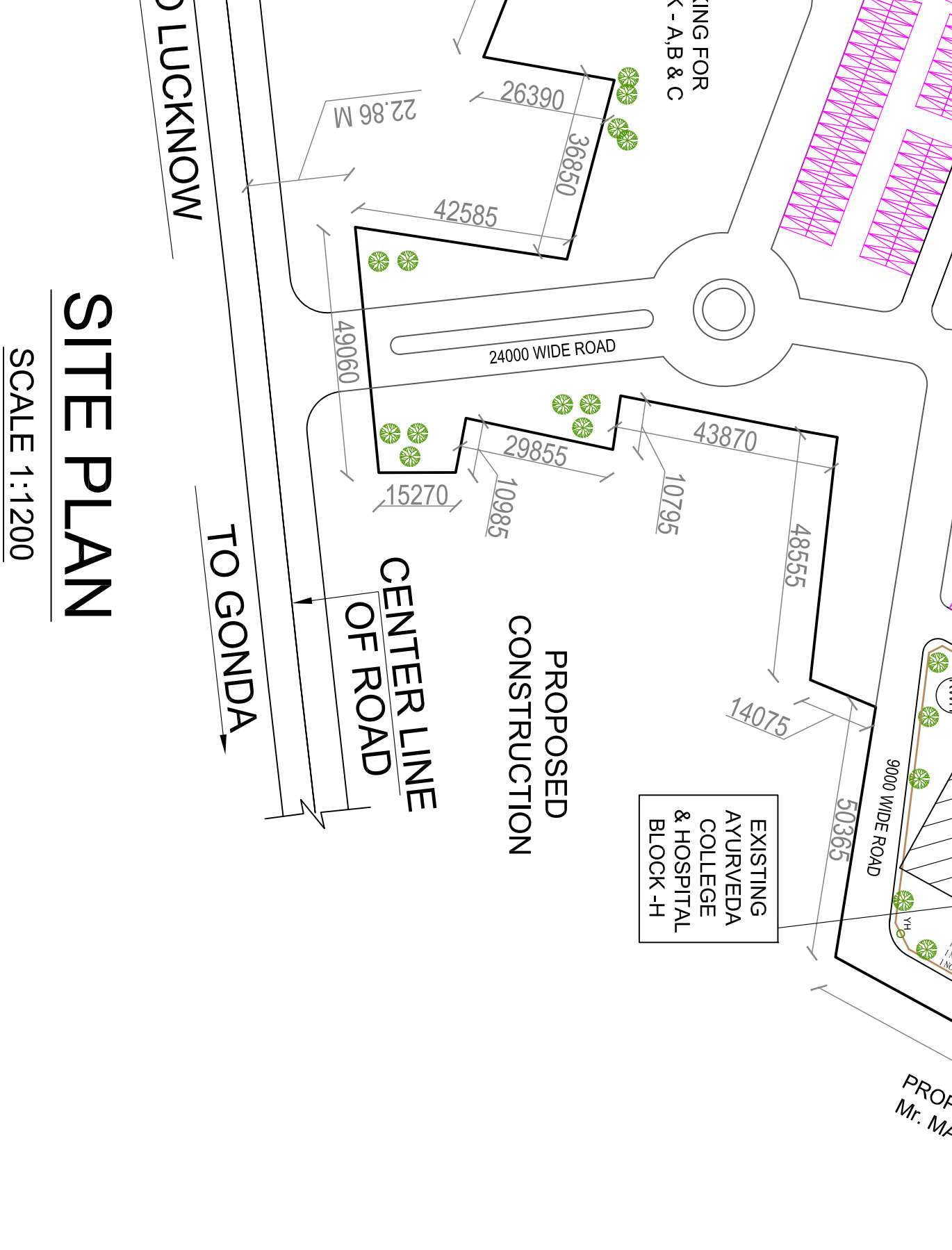
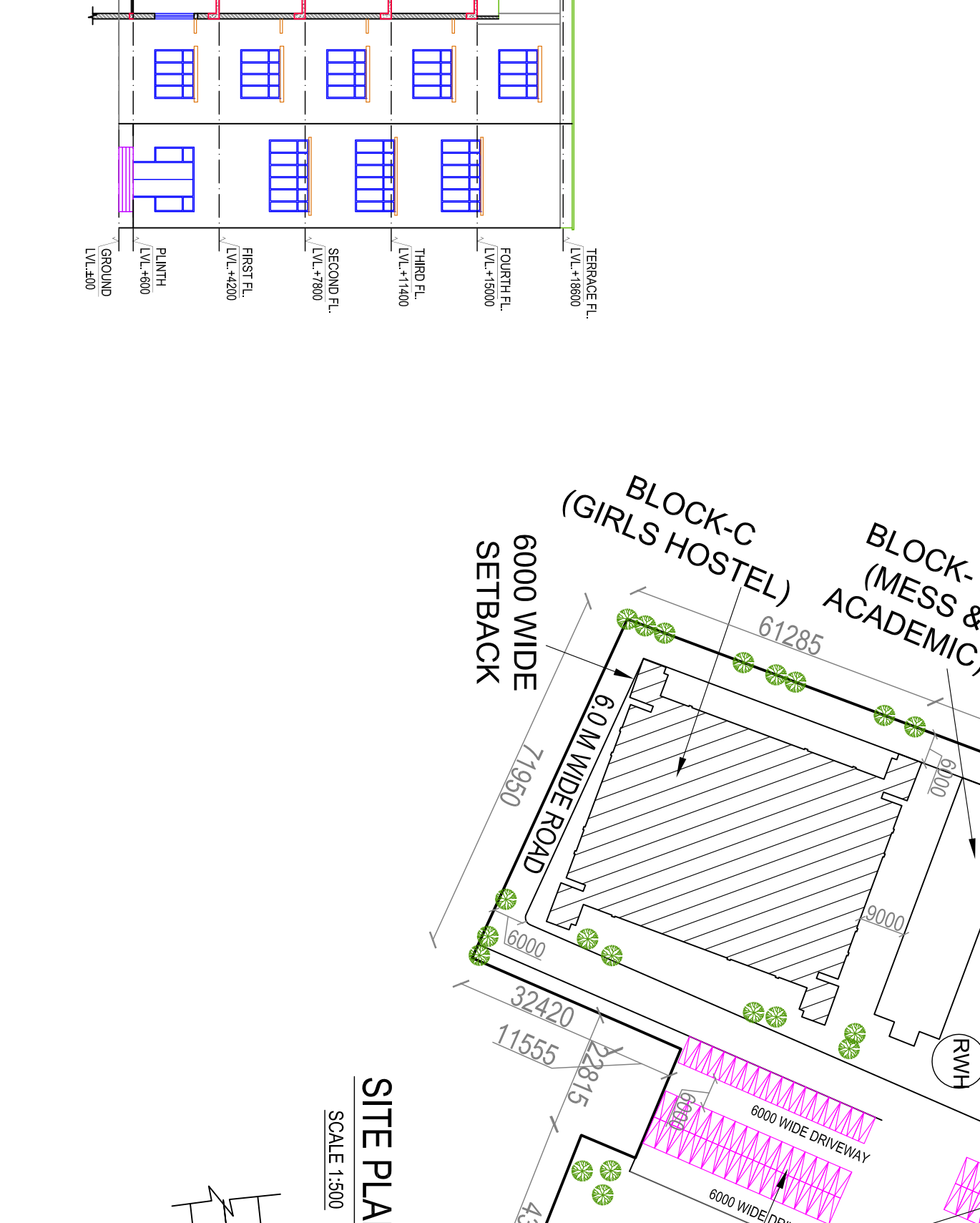
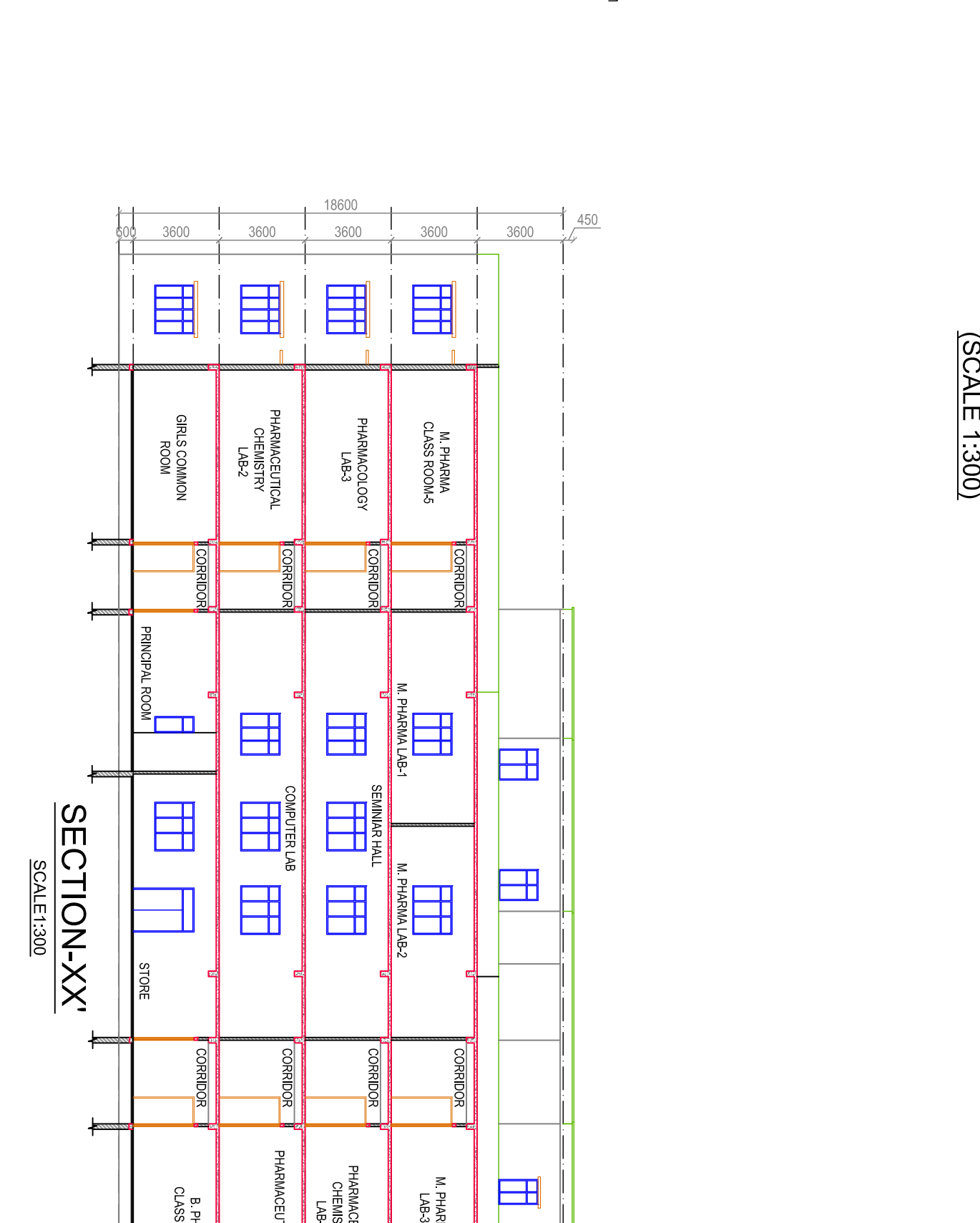
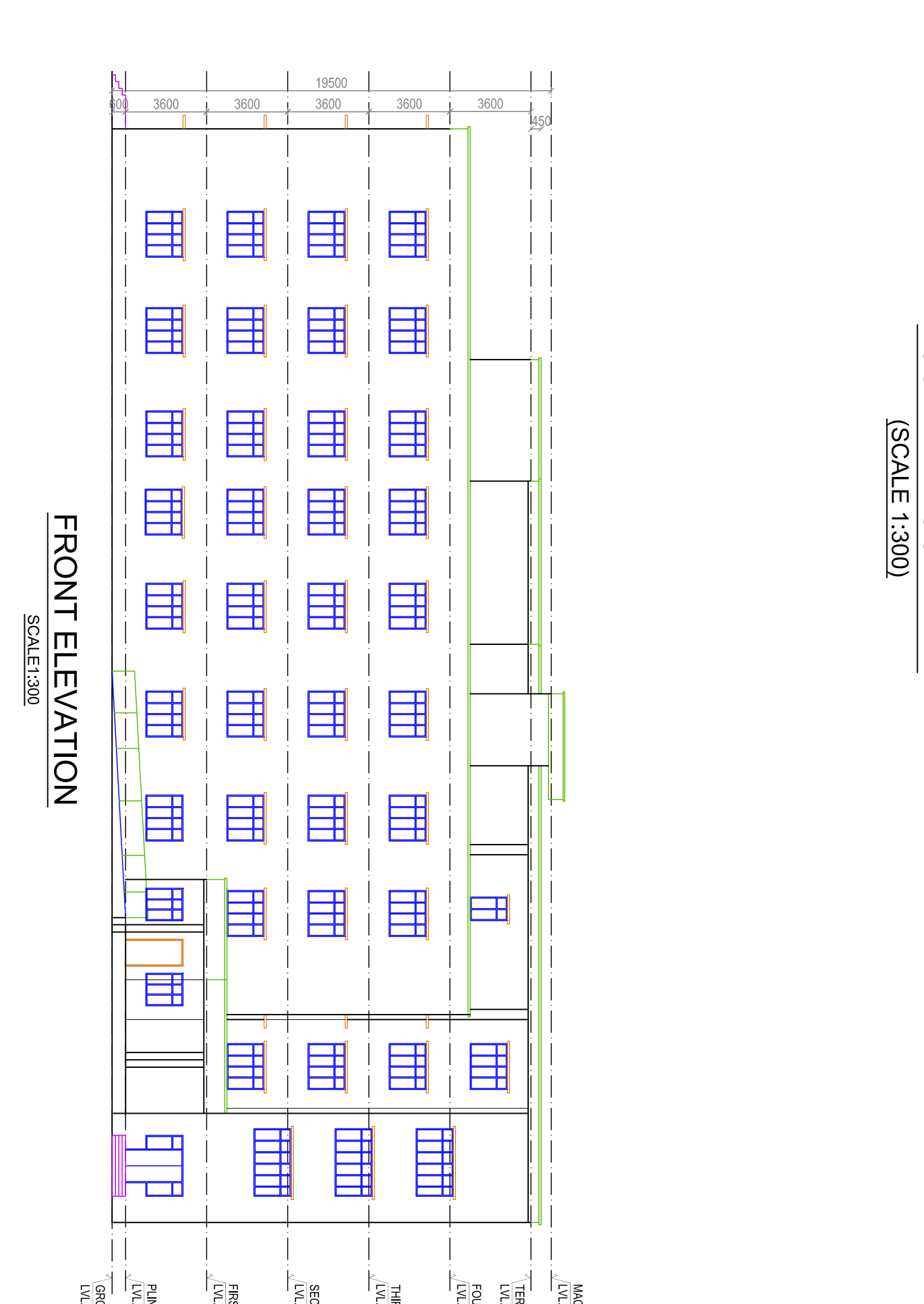
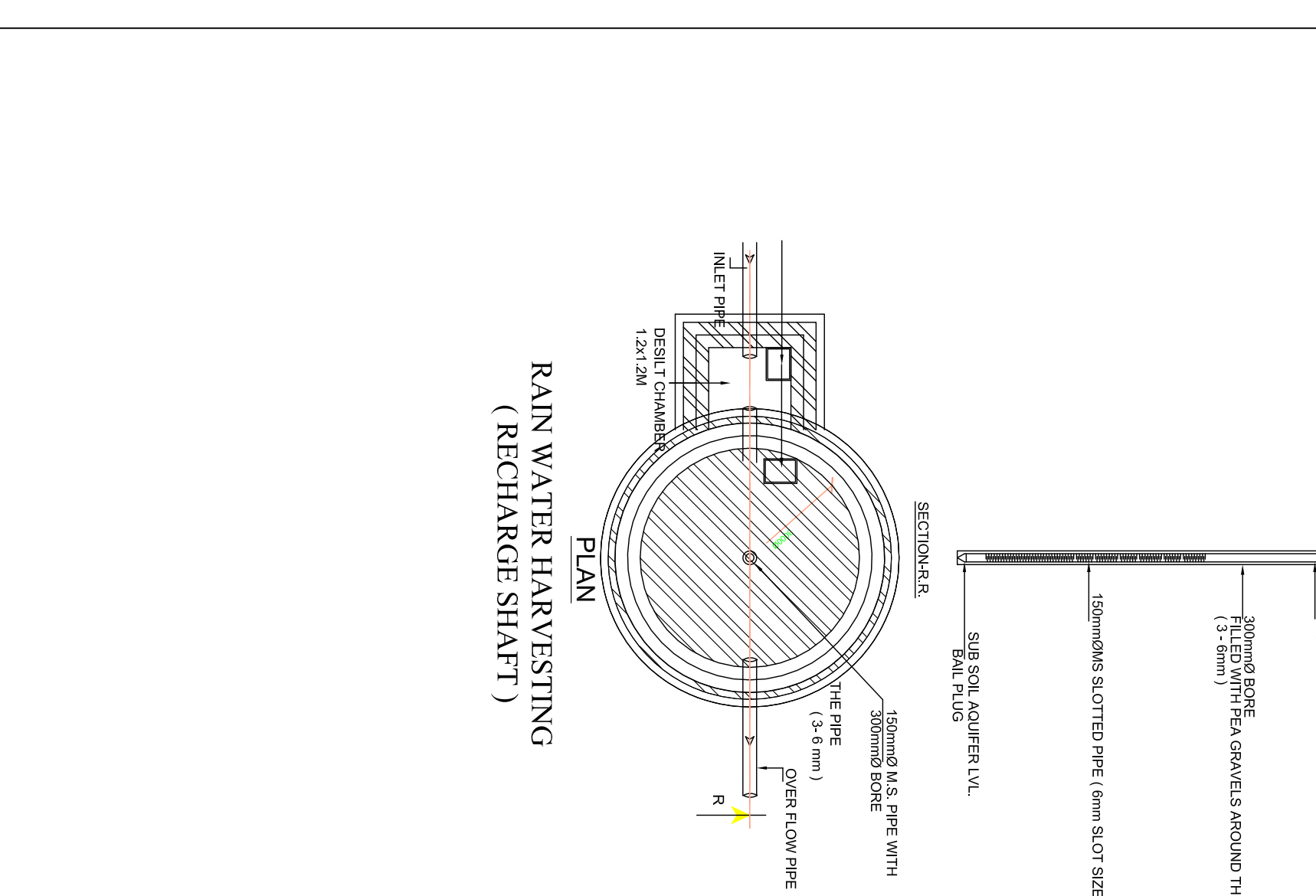
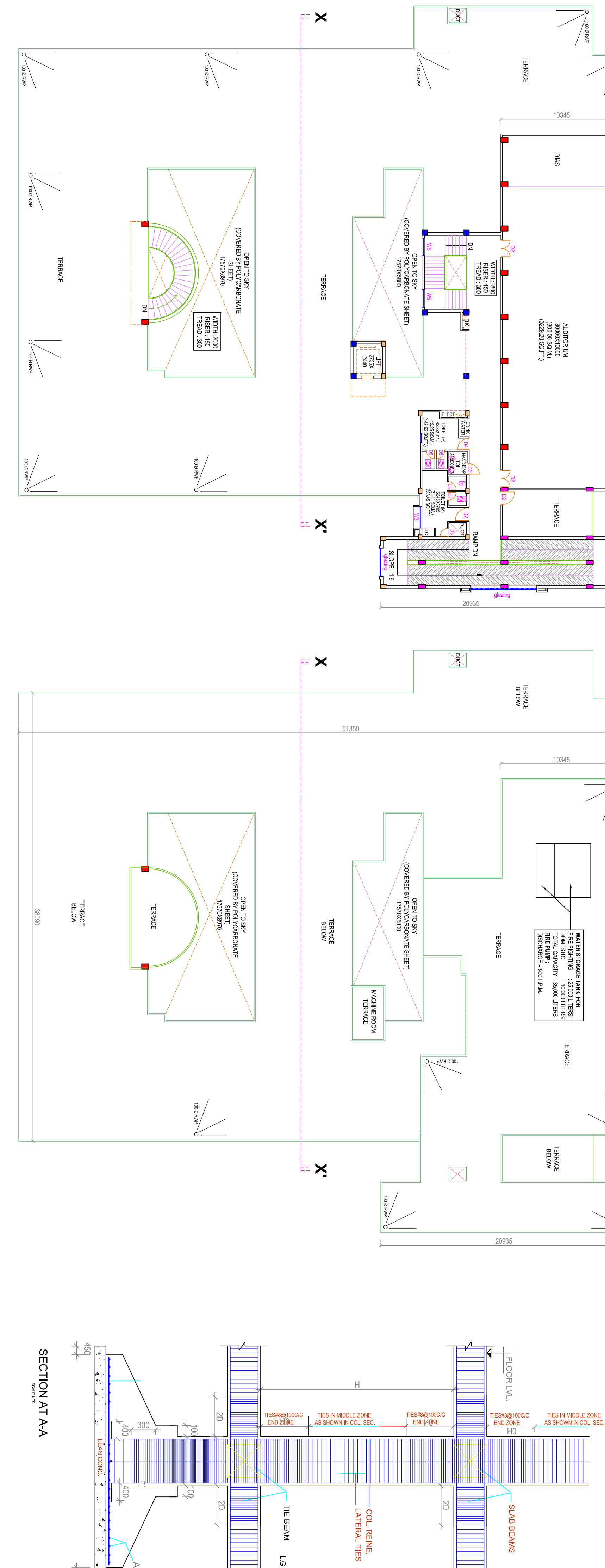
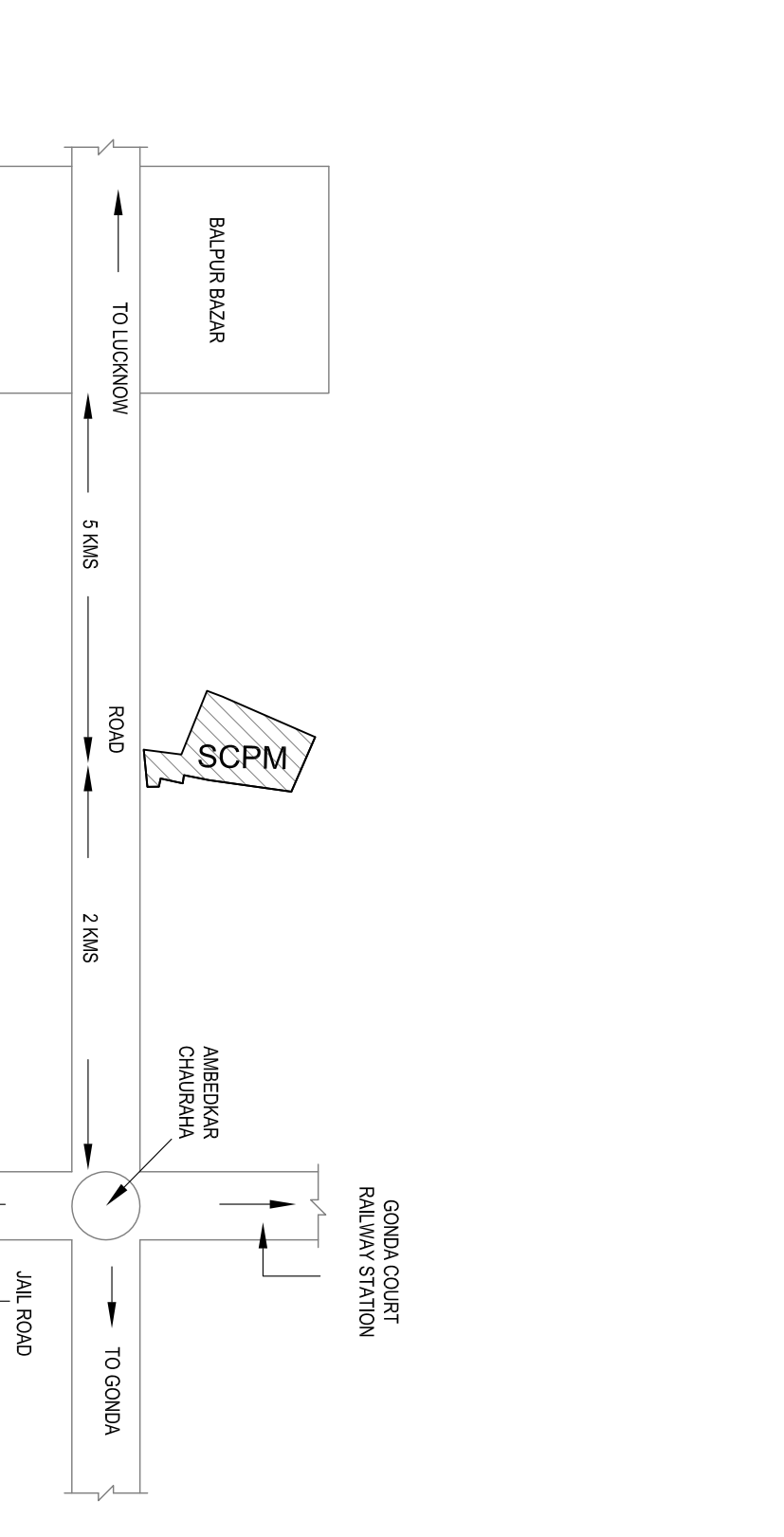
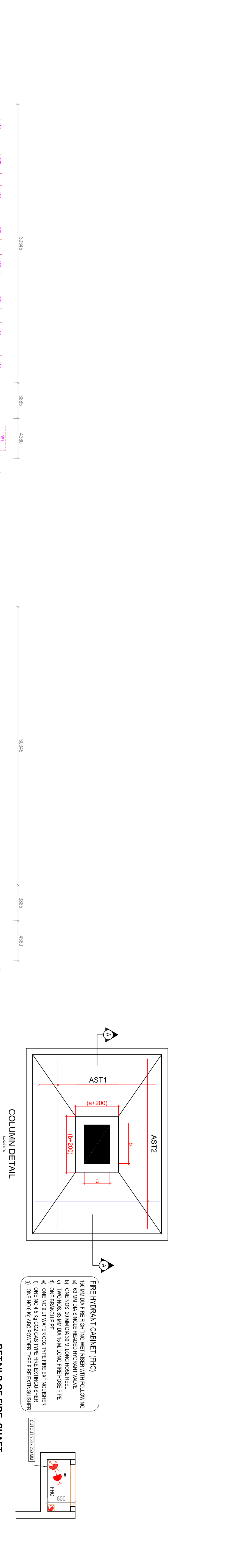
GRAND TOTAL OF COVERED AREA OF PHARMACY BLOCK FOR F.A.R. = 8,228.29 SQ.M (89888.75 SQ.FT)  
 WHICH IS F.A.R. ACHIEVED

**PARKING FOR PHARMACY BLOCK**

NO. OF PARKING REQUIRED FOR PHARMACY BLOCK = 1768/100 SQ.M = 17.68  
 = 17.68  
 TOTAL PROVIDED PARKING = 18

**GREEN AREA STATEMENT**

NO. OF TREES REQUIRED PER HECTARE OF 10380 SQ.M = 1038 X 50 = 51900  
 NO. OF TREES PROVIDED = 52



**SCHEDULE OF DOOR / WINDOW / OPENINGS**

S.NO	TYPE	SIZE	REL.	UNIT(S)	QTY
1	D1	2800 X 2000	-	2000	0200
2	D2	600 X 2000	-	2000	0200
3	D3	1800 X 2000	-	2000	0200
4	D4	1000 X 2000	-	2000	0200
5	D5	1000 X 2000	-	2000	0200
6	D6	1500 X 2000	-	2000	0200
7	D7	2000 X 2000	-	2000	0200
8	W1	2000 X 1650	900	2000	0200
9	W2	2000 X 1650	900	2000	0200
10	W3	1500 X 1650	900	2000	0200
11	W4	1500 X 1650	900	2000	0200
12	W5	1500 X 1650	900	2000	0200
13	V1	600 X 800	900	2000	0200

DATE: 1/1  
 SCALE: AS SHOWN