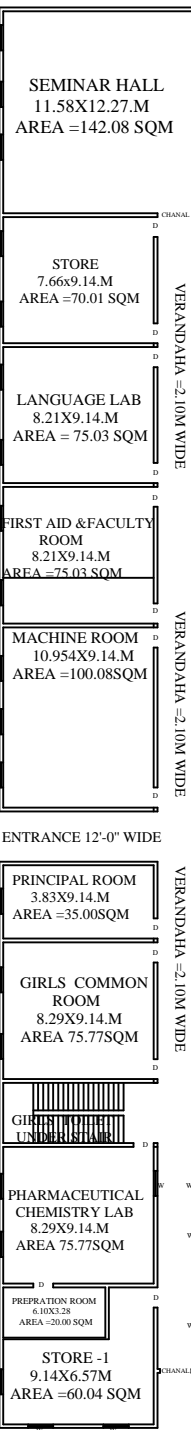


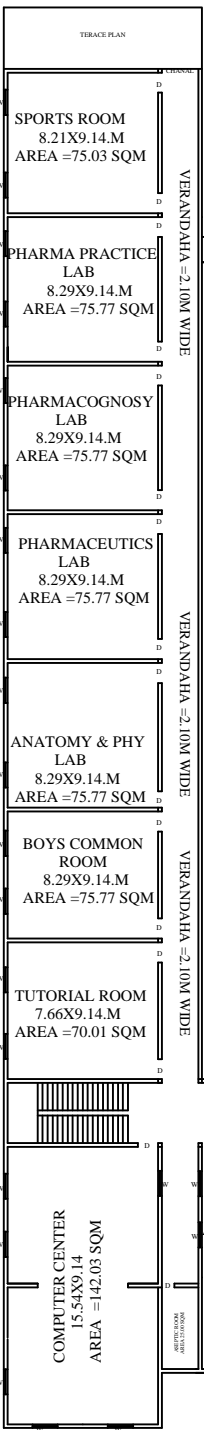
EXIST D.PHARMA BUILDING PLAN FOR S.P COLLEGE OF PHARMACY BY S.P EDUCATIONAL SOCIETY AT VILLAGE TIGRI (MOCHRIY) STATE HIGHWAY NO 51 BADAUN TO BIJON MARG IN K.M 185.00 CHANAGE 184.142 TEHSIL CHANDPUR DISTT BIJONOR U.P IN KHASRA NO 214,216,217
 MANAGER MR RAHUL BANSAL R/O MOH SARAY RAFI DHANAURA ROAD CHANDPUR
 TOTAL LAND AREA = 9040.40 SQM
 G.F.TOTAL COVD AREA FOR D.PHARMA = 1648.28 SQM
 F.F.TOTAL COVD AREA FOR D.PHARMA = 1510.24 SQM
 TOTAL COVD AREA FOR D.PHARMA = 3158.52 SQM

AREA DETAILS (SQM)	
INSTRUCTIONAL AREA	1490.30 SQM
ADMINISTRATIVE AREA	470.00 SQM
AMENITY AREA	566.52 SQM
ACCESS CIRCULATION AREA	631.70 SQM

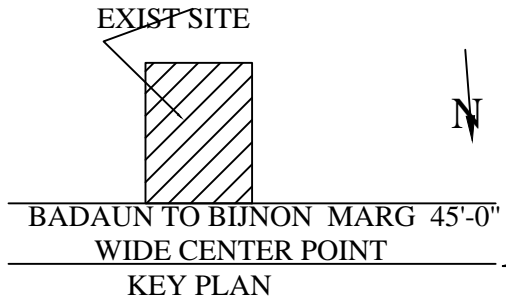
DOOR/WINDOW SCHEDULE
 D- 1.07X2.10
 W- 1.82X1.22



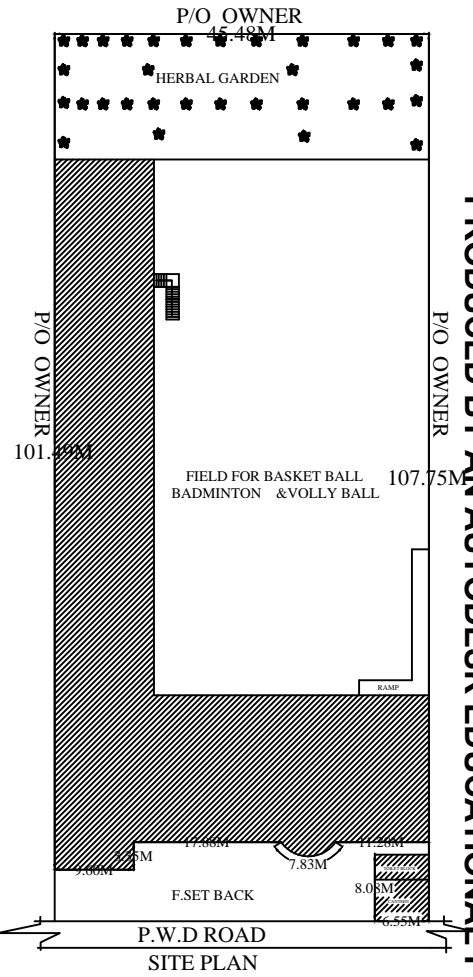
EXIST G.F. PLAN



EXIST F.F. PLAN



KEY PLAN



SITE PLAN

DRAWN BY SIGN.	OWNER SIGN.

PRODUCED BY AN AUTODESK EDUCATIONAL PRODUCT

PRODUCED BY AN AUTODESK EDUCATIONAL PRODUCT