

**PROMOTER :**  
SRI THAKUR JI MAHARAJ SAMITI TRUST, SHANTI NAGAR,  
KOLPANDRY, POST-BHAWANATHI, DISTT. AZAMGARH

**NAME OF INSTITUTION**  
S. S. S. COLLEGE OF PHARMACY

**SITUATION**  
VILLAGE-KHORSKAMPUK,  
DISTT.-AZAMGARH,  
STATE -UTTAR PRADESH

**NAME OF PROGRAMME/COURSE**  
B. PHARMA & D. PHARMA

**GATA NO. 3/179**  
AREA OF PLOT - 6100.0 SQ.M

SCHEDULE OF OPENINGS			
S.NO.	TYPE	WIDTH	BILL LVL.
1.	D	1200	0.00
2.	D1	1200	0.00
3.	D2	1000	2550
4.	D3	750	2550
5.	D4	3000	600
6.	V	1500	1650

AREA STATEMENTS	
	SQ. MT.
1 TOTAL PLOT AREA	6100.0
2 COVID AREA ON G.F	2335.06
3 COVID AREA ON F.F	2311.06
4 COVID AREA ON 5/F	2311.06
5 TOTAL COVID AREA	6957.24
6 % GROUND COVERAGE	28.82
7 F.A.R.	0.856

**LEGEND**

**INSTRUCTIONAL AREA**  
CLASS ROOM - 1 = 116.12 SQ.M  
CLASS ROOM - 2 = 116.12 SQ.M  
CLASS ROOM - 3 = 116.12 SQ.M  
CLASS ROOM - 4 = 116.12 SQ.M  
CLASS ROOM - 5 = 116.12 SQ.M  
CLASS ROOM - 6 = 116.12 SQ.M  
CLASS ROOM - 7 = 116.12 SQ.M  
CLASS ROOM - 8 = 116.12 SQ.M  
CLASS ROOM - 9 = 116.12 SQ.M  
CLASS ROOM - 10 = 116.12 SQ.M  
CLASS ROOM - 11 = 116.12 SQ.M  
CLASS ROOM - 12 = 116.12 SQ.M  
CLASS ROOM - 13 = 116.12 SQ.M  
CLASS ROOM - 14 = 116.12 SQ.M  
CLASS ROOM - 15 = 116.12 SQ.M  
CLASS ROOM - 16 = 116.12 SQ.M

**ANIMAL HOUSE = 200.00 SQ.M**  
**MACHINE RM = 116.12 SQ.M**  
**INSTRUMENTS RM = 116.12 SQ.M**  
**OFFICE = 69.77 SQ.M**  
**COMPUTER CENTER AND LANGUAGE LAB = 285.76 SQ.M**  
**LIBRARY CUM READING RM = 354.02 SQ.M**  
**SEMINAR HALL = 354.02 SQ.M**

**ADMINISTRATIVE AREA**  
PRINCIPAL/DIRECTOR RM = 116.12 SQ.M  
BOARD ROOM = 69.77 SQ.M  
OFFICE = 69.77 SQ.M  
OFFICE = 69.77 SQ.M  
H.O.D OFF-1 = 69.77 SQ.M  
H.O.D OFF-2 = 69.77 SQ.M  
H.O.D OFF-3 = 69.77 SQ.M  
FACULTY ROOM-1 = 116.12 SQ.M  
FACULTY ROOM-2 = 69.77 SQ.M  
INFAMMABLE CHEMICAL STORE = 69.77 SQ.M  
WATER TANK = 69.77 SQ.M  
MATERIALS STORE = 69.77 SQ.M  
SECURITY = 69.77 SQ.M  
HOUSE KEEPING = 69.77 SQ.M  
PANTRY FOR STAFF = 69.77 SQ.M  
PLACEMENT CONTROL = 69.77 SQ.M  
AMBIENT ROOM = 69.77 SQ.M

**TOILET BLOCK = 150 SQ.M**  
**BOYS COMMON ROOM = 116.12 SQ.M**  
**GIRLS COMMON ROOM = 116.12 SQ.M**  
**CAFETERIA/STORE = 472.91 SQ.M**  
**STATIONARY STORE = 69.77 SQ.M**  
**FIRST AID CUM SICK ROOM = 69.77 SQ.M**

**NORTH**

**SCALE** AS SHOWN

परिचित स्थान: 18-1-19  
को शी शी के अंतर्गत स्थित है।

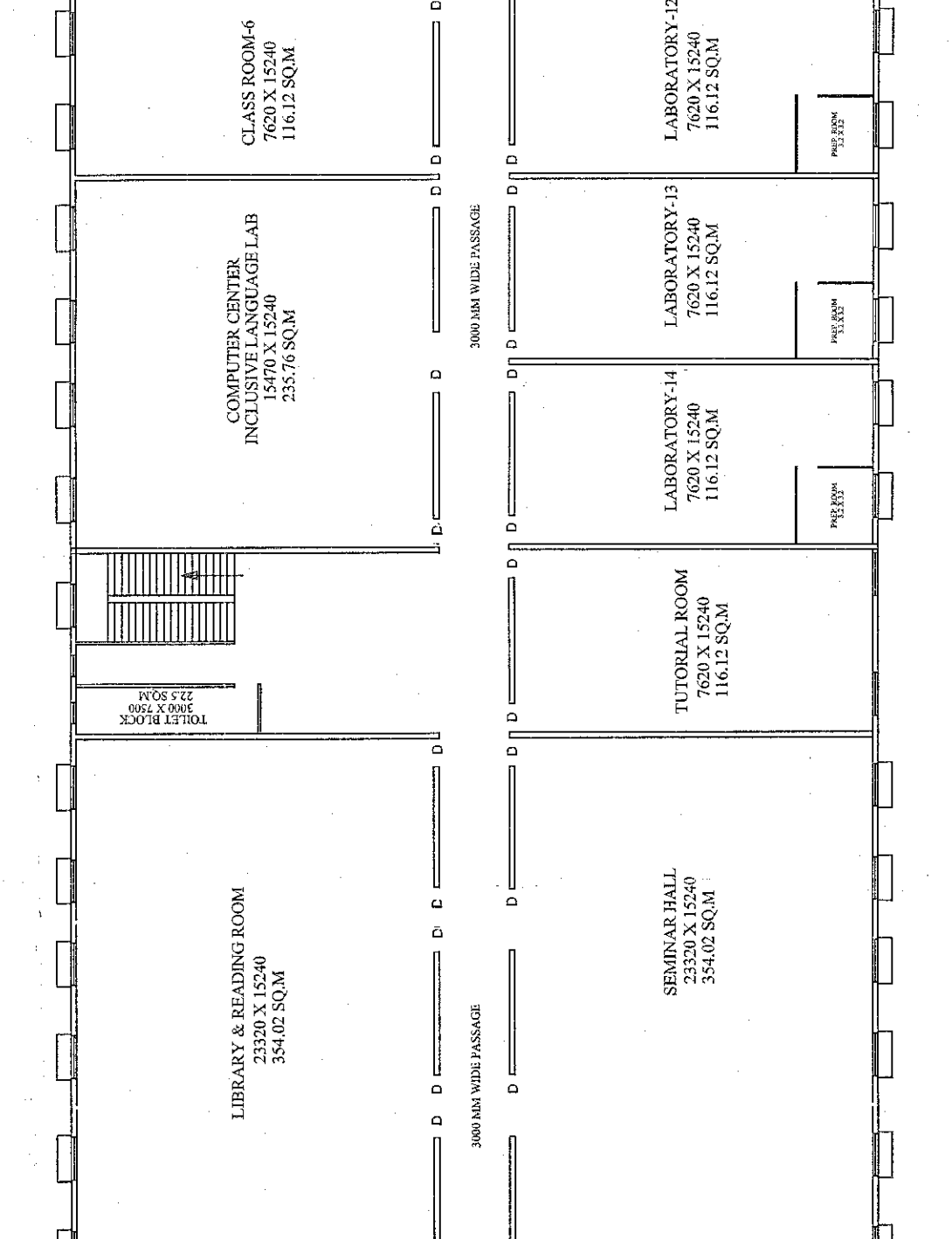
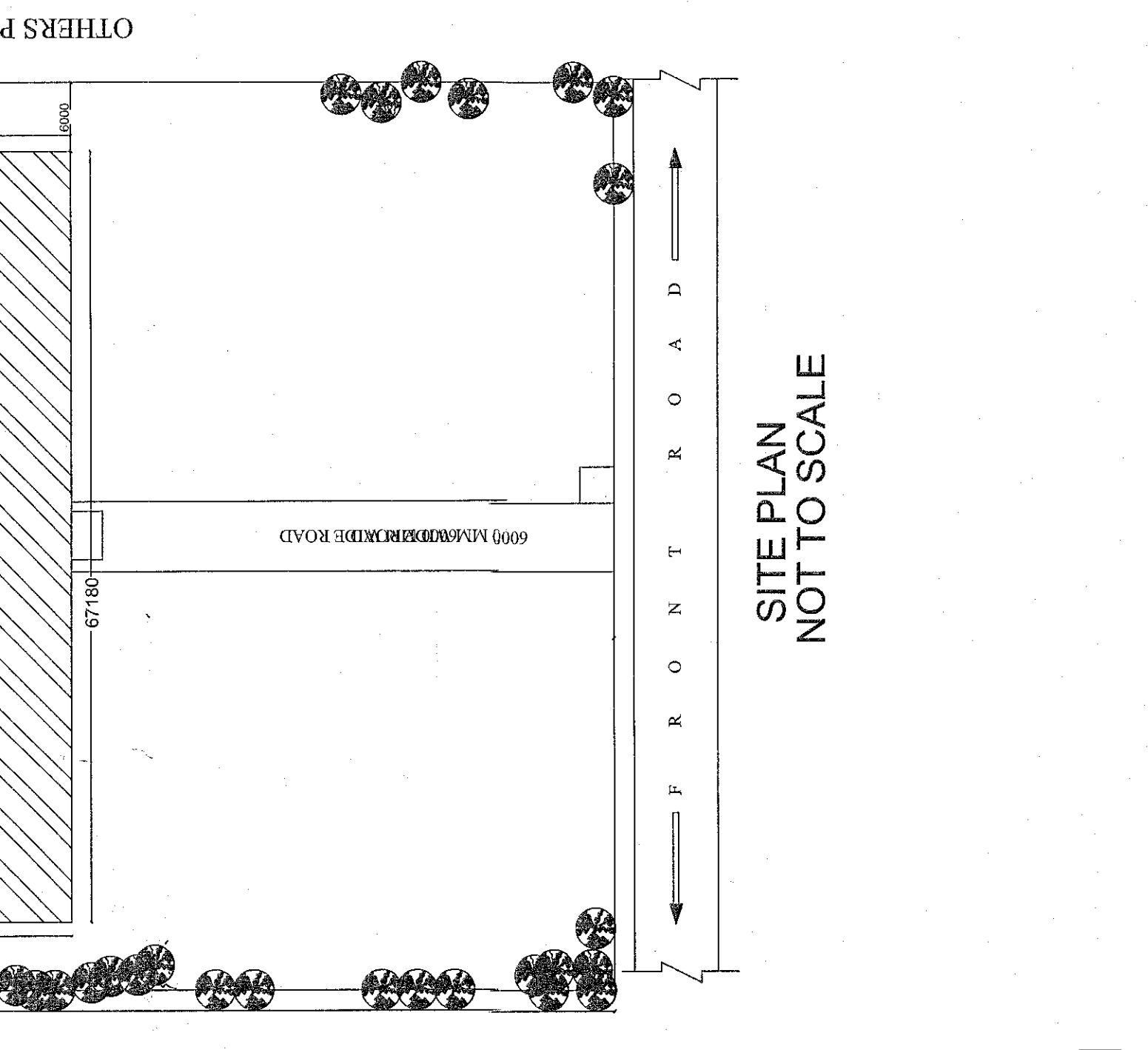
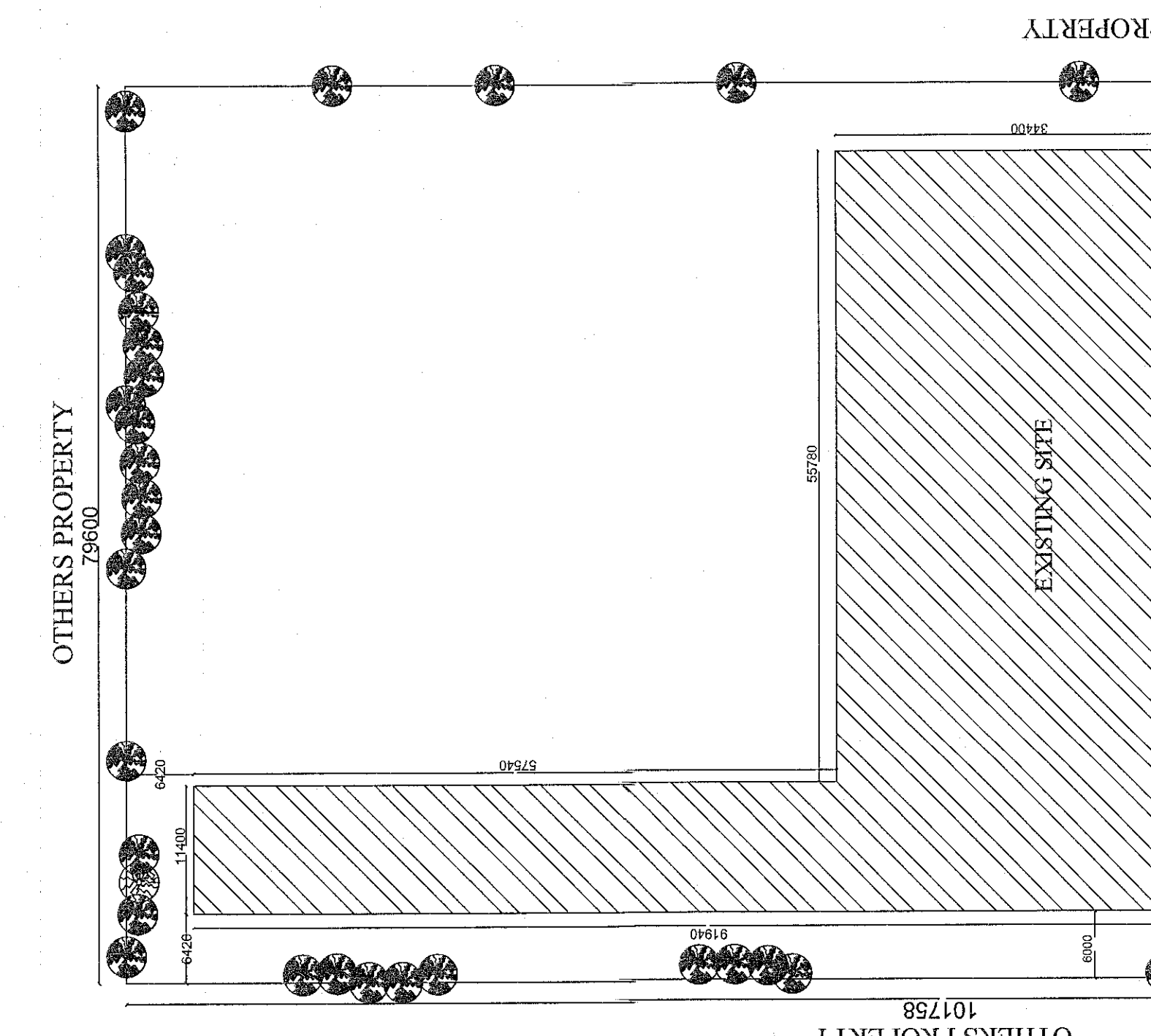
अभिप्रेत/अनुमति प्राप्त/अनुमति प्राप्त/अनुमति प्राप्त  
श्रीमान प्रो. अशोक कुमार (3000)

**OWNER SIGN**

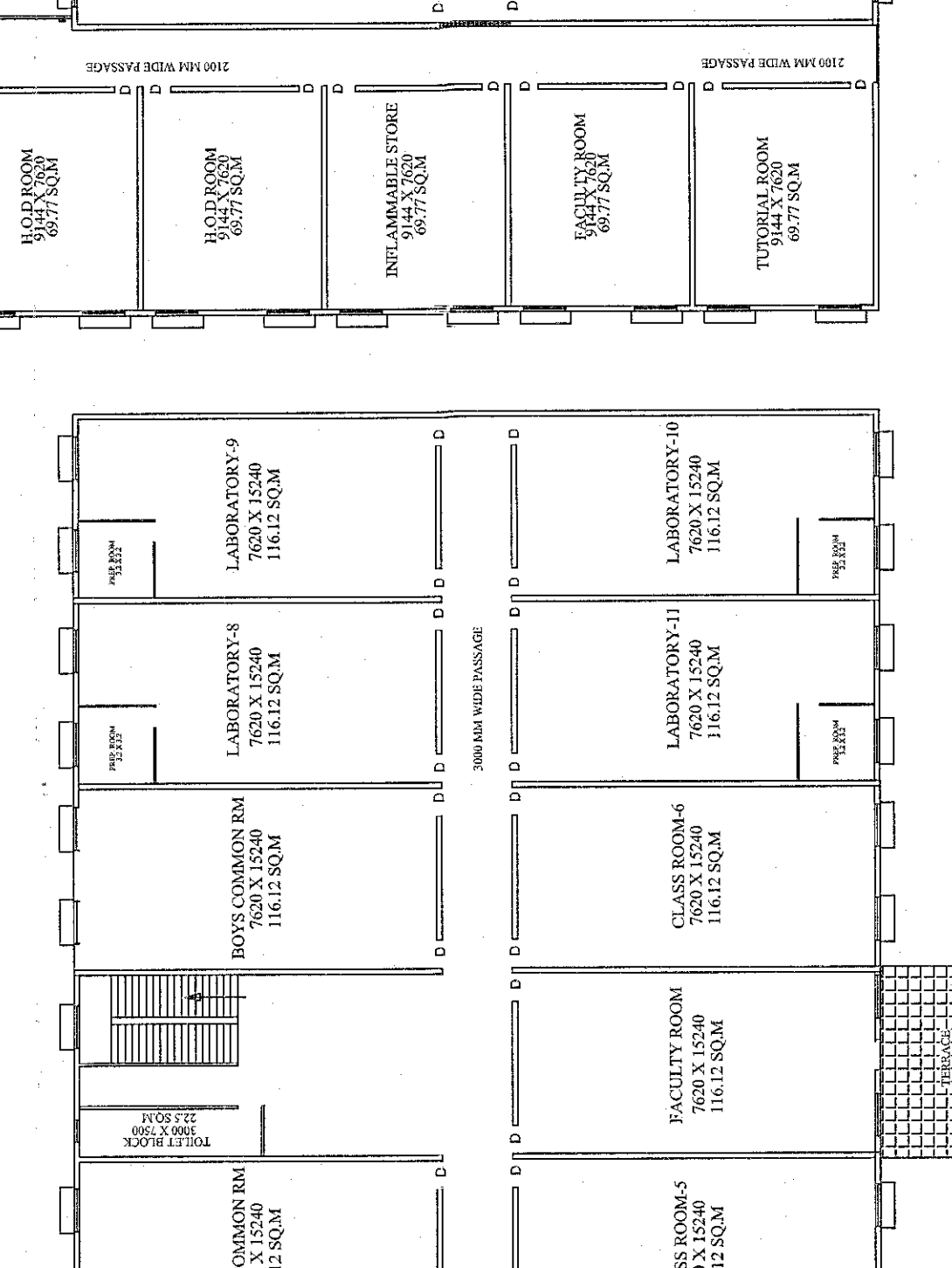
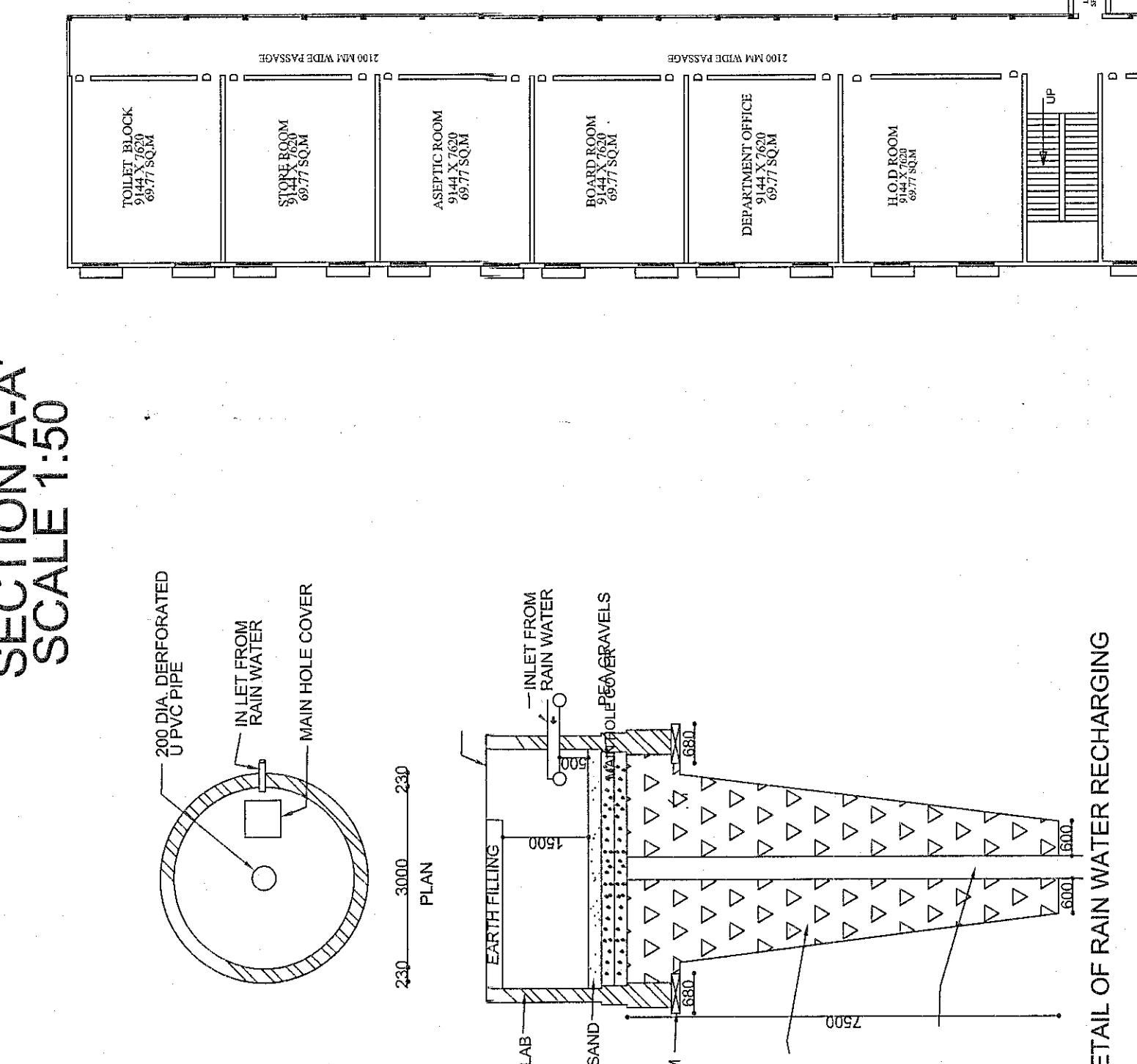
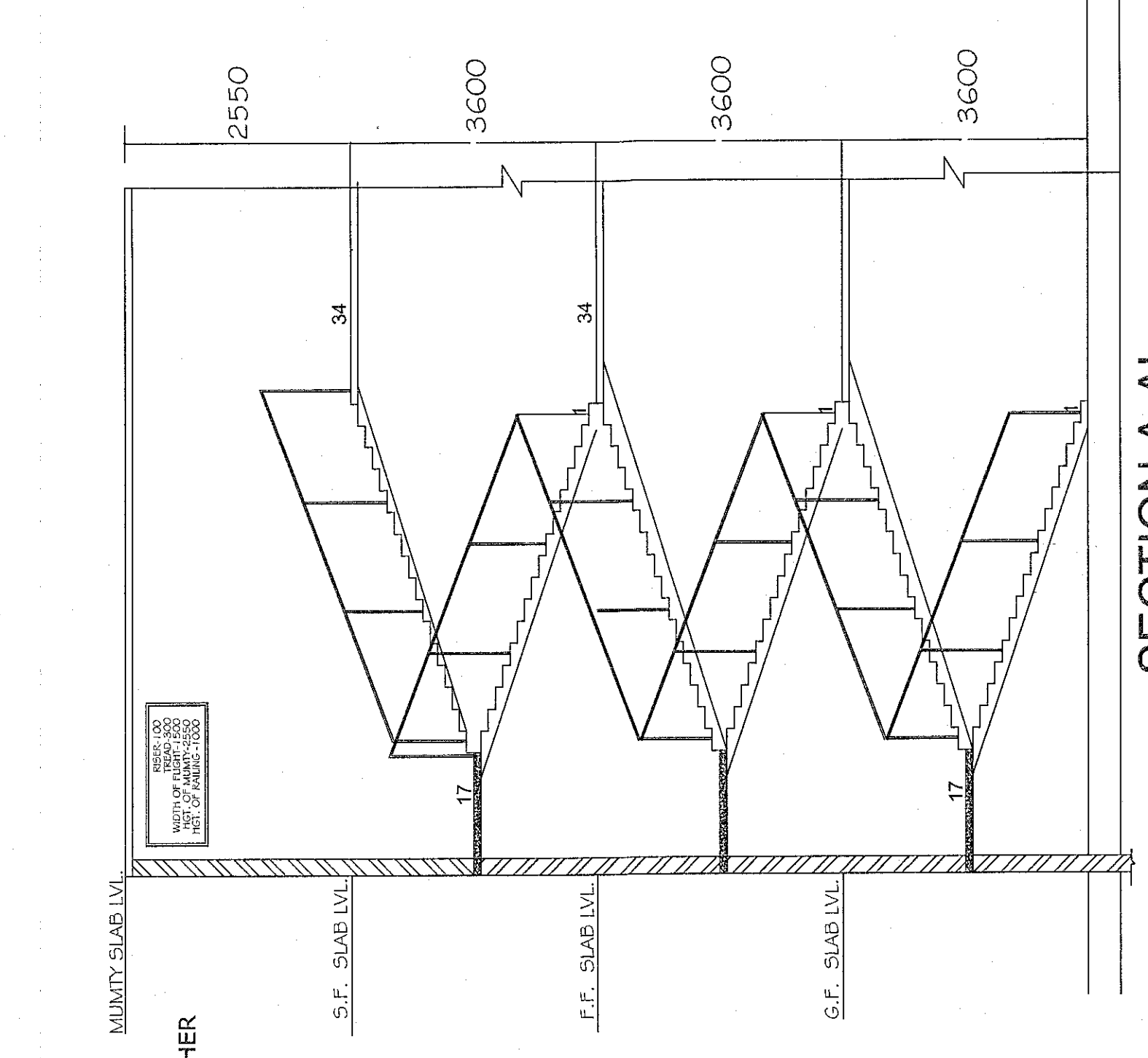
**Ar. Sarvesh Srivastava**  
CA/2007/35  
18/133, Indira Nagar, Azamgarh

**ARCHITECT SIGN**

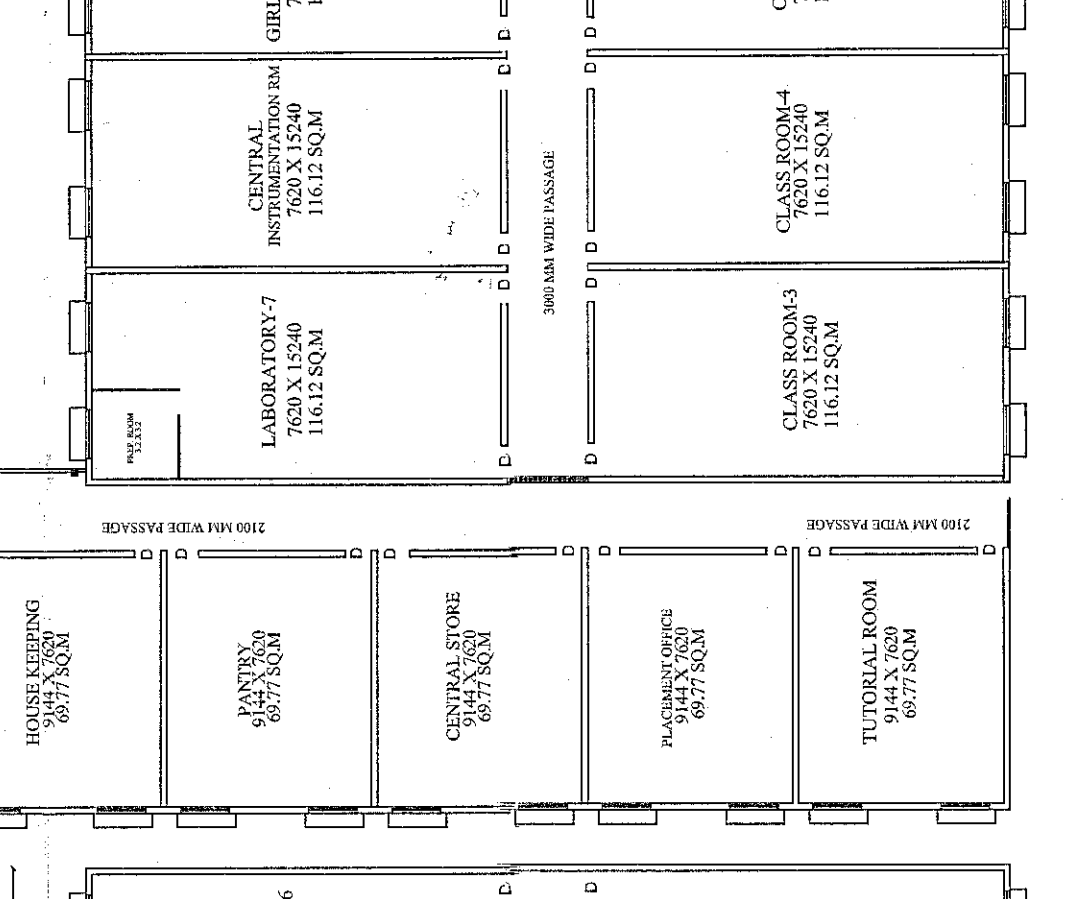
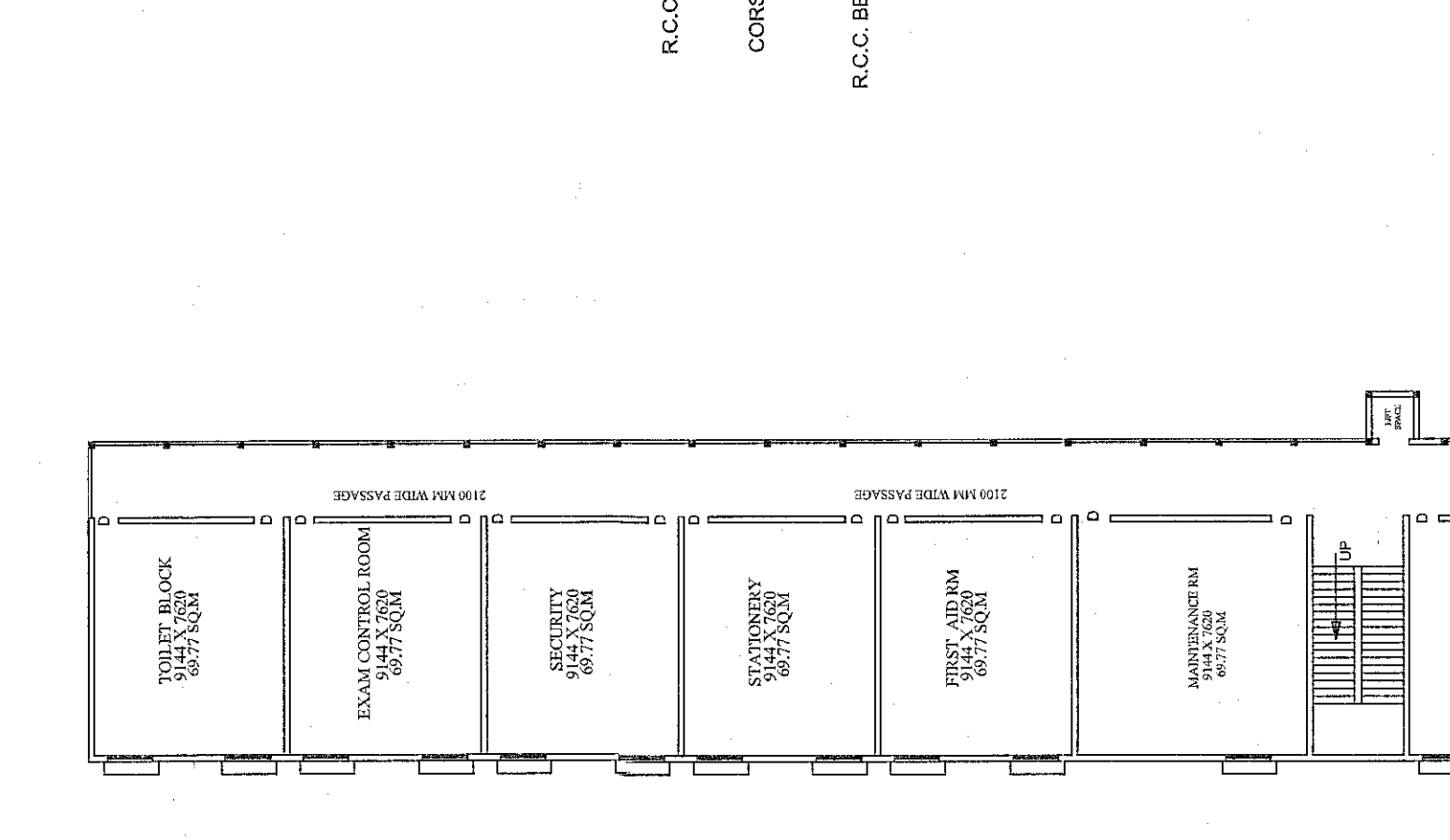
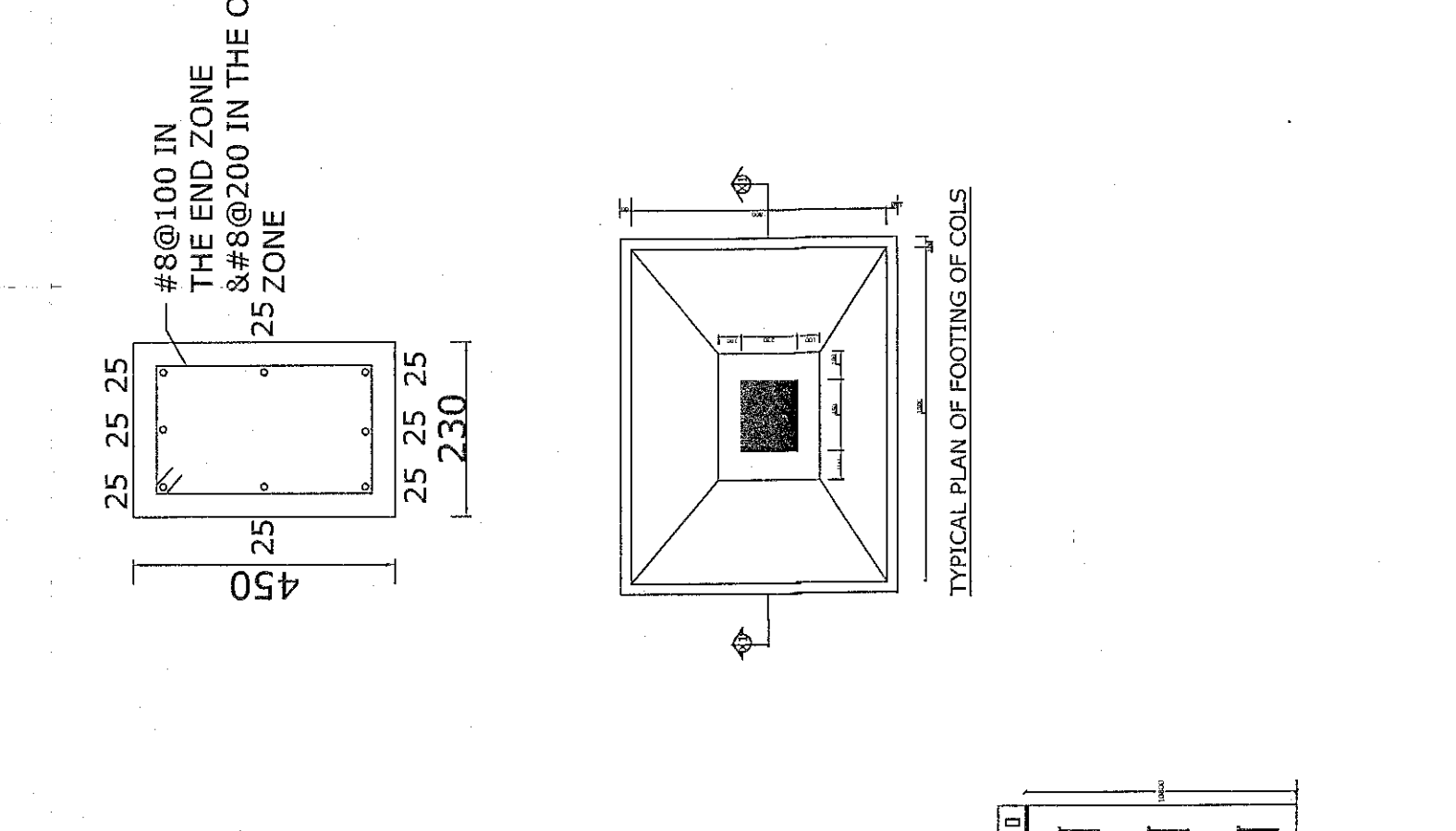
**ARCHITECTS :**  
CONCEPT DESIGNERS  
ARCHITECTS, ENGINEERS & INTERIOR DESIGNERS AVILLERS  
HEAD OFFICE: 18/133, INDIRA NAGAR, LUCKNOW  
MOBILE: NO-9895055555



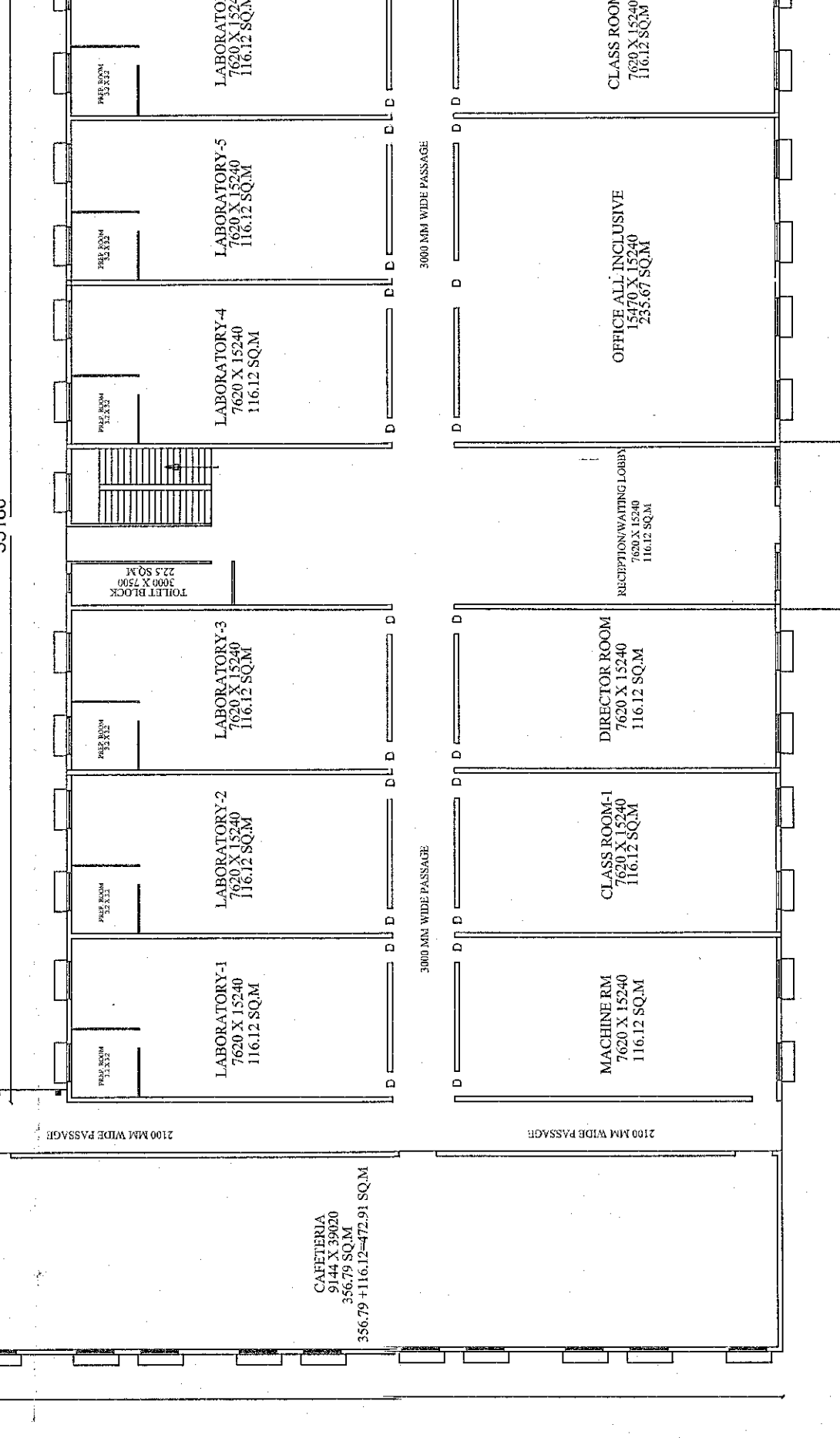
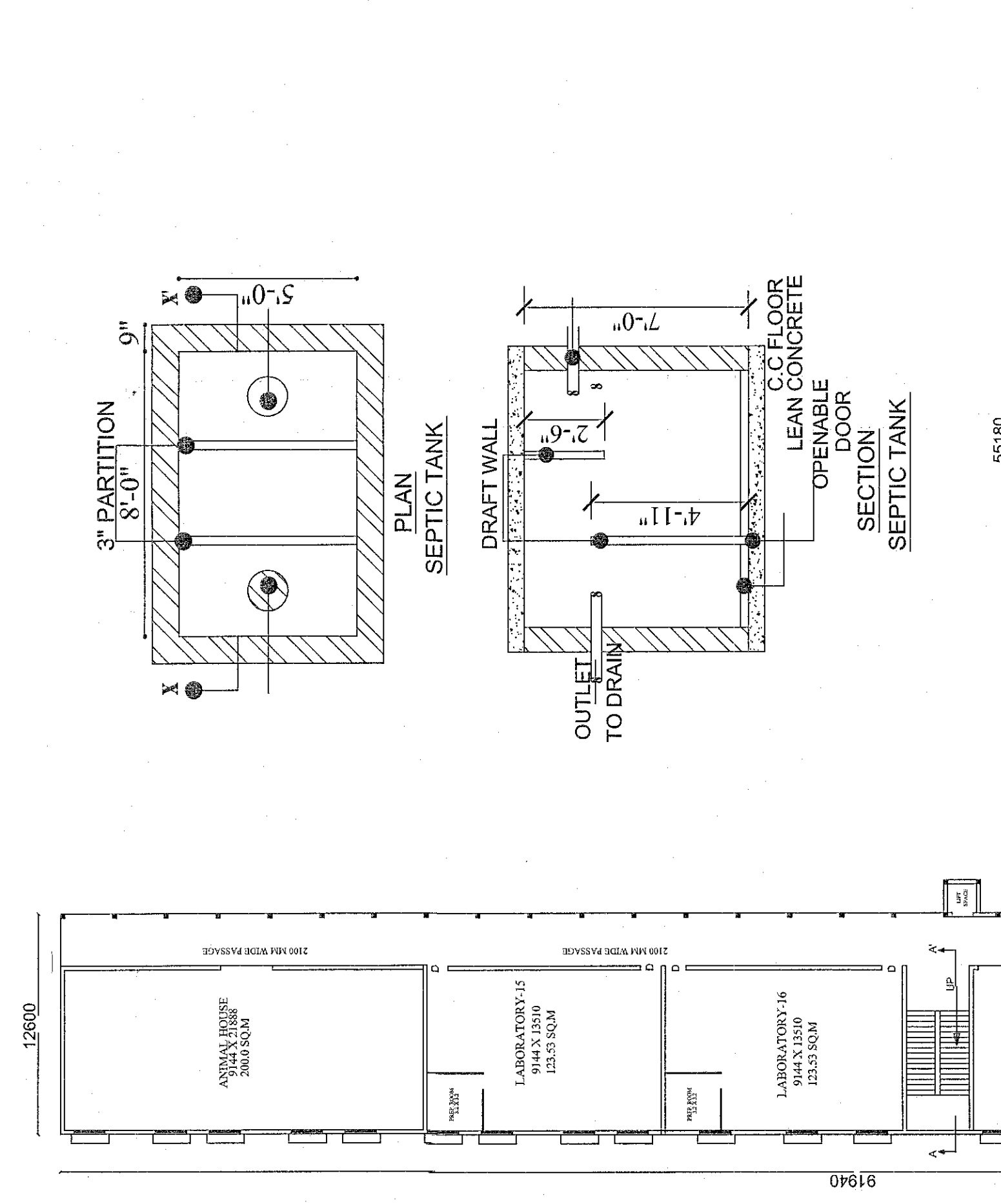
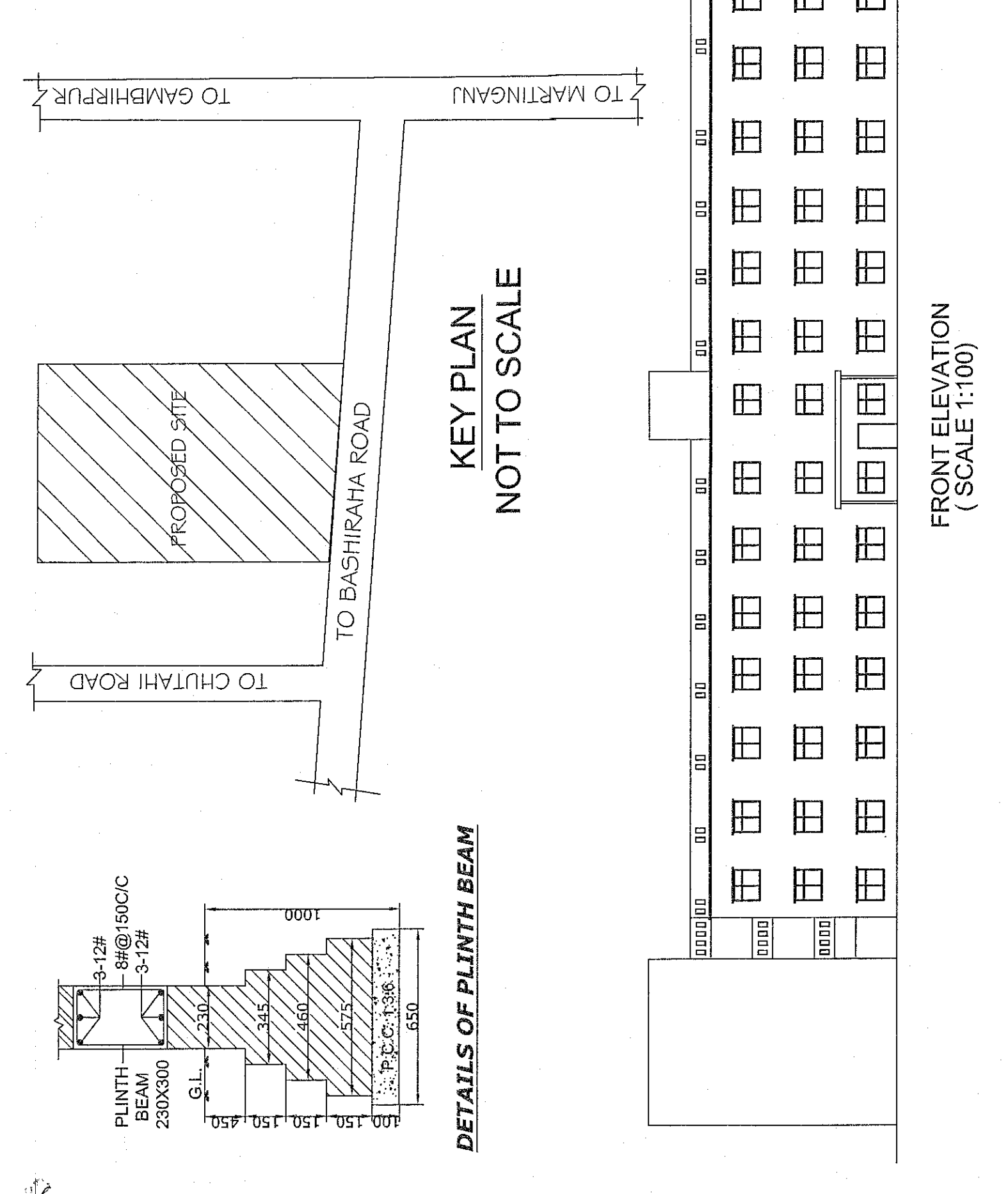
**SECOND FLOOR PLAN  
(SCALE 1:100)**



**FIRST FLOOR PLAN  
(SCALE 1:100)**



**GROUND FLOOR PLAN  
(SCALE 1:100)**



**GROUND FLOOR PLAN  
(SCALE 1:100)**

18-1-19