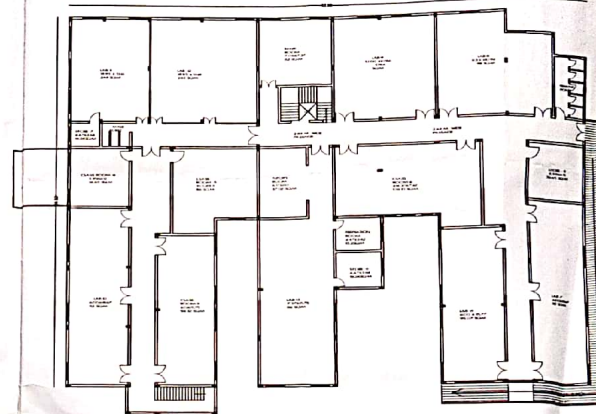


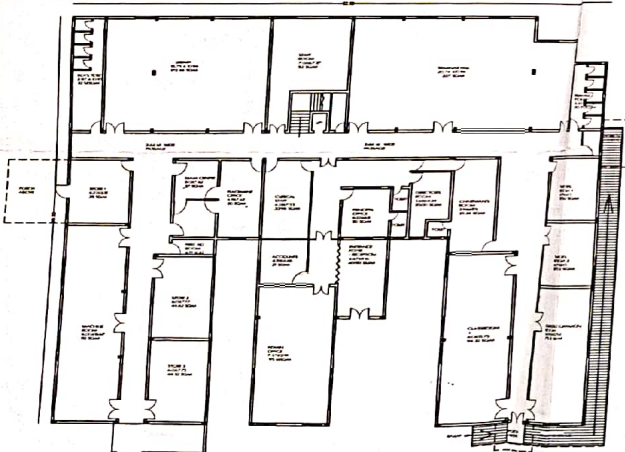
ELEVATION SCALE (1:100)



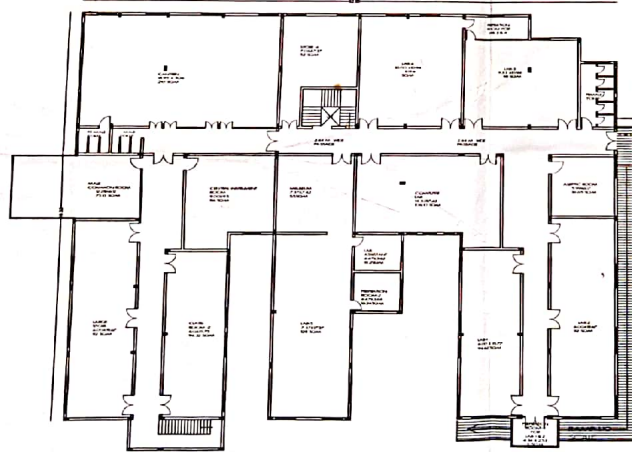
RAMP SECTION SCALE (1:50)



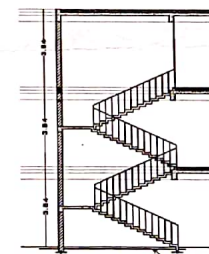
PROPOSED SECOND FLOOR PLAN SCALE (1:100)



GROUND FLOOR PLAN SCALE (1:100)



FIRST FLOOR PLAN SCALE (1:100)



SECTION-3-4 (SCALE - 1:50)

25 MM TH. C.C. FLOOR OVER 75 MM TH. BASE CONCRETE OVER 100 MM TH. SAND FILLING

SUBMISSION DRAWING FOR D.PHARMACY AND B.PHARMACY

SR. NO.	DESCRIPTION	QUANTITY	UNIT	REMARKS
1	REINFORCED CONCRETE			
2	CEMENT			
3	BRICK			
4	ROOFING			
5	GLASS			
6	PAINT			
7	WATER			
8	ELECTRICAL			
9	MECHANICAL			
10	PLUMBING			
11	IRON			
12	STEEL			
13	WOOD			
14	GLASS			
15	PAINT			
16	WATER			
17	ELECTRICAL			
18	MECHANICAL			
19	PLUMBING			
20	IRON			
21	STEEL			
22	WOOD			
23	GLASS			
24	PAINT			
25	WATER			
26	ELECTRICAL			
27	MECHANICAL			
28	PLUMBING			
29	IRON			
30	STEEL			
31	WOOD			
32	GLASS			
33	PAINT			
34	WATER			
35	ELECTRICAL			
36	MECHANICAL			
37	PLUMBING			
38	IRON			
39	STEEL			
40	WOOD			
41	GLASS			
42	PAINT			
43	WATER			
44	ELECTRICAL			
45	MECHANICAL			
46	PLUMBING			
47	IRON			
48	STEEL			
49	WOOD			
50	GLASS			
51	PAINT			
52	WATER			
53	ELECTRICAL			
54	MECHANICAL			
55	PLUMBING			
56	IRON			
57	STEEL			
58	WOOD			
59	GLASS			
60	PAINT			
61	WATER			
62	ELECTRICAL			
63	MECHANICAL			
64	PLUMBING			
65	IRON			
66	STEEL			
67	WOOD			
68	GLASS			
69	PAINT			
70	WATER			
71	ELECTRICAL			
72	MECHANICAL			
73	PLUMBING			
74	IRON			
75	STEEL			
76	WOOD			
77	GLASS			
78	PAINT			
79	WATER			
80	ELECTRICAL			
81	MECHANICAL			
82	PLUMBING			
83	IRON			
84	STEEL			
85	WOOD			
86	GLASS			
87	PAINT			
88	WATER			
89	ELECTRICAL			
90	MECHANICAL			
91	PLUMBING			
92	IRON			
93	STEEL			
94	WOOD			
95	GLASS			
96	PAINT			
97	WATER			
98	ELECTRICAL			
99	MECHANICAL			
100	PLUMBING			

AREA CHART	SQ. MT.
TOTAL LAND AREA	10725
PROPOSED GROUND FLOOR COVD.	1940.61
PROPOSED FIRST FLOOR COVD.	1940.61
TOTAL COVD. AREA	3881.22
F.A.R.	0.22%

ID	W	W
D0	1.80X2.74	1.24X1.83
D1	1.24X2.74	1.24X1.83
D2	1.01X2.74	1.24X1.83
D3	0.51X2.74	1.24X1.83
D4	0.76X2.74	1.24X1.83
D5	1.01X2.74	1.24X1.83
D6	1.24X2.74	1.24X1.83
D7	1.51X2.74	1.24X1.83
D8	1.76X2.74	1.24X1.83
D9	2.01X2.74	1.24X1.83
D10	2.26X2.74	1.24X1.83
D11	2.51X2.74	1.24X1.83
D12	2.76X2.74	1.24X1.83
D13	3.01X2.74	1.24X1.83
D14	3.26X2.74	1.24X1.83
D15	3.51X2.74	1.24X1.83
D16	3.76X2.74	1.24X1.83
D17	4.01X2.74	1.24X1.83
D18	4.26X2.74	1.24X1.83
D19	4.51X2.74	1.24X1.83
D20	4.76X2.74	1.24X1.83
D21	5.01X2.74	1.24X1.83
D22	5.26X2.74	1.24X1.83
D23	5.51X2.74	1.24X1.83
D24	5.76X2.74	1.24X1.83
D25	6.01X2.74	1.24X1.83
D26	6.26X2.74	1.24X1.83
D27	6.51X2.74	1.24X1.83
D28	6.76X2.74	1.24X1.83
D29	7.01X2.74	1.24X1.83
D30	7.26X2.74	1.24X1.83
D31	7.51X2.74	1.24X1.83
D32	7.76X2.74	1.24X1.83
D33	8.01X2.74	1.24X1.83
D34	8.26X2.74	1.24X1.83
D35	8.51X2.74	1.24X1.83
D36	8.76X2.74	1.24X1.83
D37	9.01X2.74	1.24X1.83
D38	9.26X2.74	1.24X1.83
D39	9.51X2.74	1.24X1.83
D40	9.76X2.74	1.24X1.83
D41	10.01X2.74	1.24X1.83
D42	10.26X2.74	1.24X1.83
D43	10.51X2.74	1.24X1.83
D44	10.76X2.74	1.24X1.83
D45	11.01X2.74	1.24X1.83
D46	11.26X2.74	1.24X1.83
D47	11.51X2.74	1.24X1.83
D48	11.76X2.74	1.24X1.83
D49	12.01X2.74	1.24X1.83
D50	12.26X2.74	1.24X1.83
D51	12.51X2.74	1.24X1.83
D52	12.76X2.74	1.24X1.83
D53	13.01X2.74	1.24X1.83
D54	13.26X2.74	1.24X1.83
D55	13.51X2.74	1.24X1.83
D56	13.76X2.74	1.24X1.83
D57	14.01X2.74	1.24X1.83
D58	14.26X2.74	1.24X1.83
D59	14.51X2.74	1.24X1.83
D60	14.76X2.74	1.24X1.83
D61	15.01X2.74	1.24X1.83
D62	15.26X2.74	1.24X1.83
D63	15.51X2.74	1.24X1.83
D64	15.76X2.74	1.24X1.83
D65	16.01X2.74	1.24X1.83
D66	16.26X2.74	1.24X1.83
D67	16.51X2.74	1.24X1.83
D68	16.76X2.74	1.24X1.83
D69	17.01X2.74	1.24X1.83
D70	17.26X2.74	1.24X1.83
D71	17.51X2.74	1.24X1.83
D72	17.76X2.74	1.24X1.83
D73	18.01X2.74	1.24X1.83
D74	18.26X2.74	1.24X1.83
D75	18.51X2.74	1.24X1.83
D76	18.76X2.74	1.24X1.83
D77	19.01X2.74	1.24X1.83
D78	19.26X2.74	1.24X1.83
D79	19.51X2.74	1.24X1.83
D80	19.76X2.74	1.24X1.83
D81	20.01X2.74	1.24X1.83
D82	20.26X2.74	1.24X1.83
D83	20.51X2.74	1.24X1.83
D84	20.76X2.74	1.24X1.83
D85	21.01X2.74	1.24X1.83
D86	21.26X2.74	1.24X1.83
D87	21.51X2.74	1.24X1.83
D88	21.76X2.74	1.24X1.83
D89	22.01X2.74	1.24X1.83
D90	22.26X2.74	1.24X1.83
D91	22.51X2.74	1.24X1.83
D92	22.76X2.74	1.24X1.83
D93	23.01X2.74	1.24X1.83
D94	23.26X2.74	1.24X1.83
D95	23.51X2.74	1.24X1.83
D96	23.76X2.74	1.24X1.83
D97	24.01X2.74	1.24X1.83
D98	24.26X2.74	1.24X1.83
D99	24.51X2.74	1.24X1.83
D100	24.76X2.74	1.24X1.83

1. 1:1.5 CEMENT CONCRETE SHALL BE USED IN FOUNDATION  
 2. 1:1.5 CEMENT CONCRETE SHALL BE USED IN FOUNDATION  
 3. 1:1.5 CEMENT CONCRETE SHALL BE USED IN FOUNDATION  
 4. 1:1.5 CEMENT CONCRETE SHALL BE USED IN FOUNDATION  
 5. 1:1.5 CEMENT CONCRETE SHALL BE USED IN FOUNDATION  
 6. 1:1.5 CEMENT CONCRETE SHALL BE USED IN FOUNDATION  
 7. 1:1.5 CEMENT CONCRETE SHALL BE USED IN FOUNDATION  
 8. 1:1.5 CEMENT CONCRETE SHALL BE USED IN FOUNDATION  
 9. 1:1.5 CEMENT CONCRETE SHALL BE USED IN FOUNDATION  
 10. 1:1.5 CEMENT CONCRETE SHALL BE USED IN FOUNDATION  
 11. 1:1.5 CEMENT CONCRETE SHALL BE USED IN FOUNDATION  
 12. 1:1.5 CEMENT CONCRETE SHALL BE USED IN FOUNDATION  
 13. 1:1.5 CEMENT CONCRETE SHALL BE USED IN FOUNDATION  
 14. 1:1.5 CEMENT CONCRETE SHALL BE USED IN FOUNDATION  
 15. 1:1.5 CEMENT CONCRETE SHALL BE USED IN FOUNDATION  
 16. 1:1.5 CEMENT CONCRETE SHALL BE USED IN FOUNDATION  
 17. 1:1.5 CEMENT CONCRETE SHALL BE USED IN FOUNDATION  
 18. 1:1.5 CEMENT CONCRETE SHALL BE USED IN FOUNDATION  
 19. 1:1.5 CEMENT CONCRETE SHALL BE USED IN FOUNDATION  
 20. 1:1.5 CEMENT CONCRETE SHALL BE USED IN FOUNDATION  
 21. 1:1.5 CEMENT CONCRETE SHALL BE USED IN FOUNDATION  
 22. 1:1.5 CEMENT CONCRETE SHALL BE USED IN FOUNDATION  
 23. 1:1.5 CEMENT CONCRETE SHALL BE USED IN FOUNDATION  
 24. 1:1.5 CEMENT CONCRETE SHALL BE USED IN FOUNDATION  
 25. 1:1.5 CEMENT CONCRETE SHALL BE USED IN FOUNDATION  
 26. 1:1.5 CEMENT CONCRETE SHALL BE USED IN FOUNDATION  
 27. 1:1.5 CEMENT CONCRETE SHALL BE USED IN FOUNDATION  
 28. 1:1.5 CEMENT CONCRETE SHALL BE USED IN FOUNDATION  
 29. 1:1.5 CEMENT CONCRETE SHALL BE USED IN FOUNDATION  
 30. 1:1.5 CEMENT CONCRETE SHALL BE USED IN FOUNDATION  
 31. 1:1.5 CEMENT CONCRETE SHALL BE USED IN FOUNDATION  
 32. 1:1.5 CEMENT CONCRETE SHALL BE USED IN FOUNDATION  
 33. 1:1.5 CEMENT CONCRETE SHALL BE USED IN FOUNDATION  
 34. 1:1.5 CEMENT CONCRETE SHALL BE USED IN FOUNDATION  
 35. 1:1.5 CEMENT CONCRETE SHALL BE USED IN FOUNDATION  
 36. 1:1.5 CEMENT CONCRETE SHALL BE USED IN FOUNDATION  
 37. 1:1.5 CEMENT CONCRETE SHALL BE USED IN FOUNDATION  
 38. 1:1.5 CEMENT CONCRETE SHALL BE USED IN FOUNDATION  
 39. 1:1.5 CEMENT CONCRETE SHALL BE USED IN FOUNDATION  
 40. 1:1.5 CEMENT CONCRETE SHALL BE USED IN FOUNDATION  
 41. 1:1.5 CEMENT CONCRETE SHALL BE USED IN FOUNDATION  
 42. 1:1.5 CEMENT CONCRETE SHALL BE USED IN FOUNDATION  
 43. 1:1.5 CEMENT CONCRETE SHALL BE USED IN FOUNDATION  
 44. 1:1.5 CEMENT CONCRETE SHALL BE USED IN FOUNDATION  
 45. 1:1.5 CEMENT CONCRETE SHALL BE USED IN FOUNDATION  
 46. 1:1.5 CEMENT CONCRETE SHALL BE USED IN FOUNDATION  
 47. 1:1.5 CEMENT CONCRETE SHALL BE USED IN FOUNDATION  
 48. 1:1.5 CEMENT CONCRETE SHALL BE USED IN FOUNDATION  
 49. 1:1.5 CEMENT CONCRETE SHALL BE USED IN FOUNDATION  
 50. 1:1.5 CEMENT CONCRETE SHALL BE USED IN FOUNDATION  
 51. 1:1.5 CEMENT CONCRETE SHALL BE USED IN FOUNDATION  
 52. 1:1.5 CEMENT CONCRETE SHALL BE USED IN FOUNDATION  
 53. 1:1.5 CEMENT CONCRETE SHALL BE USED IN FOUNDATION  
 54. 1:1.5 CEMENT CONCRETE SHALL BE USED IN FOUNDATION  
 55. 1:1.5 CEMENT CONCRETE SHALL BE USED IN FOUNDATION  
 56. 1:1.5 CEMENT CONCRETE SHALL BE USED IN FOUNDATION  
 57. 1:1.5 CEMENT CONCRETE SHALL BE USED IN FOUNDATION  
 58. 1:1.5 CEMENT CONCRETE SHALL BE USED IN FOUNDATION  
 59. 1:1.5 CEMENT CONCRETE SHALL BE USED IN FOUNDATION  
 60. 1:1.5 CEMENT CONCRETE SHALL BE USED IN FOUNDATION  
 61. 1:1.5 CEMENT CONCRETE SHALL BE USED IN FOUNDATION  
 62. 1:1.5 CEMENT CONCRETE SHALL BE USED IN FOUNDATION  
 63. 1:1.5 CEMENT CONCRETE SHALL BE USED IN FOUNDATION  
 64. 1:1.5 CEMENT CONCRETE SHALL BE USED IN FOUNDATION  
 65. 1:1.5 CEMENT CONCRETE SHALL BE USED IN FOUNDATION  
 66. 1:1.5 CEMENT CONCRETE SHALL BE USED IN FOUNDATION  
 67. 1:1.5 CEMENT CONCRETE SHALL BE USED IN FOUNDATION  
 68. 1:1.5 CEMENT CONCRETE SHALL BE USED IN FOUNDATION  
 69. 1:1.5 CEMENT CONCRETE SHALL BE USED IN FOUNDATION  
 70. 1:1.5 CEMENT CONCRETE SHALL BE USED IN FOUNDATION  
 71. 1:1.5 CEMENT CONCRETE SHALL BE USED IN FOUNDATION  
 72. 1:1.5 CEMENT CONCRETE SHALL BE USED IN FOUNDATION  
 73. 1:1.5 CEMENT CONCRETE SHALL BE USED IN FOUNDATION  
 74. 1:1.5 CEMENT CONCRETE SHALL BE USED IN FOUNDATION  
 75. 1:1.5 CEMENT CONCRETE SHALL BE USED IN FOUNDATION  
 76. 1:1.5 CEMENT CONCRETE SHALL BE USED IN FOUNDATION  
 77. 1:1.5 CEMENT CONCRETE SHALL BE USED IN FOUNDATION  
 78. 1:1.5 CEMENT CONCRETE SHALL BE USED IN FOUNDATION  
 79. 1:1.5 CEMENT CONCRETE SHALL BE USED IN FOUNDATION  
 80. 1:1.5 CEMENT CONCRETE SHALL BE USED IN FOUNDATION  
 81. 1:1.5 CEMENT CONCRETE SHALL BE USED IN FOUNDATION  
 82. 1:1.5 CEMENT CONCRETE SHALL BE USED IN FOUNDATION  
 83. 1:1.5 CEMENT CONCRETE SHALL BE USED IN FOUNDATION  
 84. 1:1.5 CEMENT CONCRETE SHALL BE USED IN FOUNDATION  
 85. 1:1.5 CEMENT CONCRETE SHALL BE USED IN FOUNDATION  
 86. 1:1.5 CEMENT CONCRETE SHALL BE USED IN FOUNDATION  
 87. 1:1.5 CEMENT CONCRETE SHALL BE USED IN FOUNDATION  
 88. 1:1.5 CEMENT CONCRETE SHALL BE USED IN FOUNDATION  
 89. 1:1.5 CEMENT CONCRETE SHALL BE USED IN FOUNDATION  
 90. 1:1.5 CEMENT CONCRETE SHALL BE USED IN FOUNDATION  
 91. 1:1.5 CEMENT CONCRETE SHALL BE USED IN FOUNDATION  
 92. 1:1.5 CEMENT CONCRETE SHALL BE USED IN FOUNDATION  
 93. 1:1.5 CEMENT CONCRETE SHALL BE USED IN FOUNDATION  
 94. 1:1.5 CEMENT CONCRETE SHALL BE USED IN FOUNDATION  
 95. 1:1.5 CEMENT CONCRETE SHALL BE USED IN FOUNDATION  
 96. 1:1.5 CEMENT CONCRETE SHALL BE USED IN FOUNDATION  
 97. 1:1.5 CEMENT CONCRETE SHALL BE USED IN FOUNDATION  
 98. 1:1.5 CEMENT CONCRETE SHALL BE USED IN FOUNDATION  
 99. 1:1.5 CEMENT CONCRETE SHALL BE USED IN FOUNDATION  
 100. 1:1.5 CEMENT CONCRETE SHALL BE USED IN FOUNDATION

DELHI METRO RAILWAY

PROPOSED JTE

KEY PLAN (not to scale)

DATE: 21-08-2017

BRICKKERN DESIGN CONSULTANT

ARCHITECT, INTERIOR, LANDSCAPE

3RD FLOOR TO 2ND FLOOR

AS SHOWN

NO. 10, 11, 12, 13, 14, 15, 16, 17, 18, 19, 20, 21, 22, 23, 24, 25, 26, 27, 28, 29, 30, 31, 32, 33, 34, 35, 36, 37, 38, 39, 40, 41, 42, 43, 44, 45, 46, 47, 48, 49, 50, 51, 52, 53, 54, 55, 56, 57, 58, 59, 60, 61, 62, 63, 64, 65, 66, 67, 68, 69, 70, 71, 72, 73, 74, 75, 76, 77, 78, 79, 80, 81, 82, 83, 84, 85, 86, 87, 88, 89, 90, 91, 92, 93, 94, 95, 96, 97, 98, 99, 100

PROJECT: A PROPOSED COLLEGE BUILDING PLAN FOR JAGANNATH COLLEGE OF PHARMACY

MOHAMMADPUR ROAD, MOHANNAGAR, DIST. GHAZIABAD, U.P.

APPLICANT SIGN: SRI Jagannath

ARCHITECTS SIGN: Sifat Ullah Khan

CA/2015/68