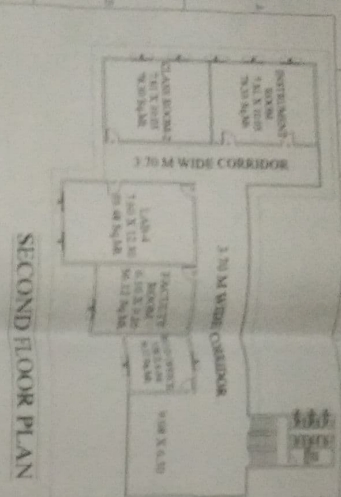
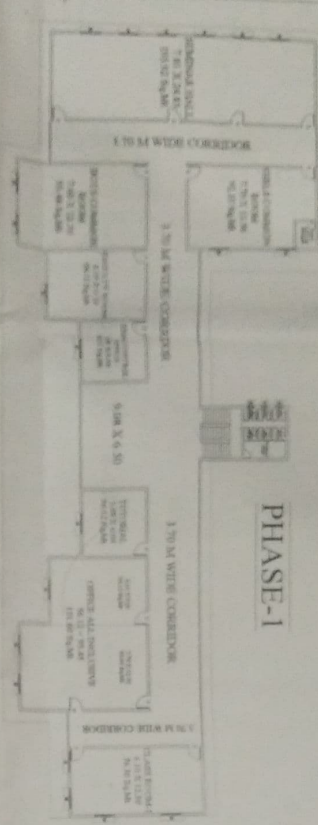


PHASE-2

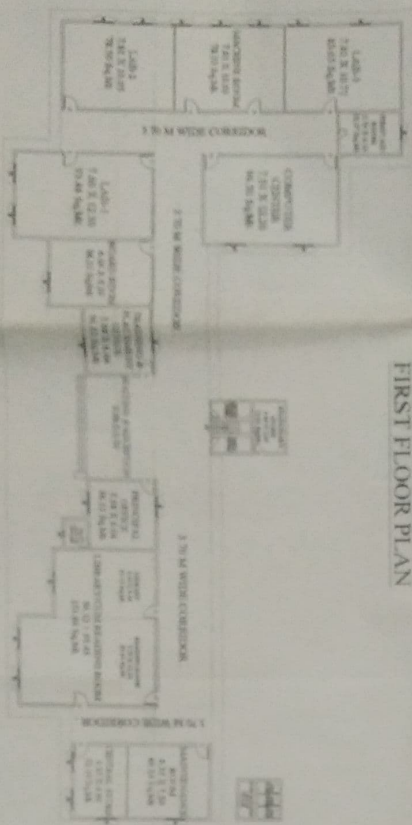


SECOND FLOOR PLAN

PHASE-1



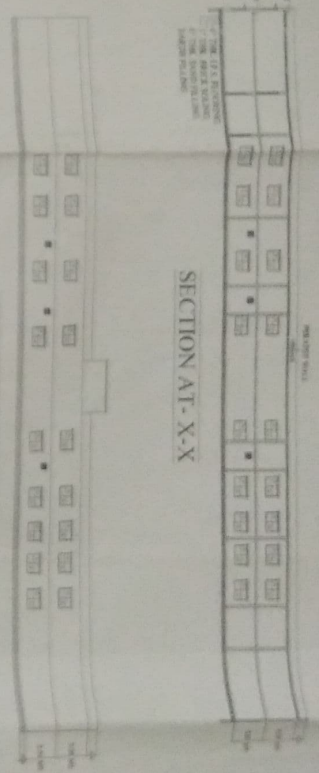
FIRST FLOOR PLAN



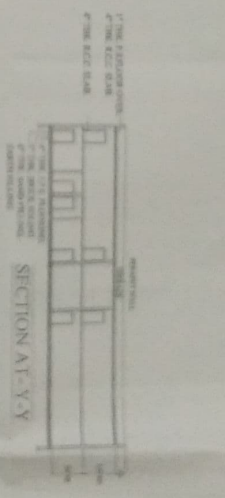
GROUND FLOOR PLAN

PROPOSED COMPLETE BUILDING PLAN, BABA VISHWANATH COLLEGE OF PHARMACY, LITPARABAD, BAGCHULLI TEHSIL - BIKANPUR, DISTT - AYODHYA, GATA NO. 1236 (242, 1240A, 1244, 1245) & Measuring land 2.004 Acres. UNDER MANAGED BY - BABA VISHWANATH SHIVPHOOL SIKHSIAN SEWA SANSTHAN, TEHSIL - BIKANPUR, DISTT - AYODHYA (UP).

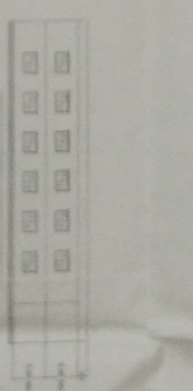
SECTION AT-X-X



FRONT ELEVATION



SECTION AT-Y-Y



SIDE ELEVATION

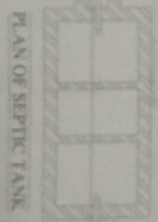
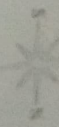


Table containing project specifications, materials list, and other technical details. Includes columns for 'S.No.', 'Description', 'Quantity', and 'Unit'.



SCALE 1:200
SHEET NO. 1/2