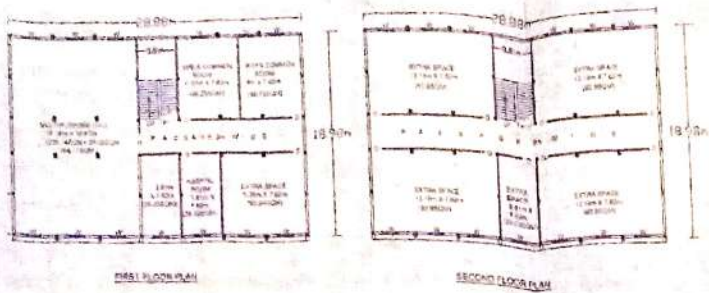
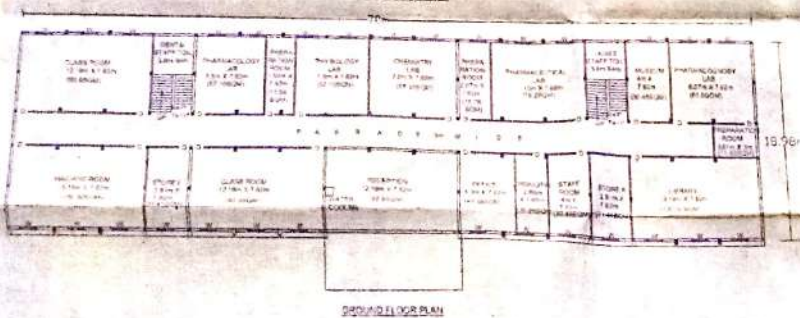
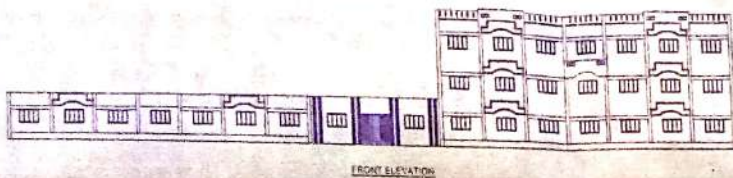
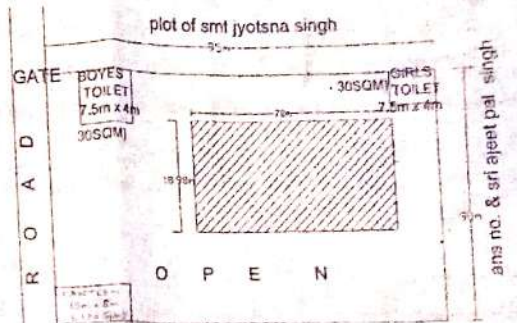


**BUILDING PLAN FOR D PHARMA COURSE AT RAI KRISHNA PAL SINGH MAHAVIDYALAYA
AT PLOT NO 387, BIRAPUR, TEHSIL -RANIGANJ, DISTT-PRATAPGARH
(MANAGER - SMT JYOTSANA SINGH WOSRI SANJAY SINGH)**

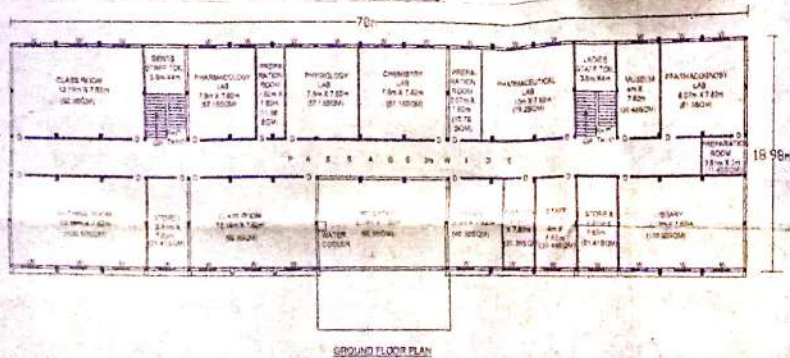
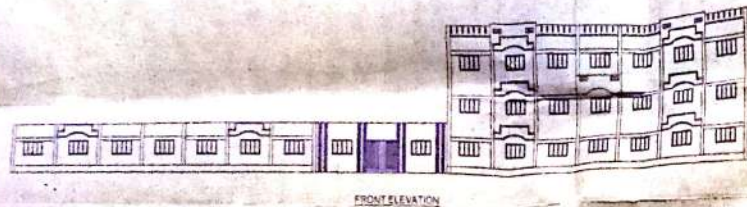
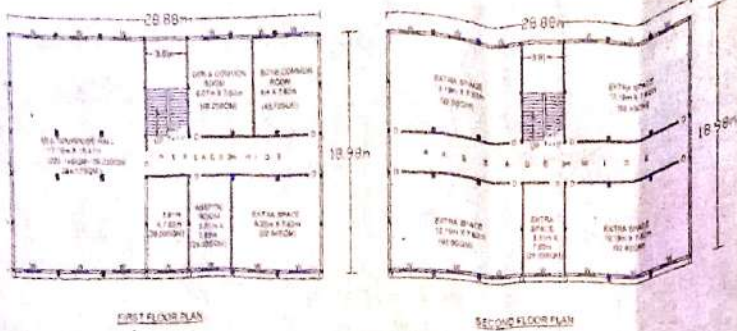


AREA DETAIL		DIRECTION
PLOT AREA	= 8550.00SQM	
COV. AREA GF	= 1328.80SQM	
COV. AREA FF	= 548.14SQM	
COV. AREA SF	= 548.14SQM	DOOR / WINDOW D= 3'-0" X 8'-0" W= 6'-0" X 5'-0"
TOTAL COV. AREA	= 2424.88SQM	
OPEN AREA	= 6125.12SQM	

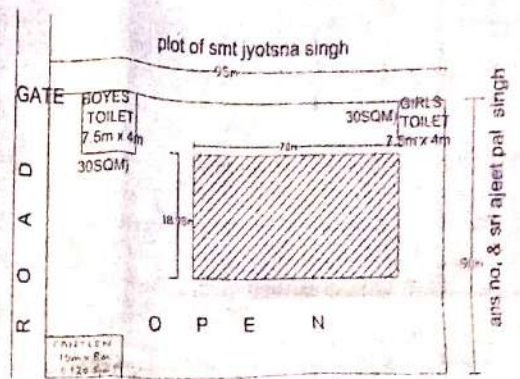


SANJAY SINGH
 B.E. CIVIL
 Chartered Engineer
 No. M-157783-8
 A.C. - Worked Value

BUILDING PLAN FOR D PHARMA COURSE AT RAI KRISHNA PAL SINGH MAHAVIDYALAYA
AT PLOT NO. 387, BIRAPUR, TEHSIL -RANIGANJ, DISTT-PRATAPGARH
(MANAGER:- SMT JYOTSANA SINGH WOSRI SANJAY SINGH)



AREA DETAIL		DIRECTION
PLOT AREA	= 8550 00SQM	
COV. AREA GF	= 1328 60SQM	
COV. AREA FF	= 548 14SQM	
COV. AREA SF	= 548 14SQM	DOOR / WINDOW
TOTAL COV. AREA	= 2424 88SQM	D= 3'-6" X 8'-0"
OPEN AREA	= 6125 12SQM	W= 6'-0" X 5'-0"



SANJAY SINGH
B.E. CIV. ENGR
Chartered Engineer
No. M-137798-6
A. proved Valuer